

Abell House, London, SW1P



£1,850,000

Exquisite Living in a prestigious development!

This striking two-bedroom apartment embodies luxury living complete with a private balcony.

Revel in the opulence of the development's 24-hour concierge, gym, swimming pool, lush gardens, and versatile meeting rooms.

With 1229 sq ft of internal space, the apartment boasts an inviting open-plan reception area that extends seamlessly to a generous balcony, offering picturesque vistas.

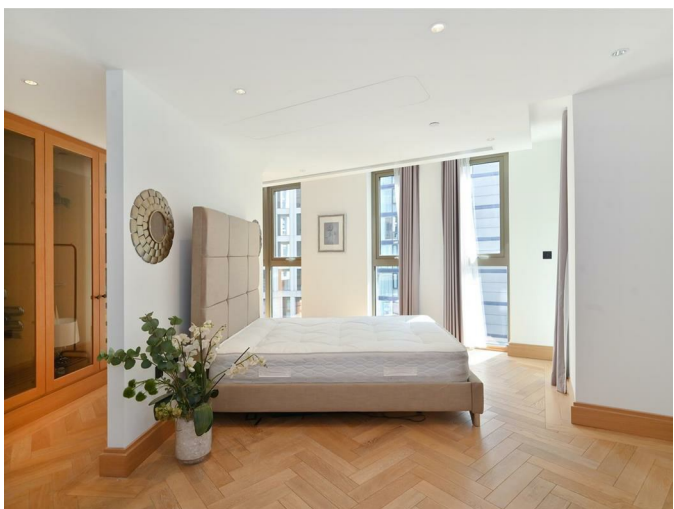
A top-of-the-line kitchen, two spacious double bedrooms with ample storage, and two beautifully finished bathrooms amplify its allure. Noteworthy features include comfort cooling and elegant wooden flooring.

Nestled in Westminster's prestigious Abell & Cleland development, renowned for its award-winning architectural design and proximity to the Houses of Parliament, this property stands out as an exceptional residence.

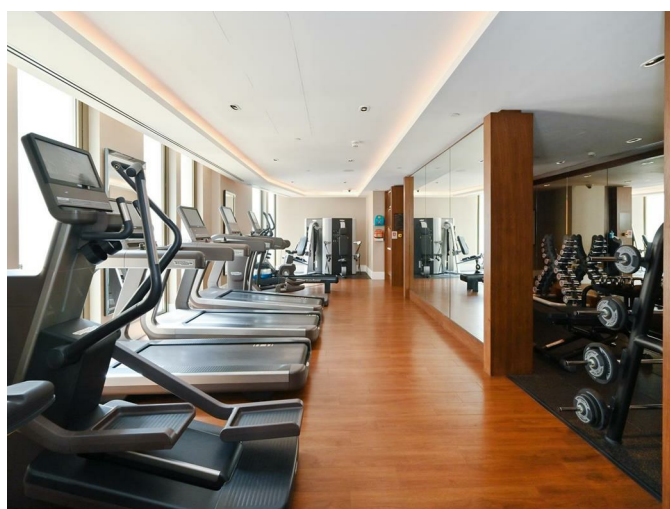
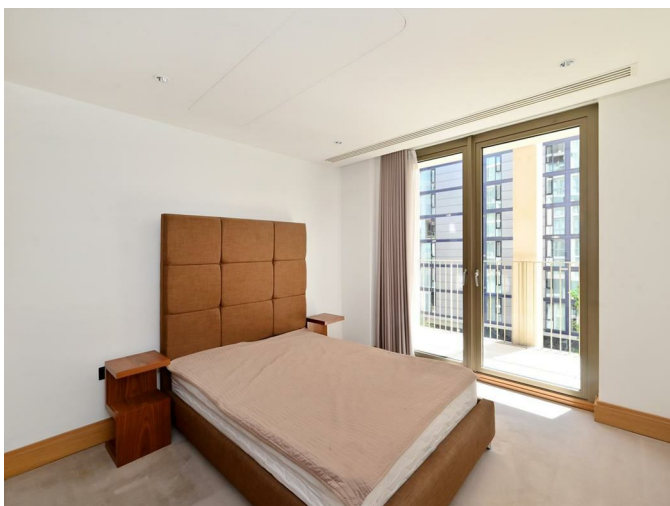
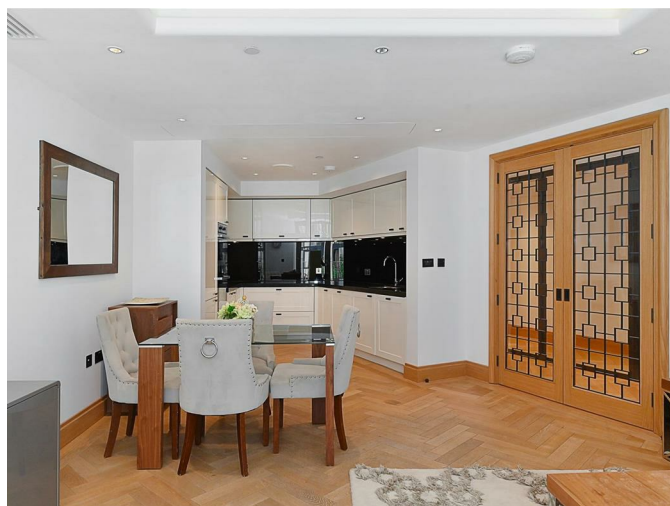
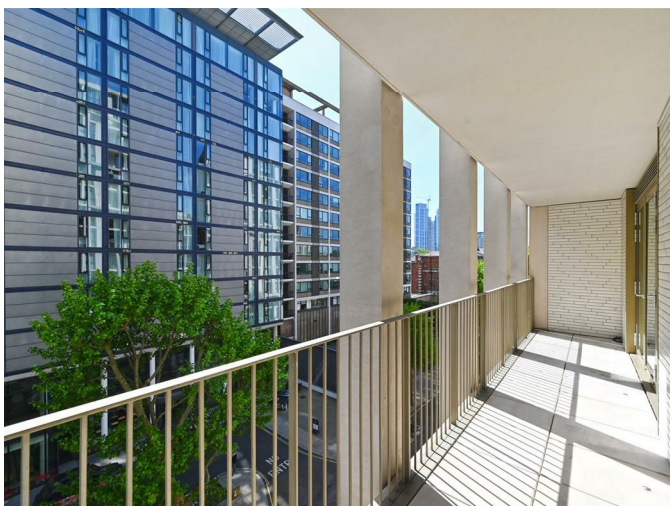
Situated in a charming locale south of St James Park and east of Victoria, this area maintains an inviting village-like ambiance while being in close proximity to iconic landmarks, amenities, celebrated restaurants, and boutique shops. Green Park and St James's Park are easily accessible, enriching the appeal of this prime location.

- Comfort cooling
- Private Balcony
- Residents Gym & Pool
- 24 hours concierge
- Landscaped Gardens
- Close to parks & recreation
- Close to transport links
- Tenure: 999 years from new
- Ground Rent: £750.00
- Service Charge: £13,296.00

REQUEST A VIEWING
+44 (0)20 3019 6150



REQUEST A VIEWING
+44 (0)20 3019 6150



REQUEST A VIEWING
+44 (0)20 3019 6150

