

**Schooner Road, London, E16 2PW**

**£2,600 Per Month**

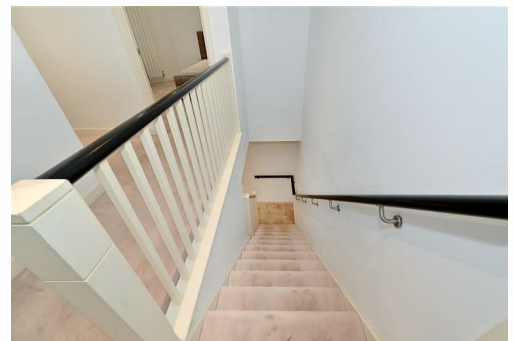


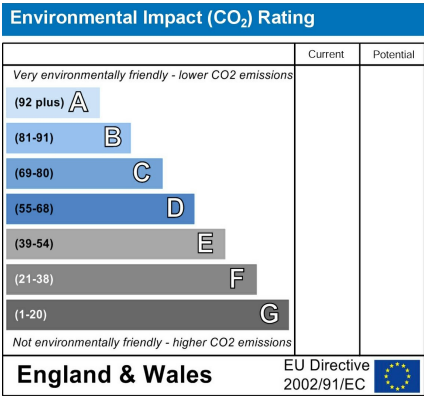
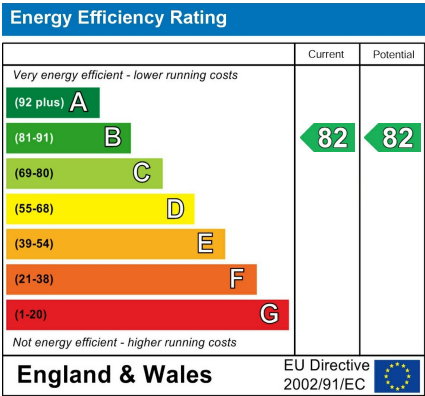
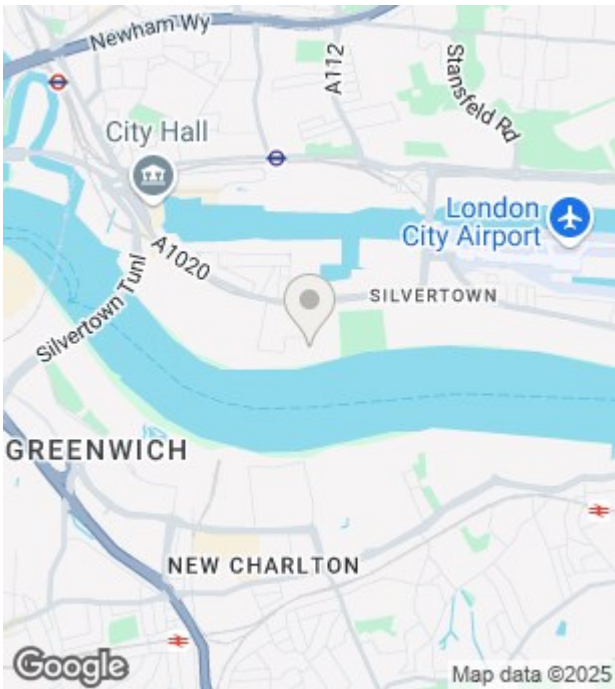
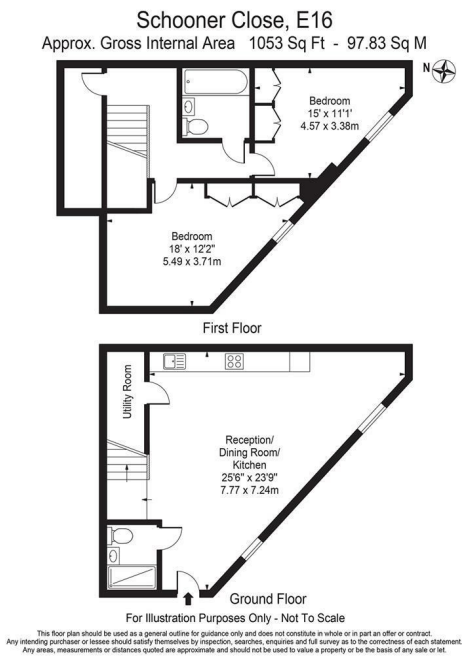
This two-bedroom, two-bathroom duplex apartment consists of large open-plan living, integrated kitchen, floor-to-ceiling windows offer an abundance of natural light, two double bedrooms with fitted wardrobes and wooden flooring.

Royal Wharf is located between Pontoon Dock and Custom House DLR stations with speedy access to Canary Wharf in 12 minutes and London City Airport in 4 minutes. The development benefits from landscaped communal gardens and 24-hour concierge and security service. Also, the Royal Wharf Thames Clipper stop is now fully operational.

Residents have access to their own Leisure Facilities. The Clubhouse has a 25-metre indoor pool, alongside a hydrotherapy spa, sauna and treatment rooms.

- Two Bedroom
- Duplex Apartment
- Integrated Kitchen
- Close to DLR
- Leisure Facilities
- Two Bathroom
- Large Living Space
- Fitted Wardrobes
- Shops and Amenities Close





Unit 10 Paddington Works 8 Hermitage Street, London, W2 1BE  
Tel: +44(O)20 3019 6151 Email: [lettings@grange.london](mailto:lettings@grange.london)