

Phillimore Court, Kensington High Street, London



£1,195,000

A stylish and well-proportioned two-bedroom, one-bathroom apartment in an elegant Kensington mansion block.

Nestled in the vibrant heart of Kensington High Street, this delightful property offers a perfect blend of comfort and convenience.

The inviting reception room of this bright apartment serves as a welcoming space for entertaining guests or enjoying quiet evenings at home. Spanning 796 square feet, the residence features two well-proportioned bedrooms and a modern family bathroom.

Residents will appreciate the added benefits of a lift, a dedicated day porter, and lovely communal terrace garden.

Perfectly positioned in the heart of Kensington, this property is just moments from Holland Park and Kensington Gardens, set along the renowned Kensington High Street.

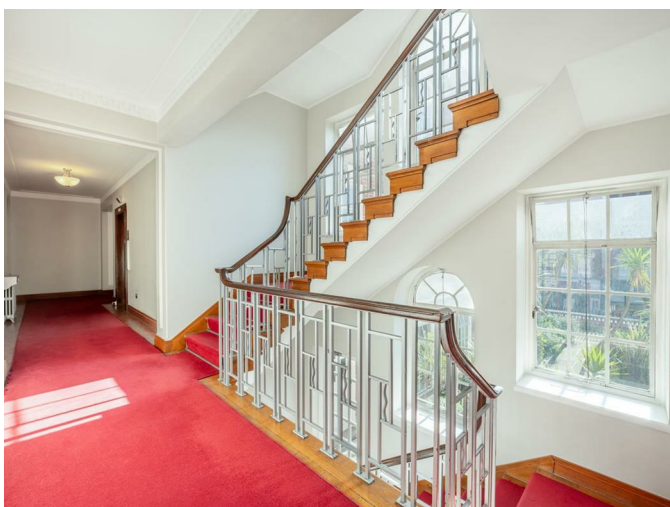
A vibrant hub in West London, Kensington High Street is celebrated for its upscale boutiques, charming cafés, and excellent transport links, including the District and Circle line from nearby High Street Kensington Station.

- Prime Kensington Location
- 2 bedroom apartment
- 2nd floor, 796 sq ft
- Private residents' terrace
- Day Porter
- Share of Freehold
- Close to shops, restaurants & tube
- Ground Rent: £100 pa
- Service Charge: £5,844.00 pa

REQUEST A VIEWING
+44 (0)20 3019 6150

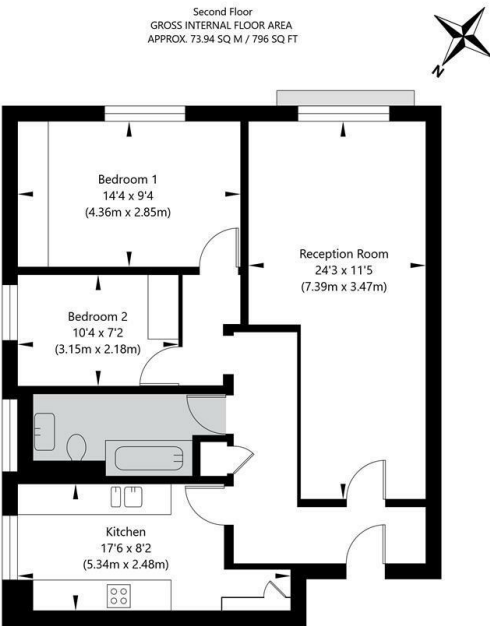


REQUEST A VIEWING
+44 (0)20 3019 6150



REQUEST A VIEWING
+44 (0)20 3019 6150

Phillimore Court, Kensington High Street W8 7DS



APPROXIMATE GROSS INTERNAL FLOOR AREA 73.94 SQ M / 796 SQ FT
THIS FLOOR PLAN IS FOR ILLUSTRATIVE PURPOSES ONLY AND
SHOULD BE USED FOR THIS PURPOSE BY PROSPECTIVE APPLICANTS AS ITS NOT TO SCALE.

