



Thomas Earle House, Kensington, London



£2,980,000

Nestled in the vibrant heart of London, this exquisite property on Warwick Lane offers a perfect blend of modern living and comfort. Spanning an impressive 1,904 square feet, this residence boasts three well-appointed bedrooms, each designed to provide a tranquil retreat. The three bathrooms are elegantly finished, ensuring convenience and privacy for all occupants.

Upon entering, you are welcomed into a spacious reception room that serves as the ideal space for both relaxation and entertaining. The contemporary design, completed in 2018, reflects the latest in architectural trends while maintaining a warm and inviting atmosphere.

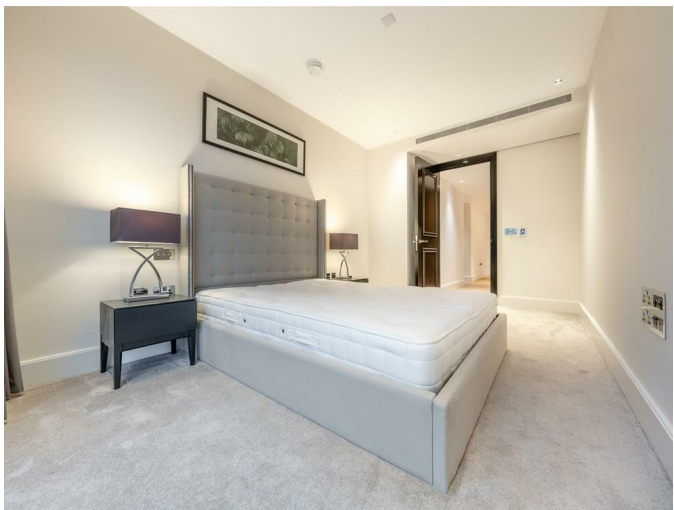
Concierge service is available 24/7, and residents have access to the swimming and vitality pools, a treatment room, a state-of-the-art gym with the very latest range of equipment, and a private cinema room. Private landscaped gardens featuring delightful water features are for the enjoyment of the residents.

This property is perfectly situated to take advantage of the myriad of amenities that London has to offer, from delightful cafes to cultural attractions, and a mere 8 minute walk to Kensington Olympia station.

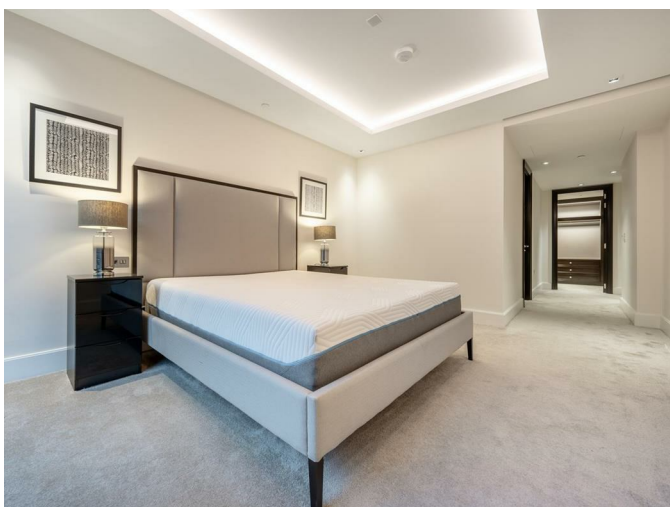
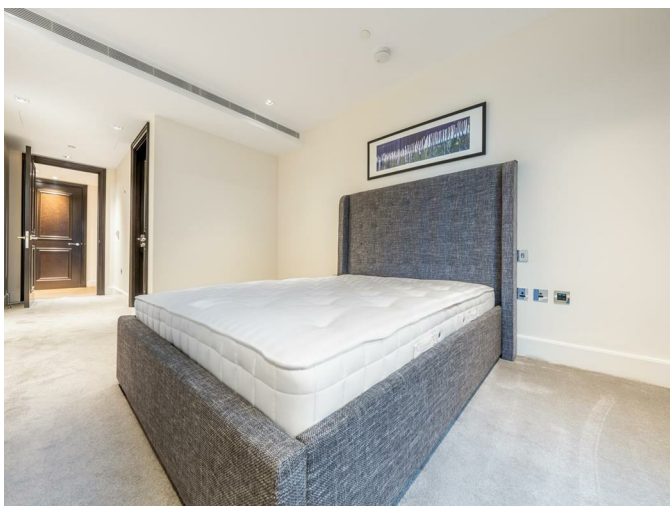
Whether you are seeking a family home or a stylish city base, this residence on Warwick Lane is sure to impress. With its generous living space and modern features, it presents an exceptional opportunity for those looking to embrace the London lifestyle.

- 24-hour concierge
- Residents cinema room
- Residents swimming pool, sauna, spa & steam room
- Outdoor landscaped gardens
- Close proximity to shops & eateries
- Easy access to transport links
- Service Charge: £15,000 pa
- Ground Rent: £1000 pa
- Tenure: 997 years

REQUEST A VIEWING
+44 (0)20 3019 6150



REQUEST A VIEWING
+44 (0)20 3019 6150

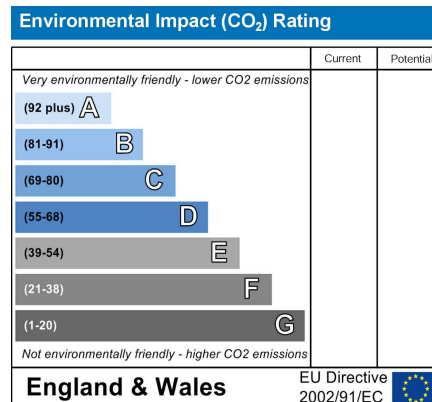
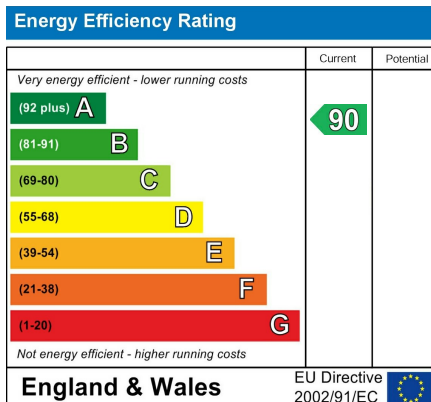


REQUEST A VIEWING
+44 (0)20 3019 6150

Thomas Earle House, Warwick lane, W14



APPROXIMATE GROSS INTERNAL FLOOR AREA 176.9 SQ M / 1904 SQ FT
THIS FLOOR PLAN IS FOR ILLUSTRATIVE PURPOSES ONLY AND
SHOULD BE USED FOR THIS PURPOSE BY PROSPECTIVE APPLICANTS AS ITS NOT TO SCALE.



GRANGE LONDON

4th Floor, One Kingdom Street, Paddington Central, London, W2 6BD
hello@grange.london +44(O)20 3019 6150