

Aldwych Chambers, Essex Street, London

 4
  3
  1
  75

£4,750,000

LARGE PENTHOUSE LIVING NEAR THE SAVOY!

A truly remarkable penthouse home on historic Essex Street, just a short stroll from The Strand, Covent Garden and Savoy hotel, situated on a tranquil lane near the River Thames.

Aldwych Chambers is a modern building but offers a unique glimpse into the past, located close to one of the last remnants of the ancient city wall that once surrounded London.

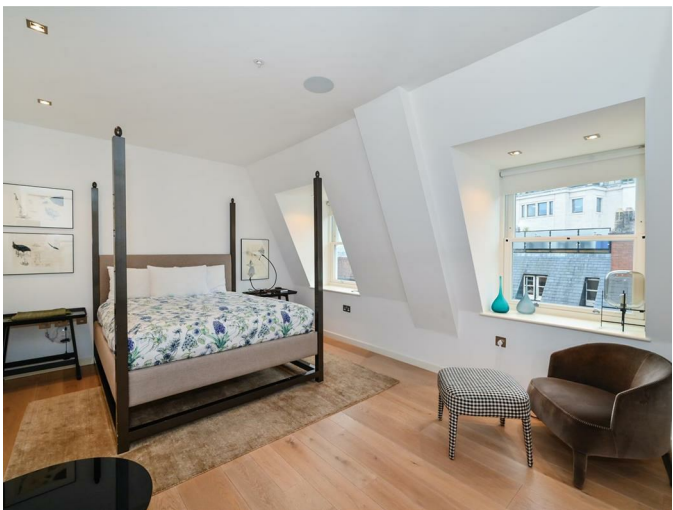
This spacious penthouse apartment boasts concierge, direct lift access, modern decor, a high specification and luxurious living with 4 bedrooms, 3 bathrooms, WC and large reception / dining & kitchen area spread over two floors.

One of its most impressive features is a spacious rooftop terrace which offers spectacular London skyline views and is accessed via the centerpiece glass staircase from the upper level.

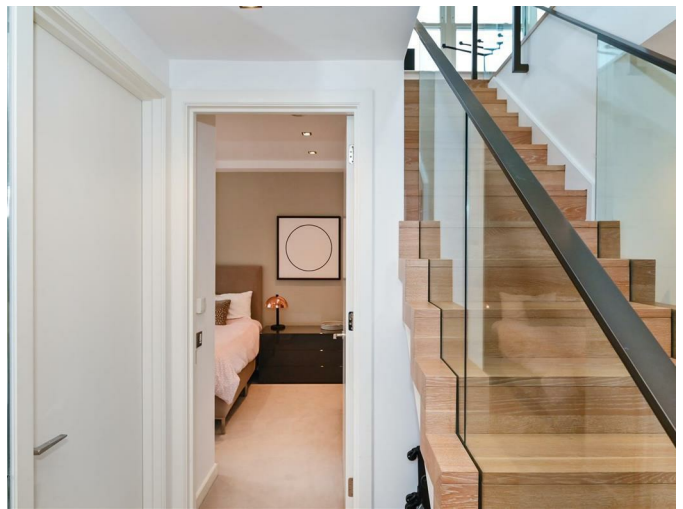
Surrounded by the picturesque River Thames, Covent Garden, and the stunning Royal Courts of Justice, Aldwych Chambers enjoys easy access to an array of shops, bars, and restaurants. With the vibrant heart of Covent Garden and Theatreland within walking distance, this home is also well-connected to various transport options, including Temple Station (Circle & District Lines, 0.1 miles), City Thameslink (Thameslink, 0.4 miles), riverboat services, and multiple bus routes.

- Duplex penthouse – over 2000 sq ft internal
- Private rooftop terrace
- Light filled apartment with direct lift access
- Walk in wardrobe in principal bedroom
- Modern kitchen with captivating views
- Close proximity to main transport links
- Concierge & residents cinema room
- Ground rent: £1,800
- Service charge: £17,000
- Tenure: 991 years

REQUEST A VIEWING
+44 (0)20 3019 6150



REQUEST A VIEWING
+44 (0)20 3019 6150



REQUEST A VIEWING
+44 (0)20 3019 6150

Aldwych Chambers
 Approx. Total Internal Area 2124 Sq Ft - 197.33 Sq M
 (Including Restricted Height Area)
 Approx. Gross Internal Area 2104 Sq Ft - 195.47 Sq M
 (Excluding Restricted Height Area)



For Illustration Purposes Only - Not To Scale
 This floor plan should be used as a general outline for guidance only and does not constitute in whole or in part an offer or contract.
 Any intending purchaser or lessee should satisfy themselves by inspection, searches, enquiries and full survey as to the correctness of each statement.
 Any areas, measurements or distances quoted are approximate and should not be used to value a property or be the basis of any sale or let.

Energy Efficiency Rating		Current	Potential
Very energy efficient - lower running costs			
(92 plus) A			
(81-91) B			
(69-80) C		75	75
(55-68) D			
(39-54) E			
(21-38) F			
(1-20) G			
Not energy efficient - higher running costs			
England & Wales	EU Directive 2002/91/EC		

Environmental Impact (CO ₂) Rating		Current	Potential
Very environmentally friendly - lower CO ₂ emissions			
(92 plus) A			
(81-91) B			
(69-80) C			
(55-68) D			
(39-54) E			
(21-38) F			
(1-20) G			
Not environmentally friendly - higher CO ₂ emissions			
England & Wales	EU Directive 2002/91/EC		

