



Westmark Tower, London, W2, W2

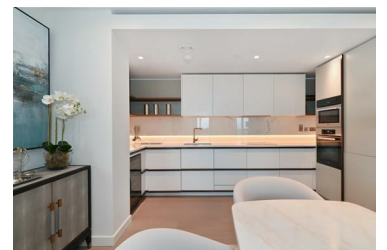
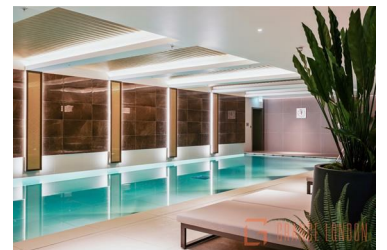
£12,000 Per Month



We're delighted to offer for rent, the most sought after type of 3 bedroom apartment in the West End Gate development. Located on the 27th floor this Westmark Tower apartment offers high spec Julia Palmer interior and panoramic views towards central London and Regents Park, a luxury specification and use of five star residents facilities

In Zone 1 London and moments from the prestigious neighbourhoods of Marylebone and Little Venice, West End Gate comprises a range of apartments situated around private landscaped gardens. Residents will enjoy first-class facilities including a 24 hour concierge, private cinema, residents dining, pool, gym & spa.

At 30 stories high, Westmark Tower is the flagship building within the development and offers dramatic views towards, Regents



- Beautiful Interior Designed Three Bedroom Apartment
- 24-Hour Concierge Service
- Swimming Pool & Jacuzzi
- Resident Lounge Area
- Study & Business Rooms
- Three Bathrooms
- Fully Equipped Gymnasium
- Sauna, Steam and Treatment Rooms
- Dining Room & Cinema
- Fantastic transport links