

FOR SALE LONG LEASEHOLD SINGLE GARAGE



GARAGE 1, YELVERTON LODGE, RICHMOND ROAD, TWICKENHAM TW1 2NW

On the instructions of the Joint Administrators of Sheen Lane Developments Limited

DESCRIPTION

The property comprises a single garage located in a block to the rear of Yelverton Lodge in St Margarets/Twickenham in the London Borough of Richmond.

Yelverton Lodge is situated fronting Richmond Road, opposite Marble Hill Park, in close proximity to Twickenham and Richmond.

Situated in a block of 12 garages of brick and blockwork construction underneath a pitched profile sheet roof, with up and over door.

TENURE

The property is held long leasehold for a term of 125 years from 7th July 2016 at a peppercorn ground rent.

Title Number TGL451725.

TERMS

The property is offered with vacant possession.

GUIDE PRICE

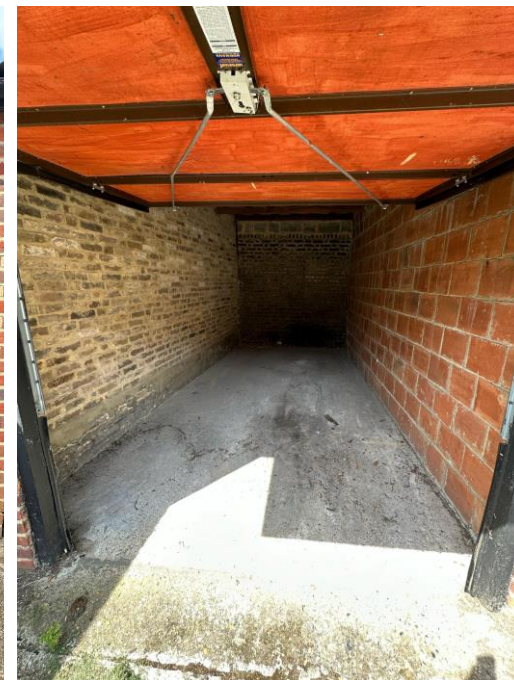
£40,000

LEGAL COSTS

Each party is to bear their own legal costs.

VAT

All prices are quoted exclusive of VAT.



CONTACTS:

For further information or to arrange a viewing please contact:

Anthony Hart

07513 822 654

ahart@hilcoglobaladvisors.co.uk

Will Garrood

07720 160 361

wgarrood@hilcoglobaladvisors.co.uk