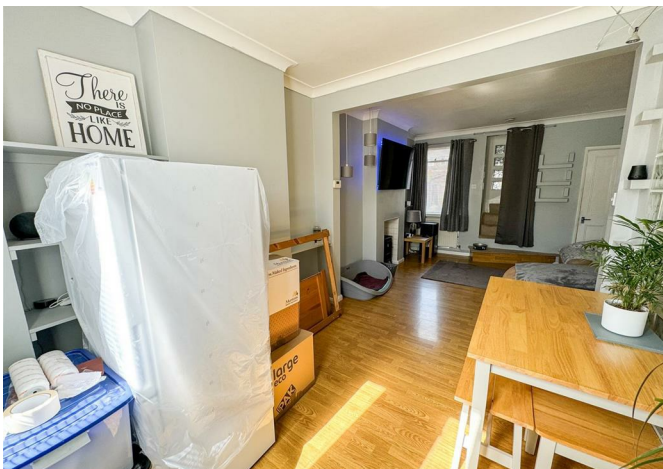




502 Bramford Road, Ipswich, IP1 5BE  
£950 Per month



502 Bramford Road, Ipswich, IP1 5BE

**£950 Per month**

An excellent example of a two bedroom end of terrace house in North West Ipswich available now.

The property consists of, entrance hall, living/dining room, galley kitchen with utility to rear. Upstairs you have a bathroom with separate shower and bath and two double bedrooms.

The property is fully double glazed and gas centrally heated with shared side access and a rear garden.

Call now to organise your viewing before its gone.

## Description



## Situation

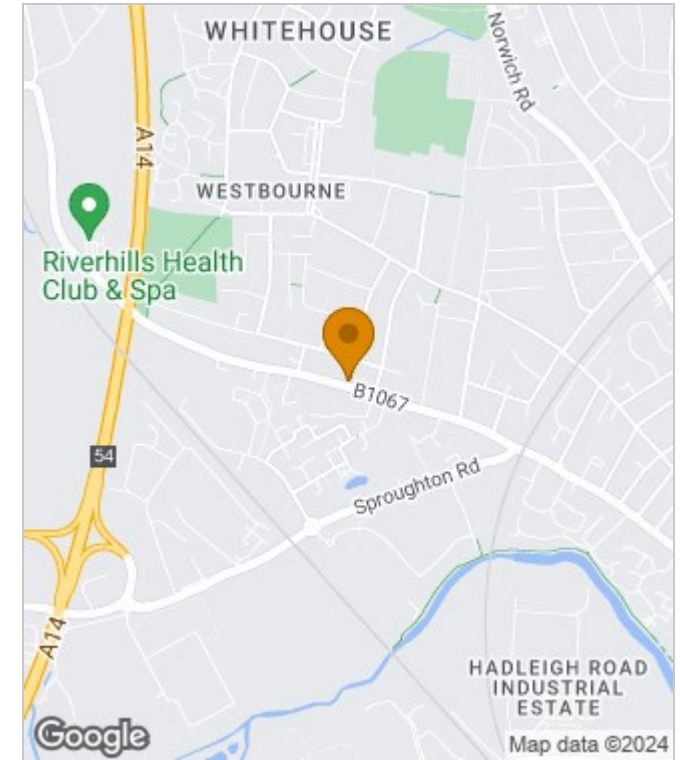


Unfurnished  
Council Tax Band: A  
Available: 26th July 2024

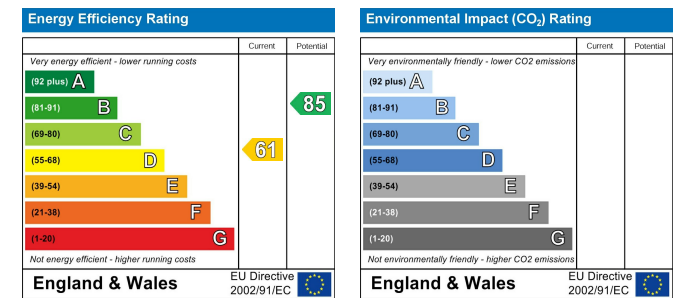
## Floor Plans



## Area Map



## Energy Performance Graph



These particulars, whilst believed to be accurate are set out as a general outline only for guidance and do not constitute any part of an offer or contract. Intending purchasers should not rely on them as statements of representation of fact, but must satisfy themselves by inspection or otherwise as to their accuracy. No person in this firm's employment has the authority to make or give any representation or warranty in respect of the property.