

E&M
PROPERTY SOLUTIONS

31-39



Coming soon

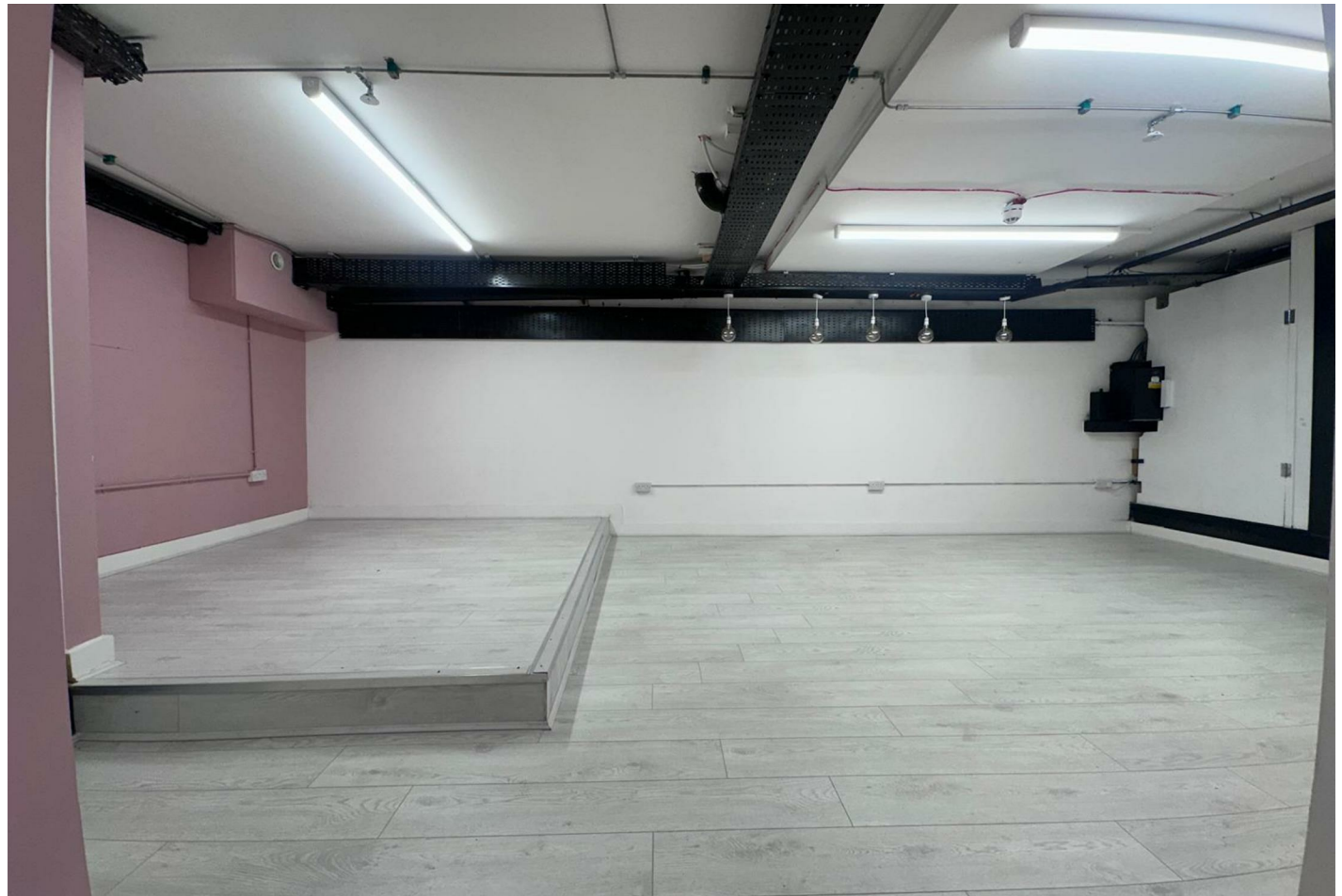
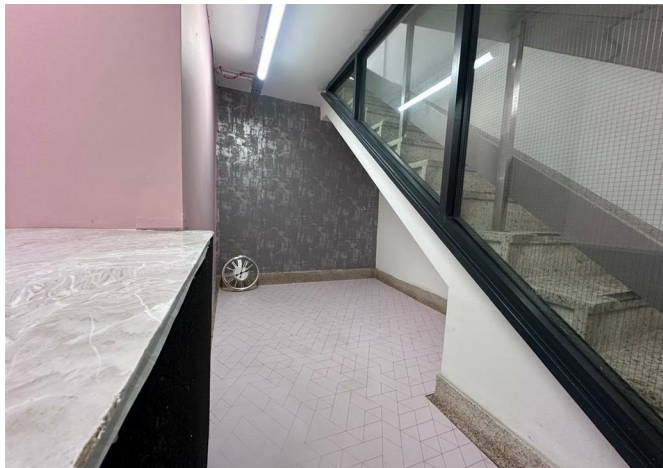


HALIFAX HOUSE
Apartments 1 - 4

TO ME
TO YOU
SUPPORT
CARE AGENCY

TO ME
TO YOU
SUPPORT
CARE AGENCY
est 2017

Unit 5 27-29 Manchester Road, Burnley, Lancashire, BB11 1HG
£450 Per month



Unit 5 27-29 Manchester Road, Burnley, Lancashire, BB11 1HG

£450 Per month

Prime Commercial Unit To Let – Manchester Road, Town Centre Location

Now available – an exciting opportunity to rent a versatile non-domestic commercial unit ideally located on Manchester Road. This modern space offers a stylish and practical setup that would suit a variety of business types including beauty salons, training centres, studios, offices, therapy practices and more.

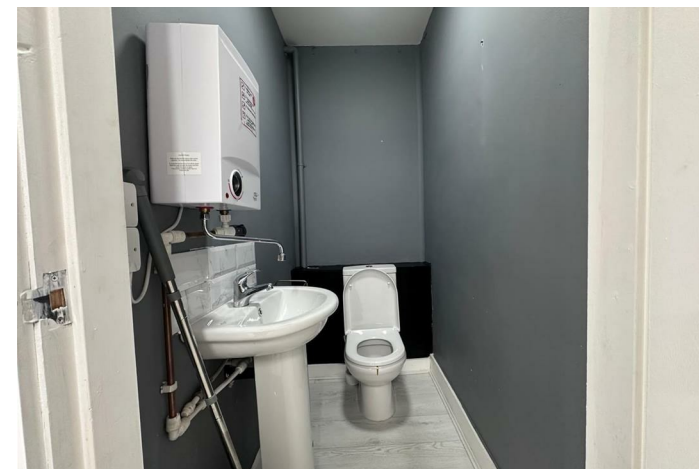
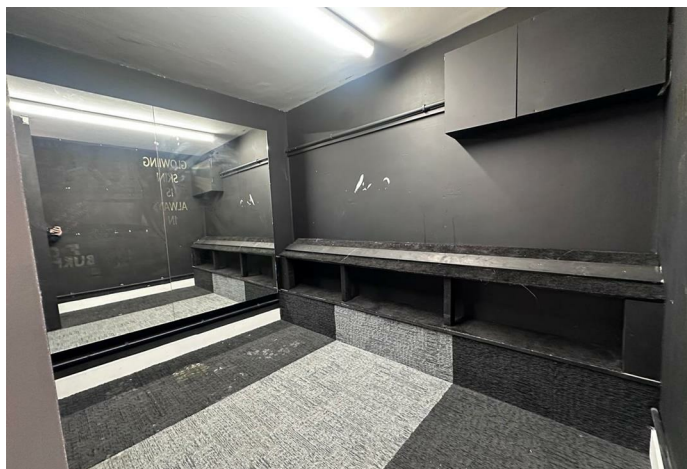
Property Features:

- Front Desk Area: As you enter the unit via the ground floor entrance, you are greeted by a welcoming front desk/reception area, perfect for client check-ins and first impressions.
- Electric Heating throughout the unit for year-round comfort and efficiency.
- Spacious Open-Plan Main Room: Modern laminate flooring and bright lighting make this room adaptable for a variety of uses—from classes and consultations to retail and events.
- Separate Private Room: Ideal for one-on-one meetings, treatment sessions, or additional workspace.
- Storage Cupboard: Convenient built-in storage area to keep the main space clutter-free.
- Modern WC Facilities: Clean and neutral with basin, toilet, and hot water heater.

Description



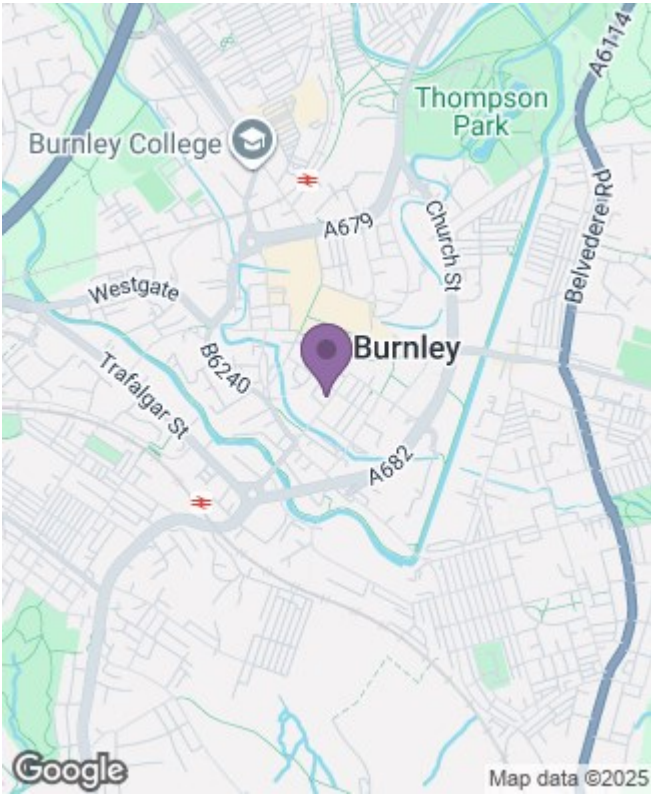
Situation



Unfurnished
Council Tax Band:
Available: 1st August 2025

Floor Plans

Area Map



Energy Performance Graph

