



164 Leyland Road, Burnley, BB11 3DS
£950 Per month



164 Leyland Road, Burnley, BB11 3DS

£950 Per month

4 Bedroom Semi-Detached House To Let – Great Location!

A well-presented 4 bedroom semi-detached home, ideally located just a short walk from Thompson Park, local amenities, and the town Centre.

This spacious property offers a bright and airy lounge, a modern kitchen diner, and a convenient ground floor WC. Upstairs, you'll find a family bathroom and four good-sized bedrooms. Outside, there's a private rear garden perfect for relaxing, plus a driveway providing off-road parking for two cars.

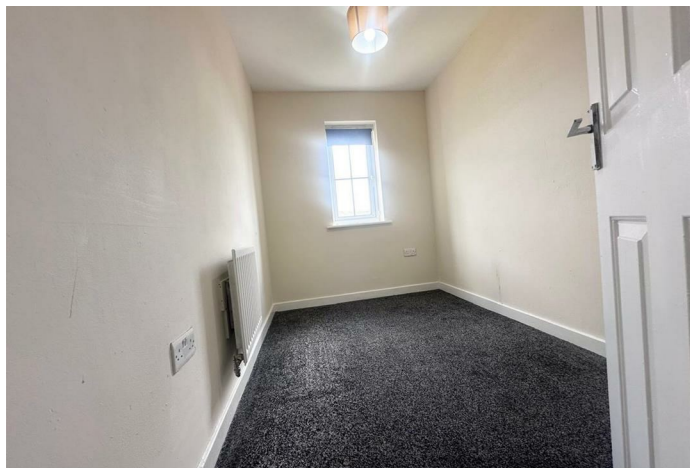
A fantastic family home in a great location – early viewing is highly recommended!

Contact us today to arrange a viewing!

Description



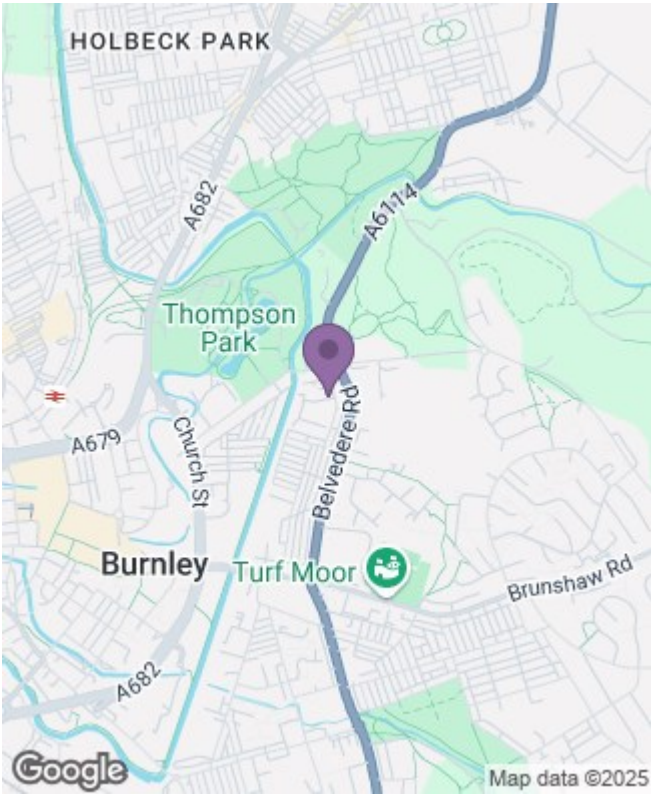
Situation



Unfurnished
Council Tax Band: C
Available:

Floor Plans

Area Map



Energy Performance Graph

