

[Becket Close, Woodford Green]

Asking Price of £720,000

Calibre

Helping families and individuals find
extraordinary homes they can call their own.

PROPERTY INFO

New to the market since its development, this four-bedroom detached home in Woodford Green is now available for its second ownership.

The property is arranged over three floors and includes an open-plan kitchen and dining area on the ground floor, leading to a spacious living room with four Velux windows and double doors opening onto a southeast-facing garden. A ground floor WC completes this level.

The first floor comprises a family bathroom and two double bedrooms, each with an en-suite shower room.

On the second floor, there is a further double bedroom with Velux windows and a fourth bedroom, suitable as a home office or guest room.

The property also benefits from allocated parking for two cars.

FEATURES:

- Detached Freehold Home
- Spacious Living Area boasting four Velux windows
- Rooftop Solar Panels
- Four Bedrooms
- Bathroom, Plus Two En-suite Shower Rooms
- Private Development with Communal Playground and Grounds
- Direct Access to Adjacent Claybury Park



TENURE:

Freehold

EPC Rating: B

Council Tax Band: E

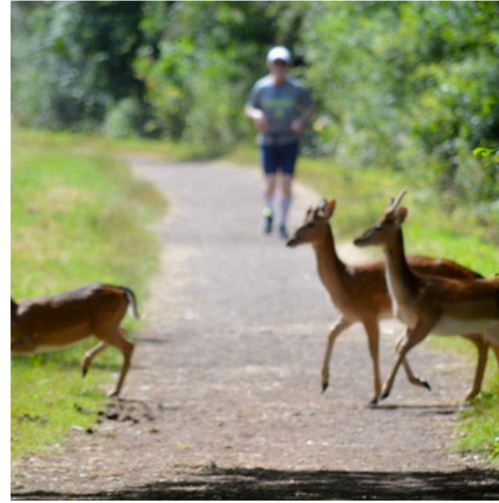
Annual Service Charge: £720.85



LOCATION; Woodford Green, IG8

Located on the edge of Epping Forest, Woodford Green in Essex is a sought-after area offering a balance of tranquil green spaces and excellent local amenities. The area boasts a range of independent shops, cafes, and restaurants, alongside well-regarded schools and convenient transport links, including access to the Central Line for easy commutes into London.

With its blend of suburban charm and practicality, Woodford Green appeals to families, professionals, and those seeking a peaceful yet connected lifestyle.



AMENITIES, SCHOOLS & TRANSPORT



Woodford Underground Station

1.4 miles



Roding Primary School

0.4 miles



Glade Primary School

0.6 miles



Stradbroke

1.1 miles



Caterham High School

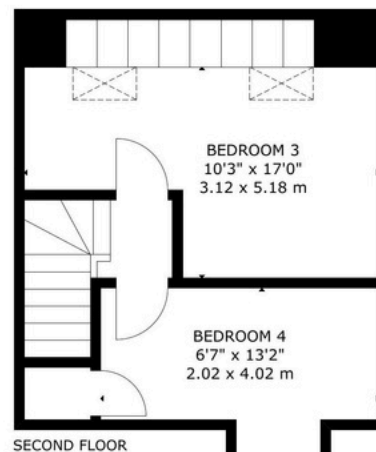
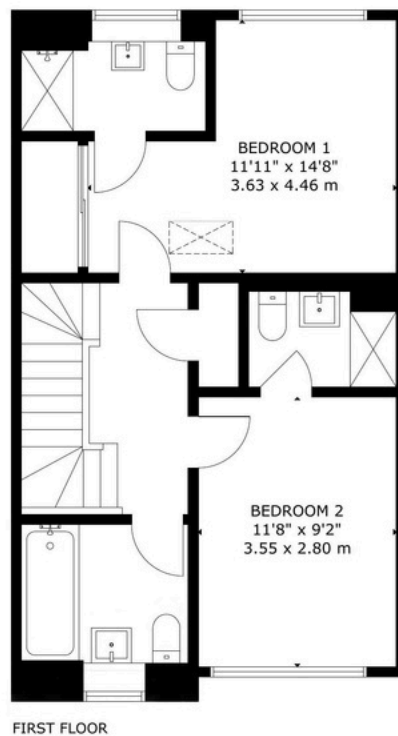
0.9 miles





BECKETT CLOSE IG8
GROSS INTERNAL AREA
APPROX TOTAL: 133.sq.m - 1434.sq.ft

C.



This plan is for layout guidance only. Not drawn to scale unless stated. Whilst every attempt has been made to ensure the accuracy of this floor plan measurements of doors, windows, rooms, Sq footage & sq metres are approximate. For Identification Purposes only. The actual property will vary. Price on application for a 180 day Licence to use this Plan ©07012025. Not to scale. Floorplan, Photography, Virtual Tours, Inventory, Video & EPC's by www.steelondon.co.uk email: mark@steelondon.co.uk

FLOORPLAN

To arrange a viewing of this property, please get in touch with us. Viewings are strictly by appointment only.

T: 020 7183 1060

E: hello@calibrestates.co.uk

Calibre.