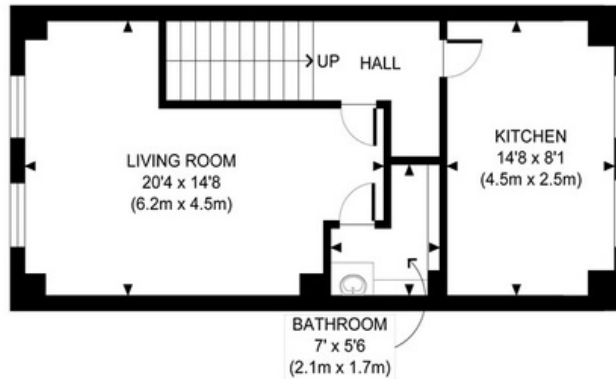


SECOND FLOOR  
 GROSS INTERNAL  
 FLOOR AREA 475 SQ FT



FIRST FLOOR  
 GROSS INTERNAL  
 FLOOR AREA 469 SQ FT



GROUND FLOOR  
 GROSS INTERNAL  
 FLOOR AREA 31 SQ FT

APPROX. GROSS INTERNAL FLOOR AREA 975 SQ FT / 91 SQM

Disclaimer: Floor plan measurements are approximate and are for illustrative purposes only. While we do not doubt the floor plan accuracy and completeness, you or your advisors should conduct a careful, independent investigation of the property in respect of monetary valuation

Hayfield Passage

date 31/03/22

photoplan 

## Asking price of £550,000

This split-level maisonette with allocated parking comprises a first-floor south-facing living room with w/c, a separate kitchen/dining area, an upstairs three-piece bathroom suite and two double bedrooms.

- Split-level maisonette
- 932 square foot
- Set behind a secure gated mews
- Allocated Parking
- New double-glazed windows at the rear
- Short walk to Stepney Green Underground

### Lease Information

- New 142-year lease
- £1,400.00 annual service charge
- £250.00 annual ground rent

Viewings by appointment only  
[hello@calibrestates.co.uk](mailto:hello@calibrestates.co.uk)  
020 7183 1060

**calibre.**




## Location & Transport

 Stepney Green Underground - 0.1 miles | 3 mins walk

 Whitechapel Elizabeth Line - 0.7 miles | 14 mins walk

 Limehouse DLR - 0.9 mile | 18 mins walk

 23 mins to Liverpool Street - Stepney Green Station (Stop G)

 20 mins to Bank Station - Stepney Green Station (Stop G)

 22 mins to Canary Wharf - Mile End Road (Stop L)

 39 mins walk to Canary Wharf

 36 mins walk to Liverpool Street

 41 mins walk to the City

10 minutes to Liverpool Street  
16 minutes to Bank  
19 minutes to Canary Wharf

**calibre.**





