

RX
LONDON

65 Chandos Place,
WC2





The Building

Description

The 2nd floor at 65 Chandos Place provides high quality fitted office accommodation ready for immediate occupation.

Benefitting from excellent natural light, the 2nd floor office includes open plan desking, client meeting rooms, private offices, kitchenette with breakout seating, comms room, shower and bicycle storage.

Term

Available by way of sublet or assignment for a term until November 2027 with a tenant option to break in November 2025.

Financials

Rent	£75.00 per sq ft
-------------	------------------

Business Rates	£31.57 per sq ft
-----------------------	------------------

Service Charge	£16.23 per sq ft
-----------------------	------------------

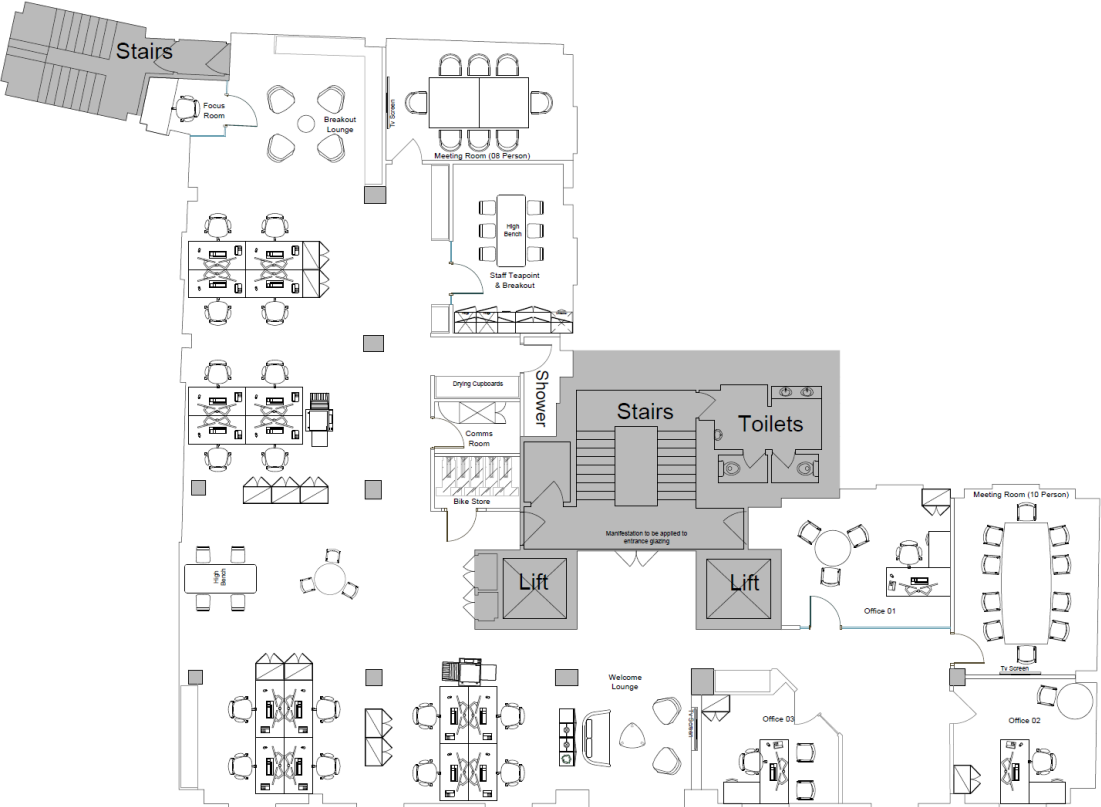
Location

65 Chandos Place is located in the heart of Covent Garden with views along Agar Street to Strand. Covent Garden stands as one of London's most renowned hubs for shopping and entertainment, offering a diverse range of facilities and cultural experiences. The property benefits from excellent connectivity with Covent Garden, Charing Cross and Leicester Square all within short walking distance.

Specification

- Fully fitted floor
- Ready for immediate occupation
- Excellent natural light
- Commissionaire
- 22 x desks, meeting rooms and private offices
- Kitchenette
- 2 x passenger lifts
- Showers and cycle parking

Floor Plan



Schedule of Area

Floor	sq ft	sq m	Status
2 nd	3,494	324.6	Available
Total	3,494	324.6	Available

Fly Through

<https://youtu.be/BeQDK0XwMvo?si=pjOKBa-VjDdZUCdl>





Progressive real estate.
On every level.

@rxlondon
info@rx.london
rx.london

Catherine Lloyd

+44(0)7795 445 833

Catherine.lloyd@rx.london

Helena Pryce

+44(0)7720 070 438

Helena.pryce@rx.london

Jack Moates

+44(0)7494 232 394

Jack.moates@rx.london

Important Notice

1. Particulars: These particulars are not an offer or contract, nor part of one. You should not rely on statements by RX London in the particulars or by word of mouth or in writing ("information") as being factually accurate about the property, its condition or its value. Neither RX London nor any joint agent has any authority to make any representations about the property, and accordingly any information given is entirely without responsibility on the part of the agents, seller(s) or lessor(s).

2. Photos etc: The photographs show only certain parts of the property as they appeared at the time they were taken. Areas, measurements and distances given are approximate only.

3. Regulations etc: Any reference to alterations to, or use of, any part of the property does not mean that any necessary planning, building regulations or other consent has been obtained. None of the services or appliances have been tested and no warranty is given or is to be implied that they are in working order. A buyer or lessee must find out by inspection or in other ways that these matters have been properly dealt with and that all information is correct.

4. VAT: The VAT position relating to the property may change without notice.

RX London is a limited liability partnership registered in England with registered number 12905015. Our registered office is as follows: RX London 1st Floor, 71 Broadwick Street, London, W1F 9PD