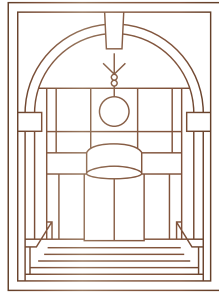






*more than you thought possible*





## ALMACK HOUSE

INTRODUCTION

RECEPTION

TERRACE

FACILITIES

FLOORPLANS

LOCATION

MAP

CONTACT

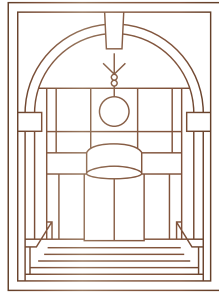


—

### THREE FLOORS UNDER OFFER, TWO FLOORS REMAINING

Located at the apex of Mayfair and St James's and with three floors already under offer, Almack House now has only two floors remaining to let. The modern and refurbished office space amidst some of the world's most renowned business names, retailers, galleries, auction houses, clubs and restaurants, are both available to present your business to the world's business community.





ALMACK HOUSE



INTRODUCTION

RECEPTION

TERRACE

FACILITIES

FLOORPLANS

LOCATION

MAP

CONTACT



**SEVENTH FLOOR**  
5,297 ST FT / 492 SQ M

**UNDER OFFER**

**FIFTH FLOOR**  
11,570 ST FT / 1075 SQ M

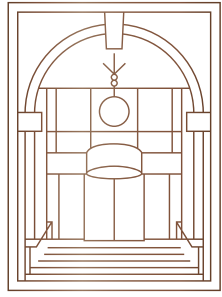
**FOURTH FLOOR**  
12,797 ST FT / 1189 SQ M

**GROUND FLOOR**  
8,767 ST FT / 814 SQ M

**UNDER OFFER**

**LOWER GROUND FLOOR**  
9,915 ST FT / 921 SQ M

**UNDER OFFER**



ALMACK HOUSE

INTRODUCTION

RECEPTION

TERRACE

FACILITIES

FLOORPLANS

LOCATION

MAP

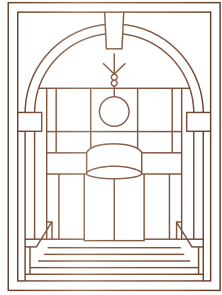
CONTACT



REDESIGNED, REFURBISHED AND  
ENLARGED RECEPTION







ALMACK HOUSE

INTRODUCTION

RECEPTION

TERRACE

FACILITIES

FLOORPLANS

LOCATION

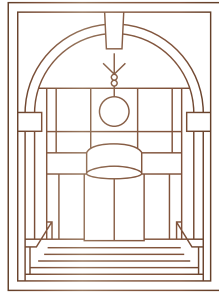
MAP

CONTACT

RECEPTION  
ARRIVAL FACILITIES







ALMACK HOUSE

INTRODUCTION

RECEPTION

TERRACE

FACILITIES

FLOORPLANS

LOCATION

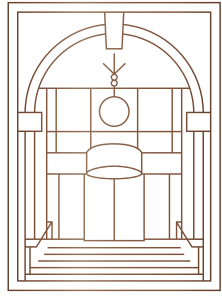
MAP

CONTACT



*more than just impressive interiors*





ALMACK HOUSE

INTRODUCTION

RECEPTION

TERRACE

FACILITIES

FLOORPLANS

LOCATION

MAP

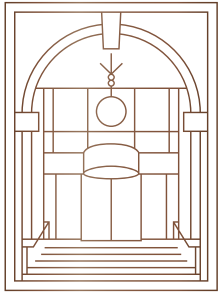
CONTACT



COMMUNAL TERRACE  
AND VIEWS







ALMACK HOUSE

INTRODUCTION

RECEPTION

TERRACE

FACILITIES

FLOORPLANS

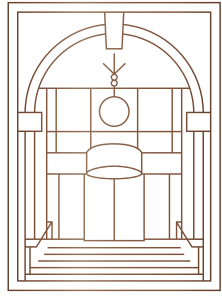
LOCATION

MAP

CONTACT







ALMACK HOUSE

INTRODUCTION

RECEPTION

TERRACE

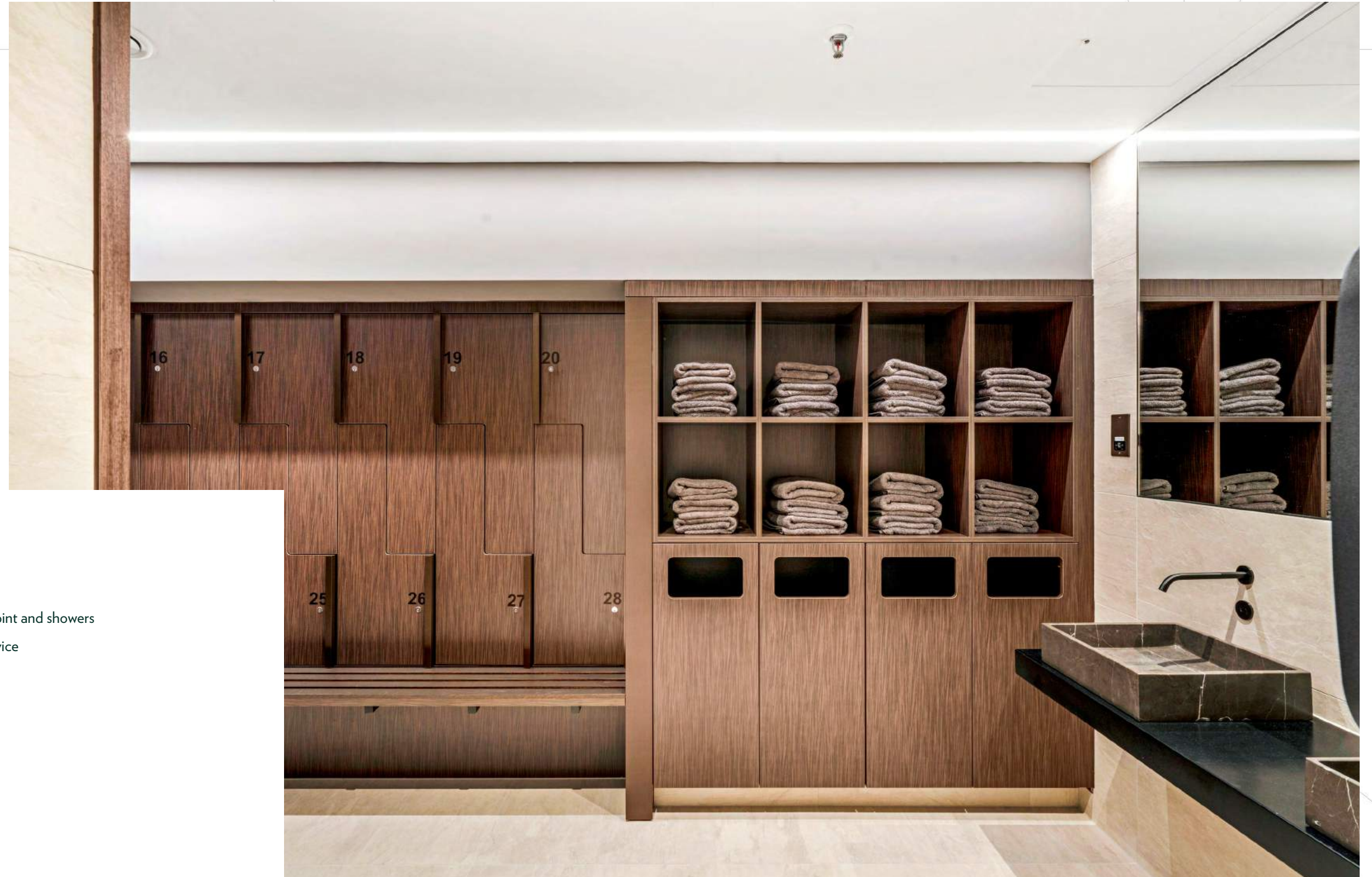
FACILITIES

FLOORPLANS

LOCATION

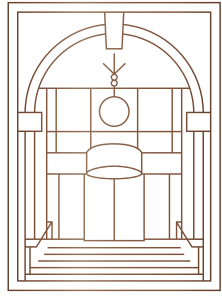
MAP

CONTACT



- New communal roof top terrace
- New enlarged and redesigned reception
- Four passenger lifts
- New end of trip facilities to include bike spaces, charging point and showers
- New wellness suite including fully-fitted gym with towel service
- Fully refurbished floors to CAT A standard
- New air conditioning and M&E services
- Newly refurbished common parts
- Car parking





ALMACK HOUSE

INTRODUCTION

RECEPTION

TERRACE

FACILITIES

FLOORPLANS

LOCATION

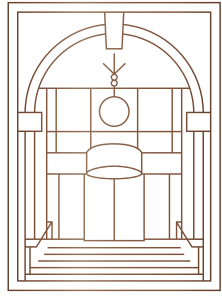
MAP

CONTACT

FIFTH  
FLOOR

*two floors of modern, refurbished space available*





ALMACK HOUSE

INTRODUCTION

RECEPTION

TERRACE

FACILITIES

FLOORPLANS

LOCATION

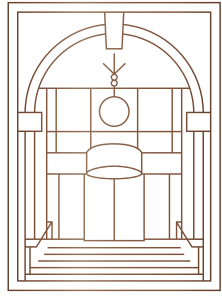
MAP

CONTACT

—  
FOURTH  
FLOOR







ALMACK HOUSE

INTRODUCTION

RECEPTION

TERRACE

FACILITIES

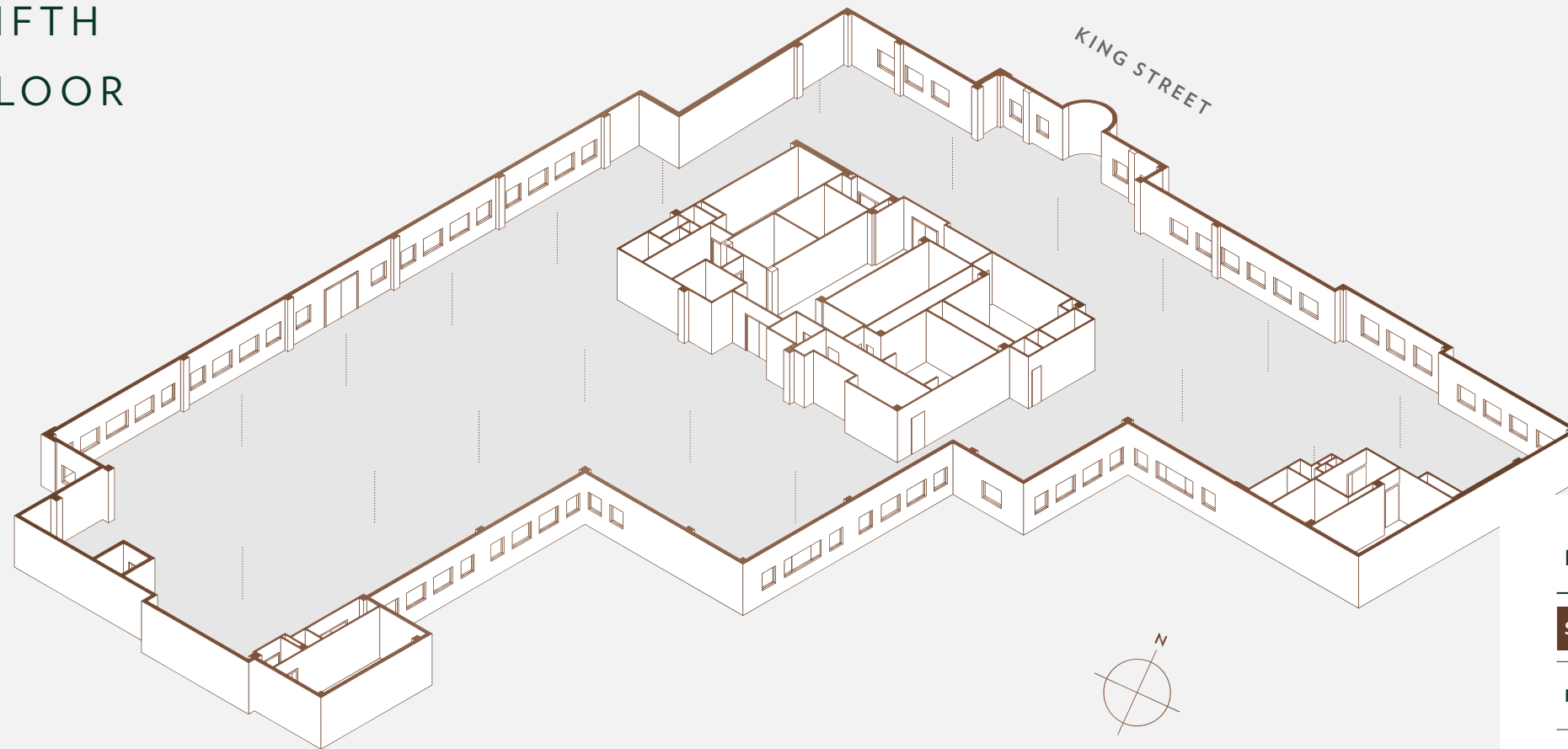
FLOORPLANS

LOCATION

MAP

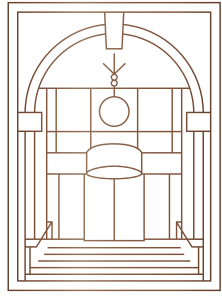
CONTACT

# FIFTH FLOOR



Floor		SQ FT	SQ M
SEVENTH	UNDER OFFER APRIL '24	5,297	492
FIFTH		11,570	1,075
FOURTH		12,797	1,189
GROUND	UNDER OFFER APRIL '24	8,767	814
LOWER GROUND	UNDER OFFER APRIL '24	9,915	921
<b>TOTAL</b>		<b>48,346</b>	<b>4,491</b>
<b>TOTAL CURRENTLY AVAILABLE</b>			
Fifth & Fourth Floors		24,367	2,264





ALMACK HOUSE

INTRODUCTION

RECEPTION

TERRACE

FACILITIES

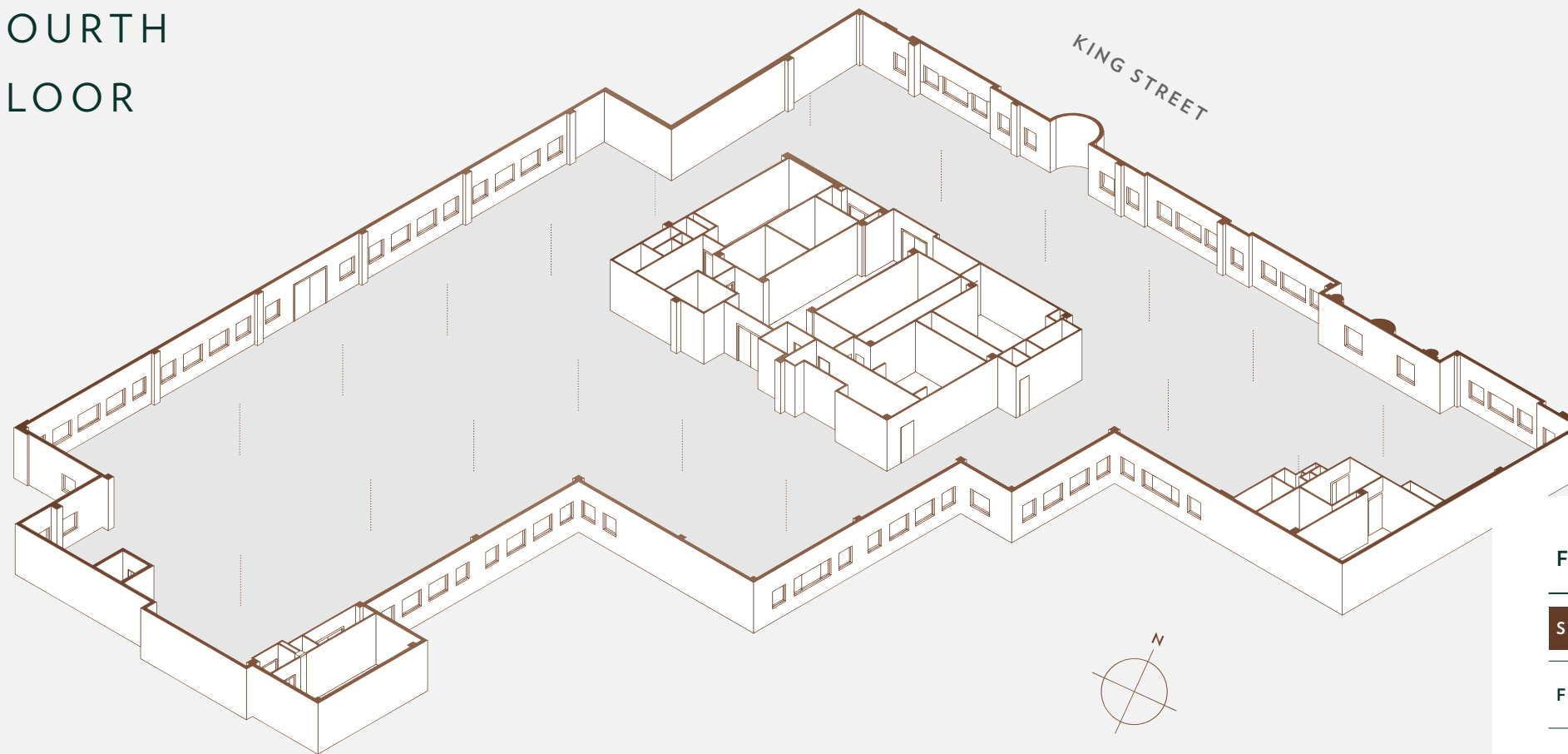
FLOORPLANS

LOCATION

MAP

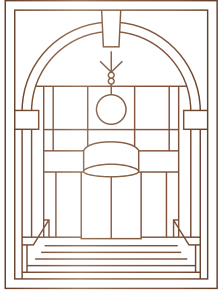
CONTACT

# FOURTH FLOOR



Floor		SQ FT	SQ M
SEVENTH	UNDER OFFER APRIL '24	5,297	492
FIFTH		11,570	1,075
FOURTH		12,797	1,189
GROUND	UNDER OFFER APRIL '24	8,767	814
LOWER GROUND	UNDER OFFER APRIL '24	9,915	921
<b>TOTAL</b>		<b>48,346</b>	<b>4,491</b>
<b>TOTAL CURRENTLY AVAILABLE</b>			
Fifth & Fourth Floors		24,367	2,264





ALMACK HOUSE

[INTRODUCTION](#)

[RECEPTION](#)

[TERRACE](#)

[FACILITIES](#)

[FLOORPLANS](#)

[LOCATION](#)

[MAP](#)

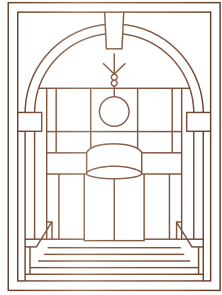
[CONTACT](#)



*more than antiques*

NEIGHBOUR WHITE CUBE GALLERY





ALMACK HOUSE

INTRODUCTION

RECEPTION

TERRACE

FACILITIES

FLOORPLANS

LOCATION

MAP

CONTACT



## A NEW AGE OF ST JAMES'S HAS BEGUN

More than the heritage of St James's Palace, The Ritz, The Reform Club and Fortnum and Mason, and the durable reputation of the burgeoning art scene, from classic to contemporary, the area of St James's is considered to be a dynamic and established business district.

The area's character is formed by business professionals alongside traditional London trades of tailors, vintners, shoemakers, milliners, art galleries, restaurants, clubs, auction houses and gunsmiths amid a central garden square and a Royal Park.

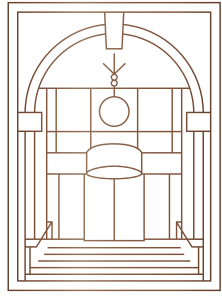
Almack House is part of this community and now offers the opportunity, to a few, to join their neighbours.

↑ White Cube Gallery (previous page)

← Berry Brothers wine merchants

↗ Dunhill, Luxury menswear





ALMACK HOUSE

INTRODUCTION

RECEPTION

TERRACE

FACILITIES

FLOORPLANS

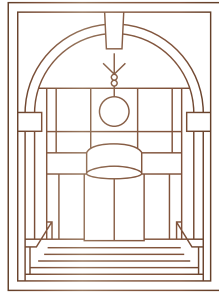
LOCATION

MAP

CONTACT







ALMACK HOUSE

INTRODUCTION

RECEPTION

TERRACE

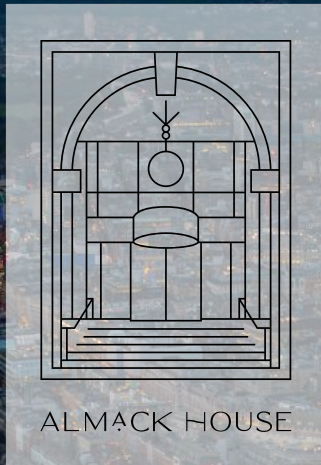
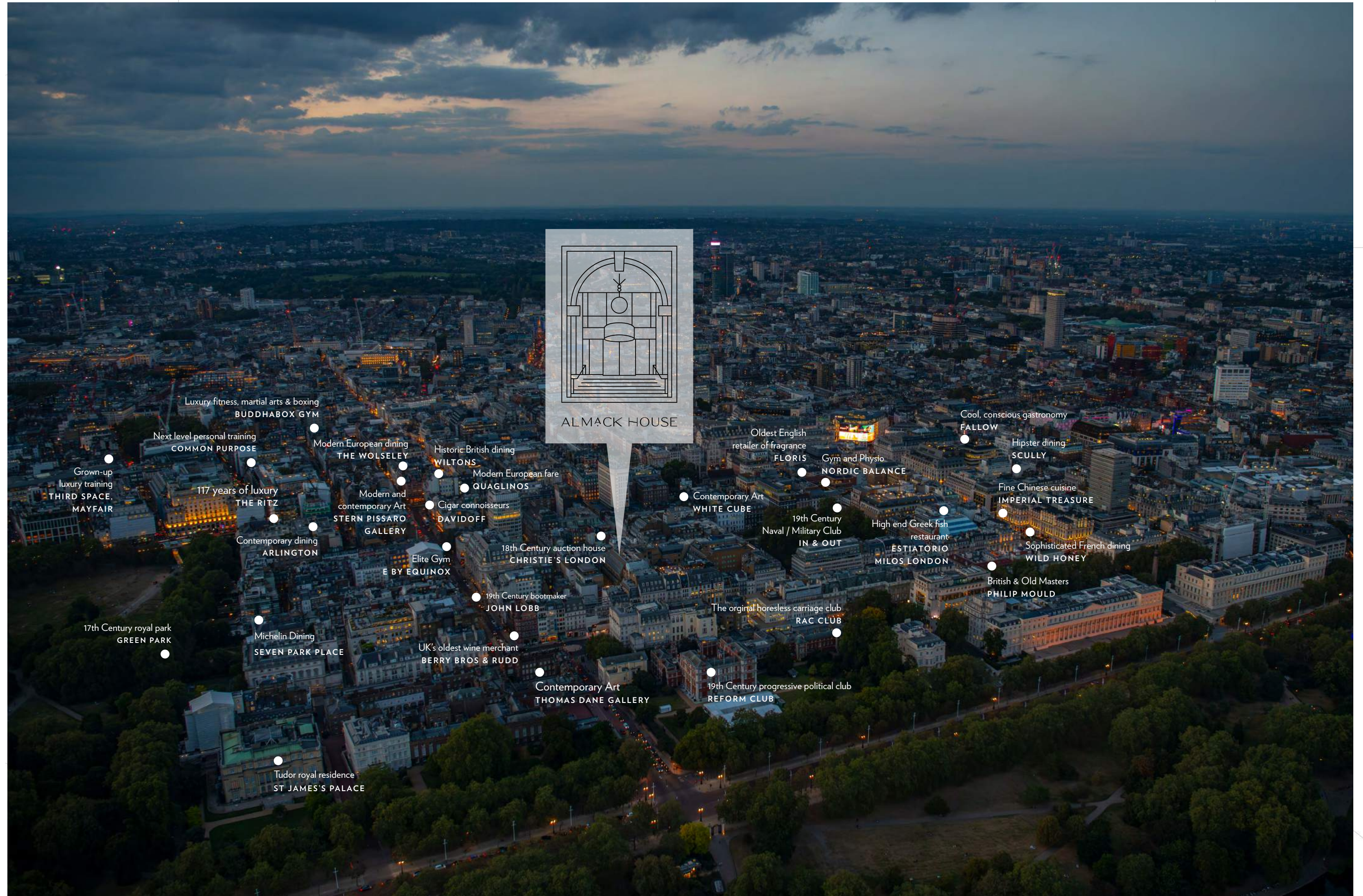
FACILITIES

FLOORPLANS

LOCATION

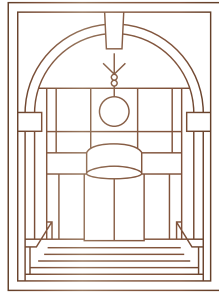
MAP

CONTACT



- Luxury fitness, martial arts & boxing  
**BUDDHABOX GYM**
- Next level personal training  
**COMMON PURPOSE**
- Grown-up luxury training  
**THIRD SPACE, MAYFAIR**
- 117 years of luxury  
**THE RITZ**
- Contemporary dining  
**ARLINGTON**
- 17th Century royal park  
**GREEN PARK**
- Modern European dining  
**THE WOLSELEY**
- Modern and contemporary Art  
**STERN PISSARO GALLERY**
- Elite Gym  
**E BY EQUINOX**
- Michelin Dining  
**SEVEN PARK PLACE**
- Tudor royal residence  
**ST JAMES'S PALACE**
- Historic British dining  
**WILTONS**
- Modern European fare  
**QUAGLINOS**
- Cigar connoisseurs  
**DAVIDOFF**
- 18th Century auction house  
**CHRISTIE'S LONDON**
- 19th Century bootmaker  
**JOHN LOBB**
- UK's oldest wine merchant  
**BERRY BROS & RUDD**
- Contemporary Art  
**THOMAS DANE GALLERY**
- Oldest English retailer of fragrance  
**FLORIS**
- Gym and Physio  
**NORDIC BALANCE**
- Contemporary Art  
**WHITE CUBE**
- 19th Century Naval / Military Club  
**IN & OUT**
- The original horesless carriage club  
**RAC CLUB**
- 19th Century progressive political club  
**REFORM CLUB**
- Cool, conscious gastronomy  
**FALLOW**
- Hipster dining  
**SCULLY**
- Fine Chinese cuisine  
**IMPERIAL TREASURE**
- Sophisticated French dining  
**WILD HONEY**
- British & Old Masters  
**PHILIP MOULD**
- High end Greek fish restaurant  
**ESTIATORIO MILOS LONDON**





## ALMACK HOUSE

INTRODUCTION

RECEPTION

TERRACE

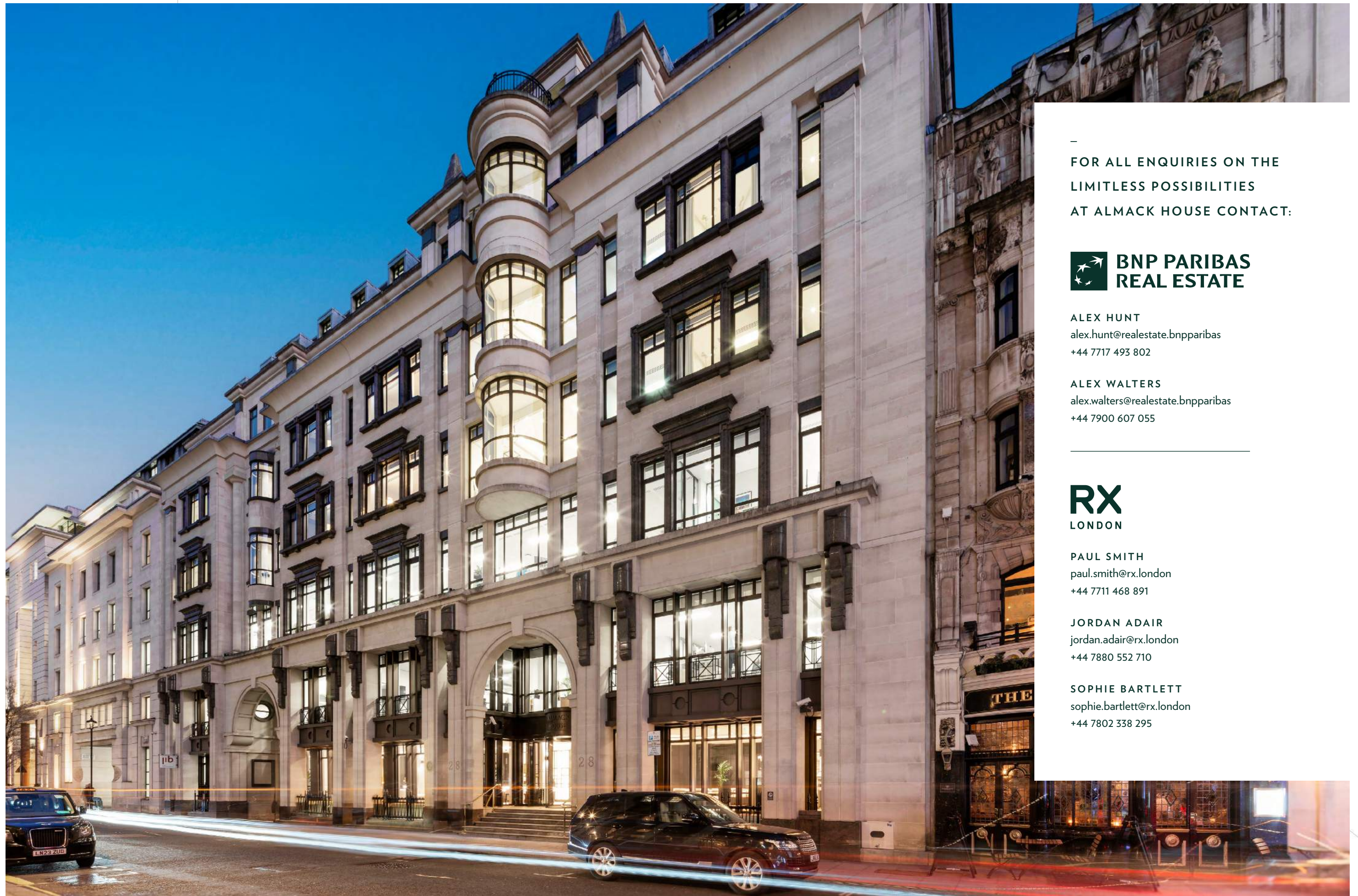
FACILITIES

FLOORPLANS

LOCATION

MAP

CONTACT



—  
FOR ALL ENQUIRIES ON THE  
LIMITLESS POSSIBILITIES  
AT ALMACK HOUSE CONTACT:



ALEX HUNT  
alex.hunt@realestate.bnpparibas  
+44 7717 493 802

ALEX WALTERS  
alex.walters@realestate.bnpparibas  
+44 7900 607 055



PAUL SMITH  
paul.smith@rx.london  
+44 7711 468 891

JORDAN ADAIR  
jordan.adair@rx.london  
+44 7880 552 710

SOPHIE BARTLETT  
sophie.bartlett@rx.london  
+44 7802 338 295