

20 **GRAFTON** ST
MAYFAIR

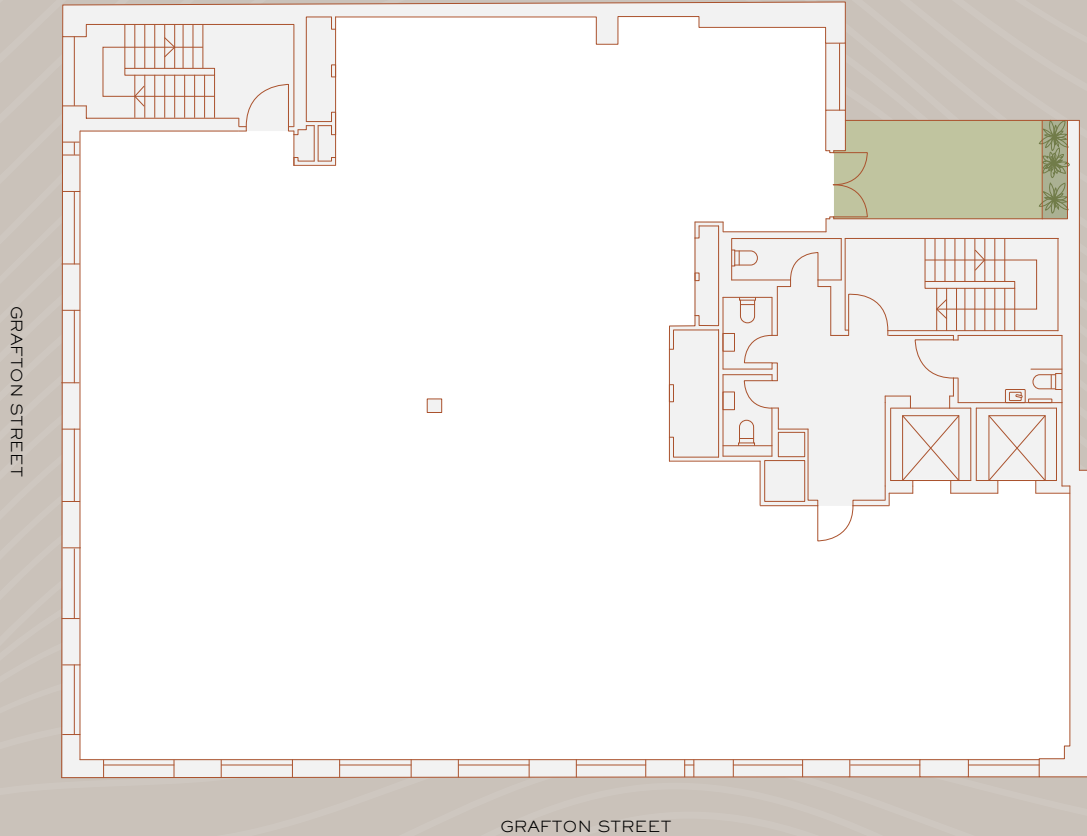
EXCEPTIONALLY REFINED

17,000 sq ft
Headquarters
in Mayfair

AVAILABLE SUMMER 2024



TYPICAL FLOOR



LEVEL	OFFICE NIA (SQ. FT)	OFFICE NIA (SQ. M)	TERRACE (SQ. FT)
ROOF TERRACE			1,093
5	2,239	208	873
4	3,520	327	153
3	3,520	327	132
2	3,821	355	154
1	3,821	355	336
RECEPTION	409	38	
TOTAL	17,330	1,610	2,741

SUMMARY SPECIFICATION



UNIQUE
17,000 SQ FT
HEADQUARTERS



TERRACES ON
EVERY FLOOR



DUAL ASPECT FRONTAGE
ON GRAFTON STREET WITH
FULL HEIGHT WINDOWS



SIXTH FLOOR WEST
FACING ROOFTOP
ENTERTAINMENT TERRACE



EXEMPLARY
RECEPTION EXPERIENCE



28 BIKE SPACES &
8 FOLDING LOCKERS



5 SHOWERS
& 36 LOCKERS



NET ZERO CARBON
ENABLED IN OPERATIONS



EPC A



BREEAM
"EXCELLENT"



ENQUIRIES

A DEVELOPMENT BY

W•R•E



ALEX KEMP

Alex.Kemp@colliers.com
+44 (0) 2074 871 713

JORDAN ADAIR

Jordan.adair@rx.london
+44 (0) 7880 552 710

TOM WILDASH

Tom.Wildash@colliers.com
+44 (0) 7825 454 808

HANNAH BUXTON

Hannah.Buxton@rx.london
+44 (0) 7976 747 569

This proposal is believed to be correct at the date of publication but its accuracy is in no way guaranteed, neither does it form part of any contract. You should take all appropriate professional advice including premises details and financial/rental information. All areas, measurements and dimensions are approximate. CGI renders shown are for illustrative purposes only.

20GRAFTONSTREET.LONDON