



6 DUKE ST
ST JAMES'S

THE FOURTH FLOOR OF THIS
COMMANDING ST JAMES'S CLASSIC
HAS BEEN COMPREHENSIVELY
REFURBISHED AND WILL PROVIDE
4,401 SQ FT OF CONTEMPORARY
OFFICE SPACE

A CONTEMPORARY YET CLASSIC
ST JAMES'S OFFICE BUILDING



6 Duke Street St James's has been designed by Barr Gazetas to provide a contemporary yet classical St James's office building.





THE RECEPTION
HAS BEEN ENLARGED AND
REMODELLED TO REFLECT
THE QUALITY AND ELEGANCE
OF ST JAMES'S



TYPICAL FLOOR (EAST VIEW)



ST JAMES'S
SQUARE

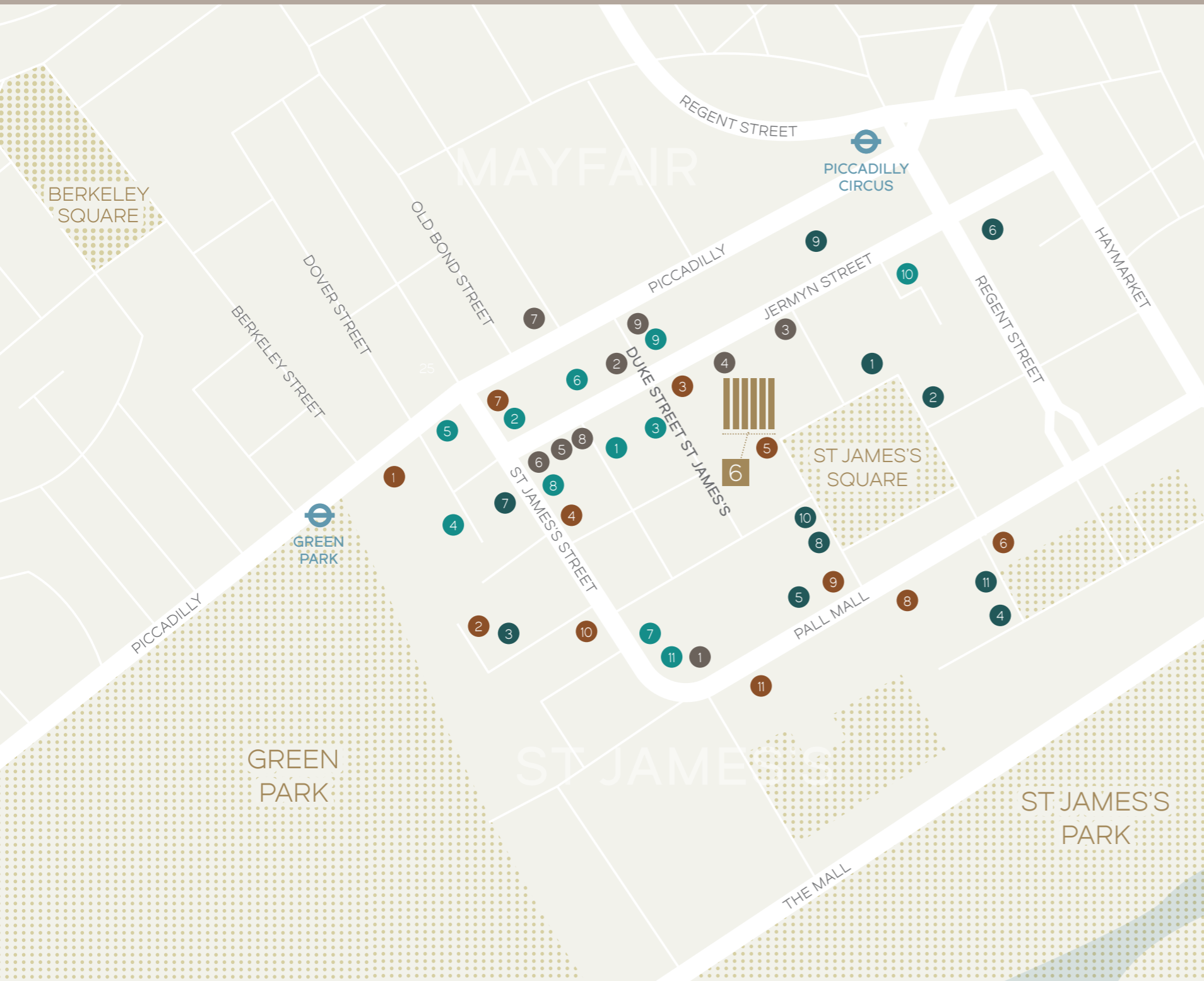
6 DUKE STREET
ST JAMES'S IS
IN A PRIME
LOCATION —

A MOMENT'S WALK
FROM ST JAMES'S
SQUARE



6 DUKE ST
ST JAMES'S

THE BEST THAT ST JAMES'S HAS TO OFFER



OFFICE OCCUPIERS

- | | |
|-------------------------|-------------------------|
| 1 Rio Tinto | 7 Artemis Capital |
| 2 BP | 8 Rolex |
| 3 Rothschild Foundation | 9 Apax Partners |
| 4 B.A.E. Sytems | 10 Civen Partners |
| 5 Credit Suisse | 11 Low Carbon Investors |
| 6 Carlyle Group | |

HOTELS & CLUBS

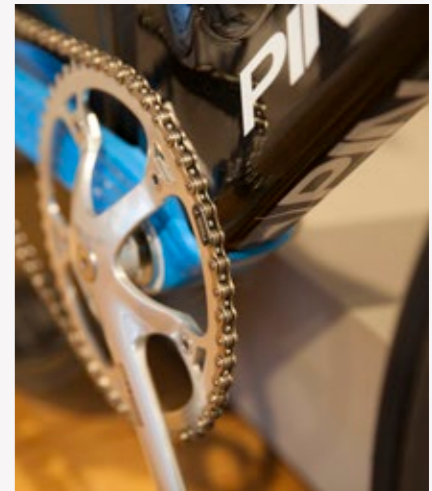
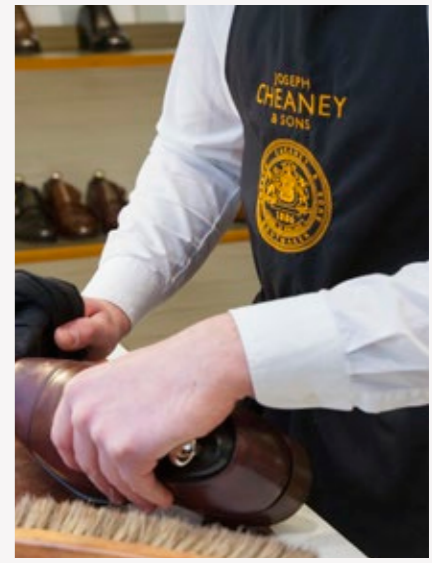
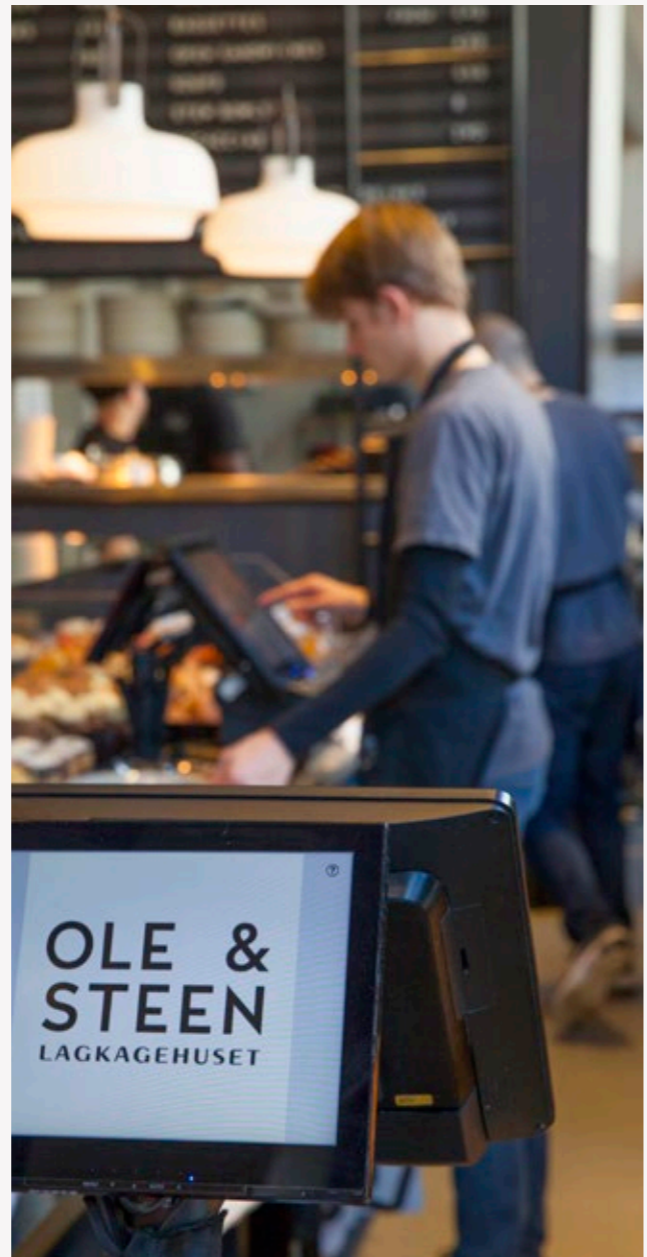
- | | |
|-------------------|-------------------------|
| 1 The Ritz | 7 White's Club |
| 2 The Stafford | 8 Royal Automobile Club |
| 3 The Cavendish | 9 Army & Navy Club |
| 4 Boodle's | 10 Carlton Club |
| 5 East India Club | 11 67 Pall Mall |
| 6 Reform Club | |

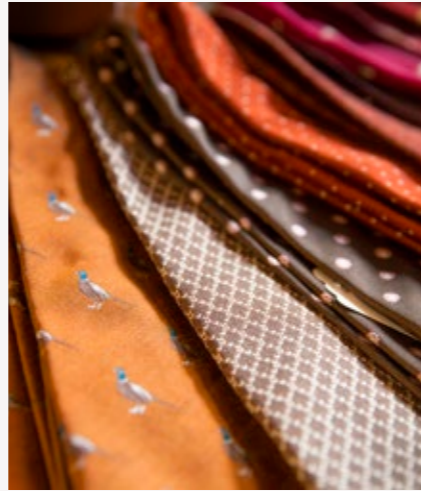
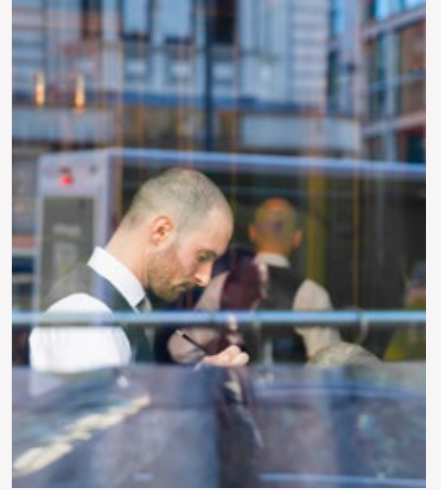
RETAIL

- | | |
|---------------------|--------------------|
| 1 Berry Bros & Rudd | 6 Davidoff |
| 2 Alfred Dunhill | 7 De Beers |
| 3 Harvie & Hudson | 8 Turnbull & Asser |
| 4 Hackett | 9 Fortnum & Mason |
| 5 Crockett & Jones | |

RESTAURANTS

- | | |
|-------------------|--------------------|
| 1 Quaglino's | 7 Avenue |
| 2 Franco's | 8 Cafe Murano |
| 3 Maison Francois | 9 45 Jermyn Street |
| 4 Le Caprice | 10 Rowley's |
| 5 The Wolesley | 11 Saint Jacques |
| 6 Wiltons | |





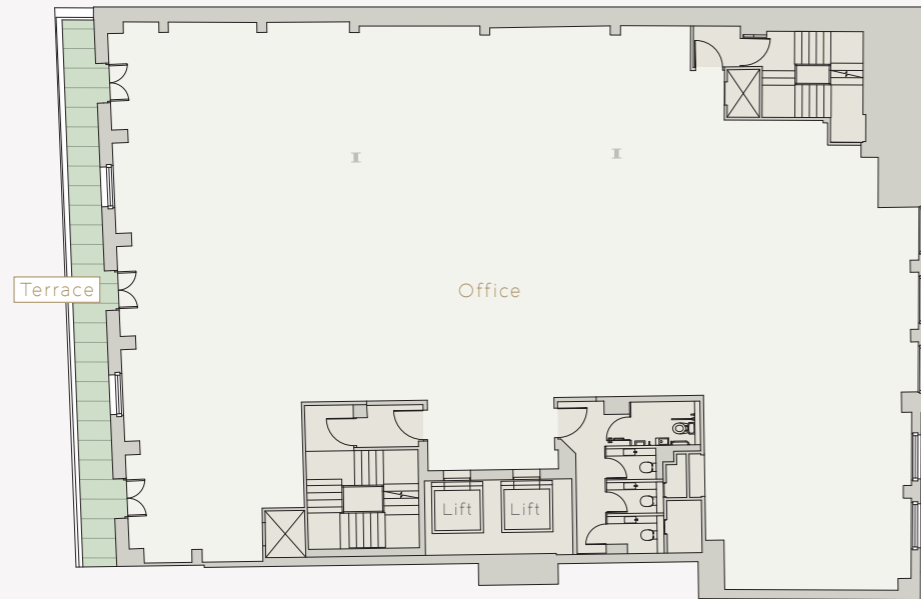


TYPICAL FLOOR (WEST VIEW)
AND TERRACE



FOURTH FLOOR

Available space - 4th floor 4,401 sq ft



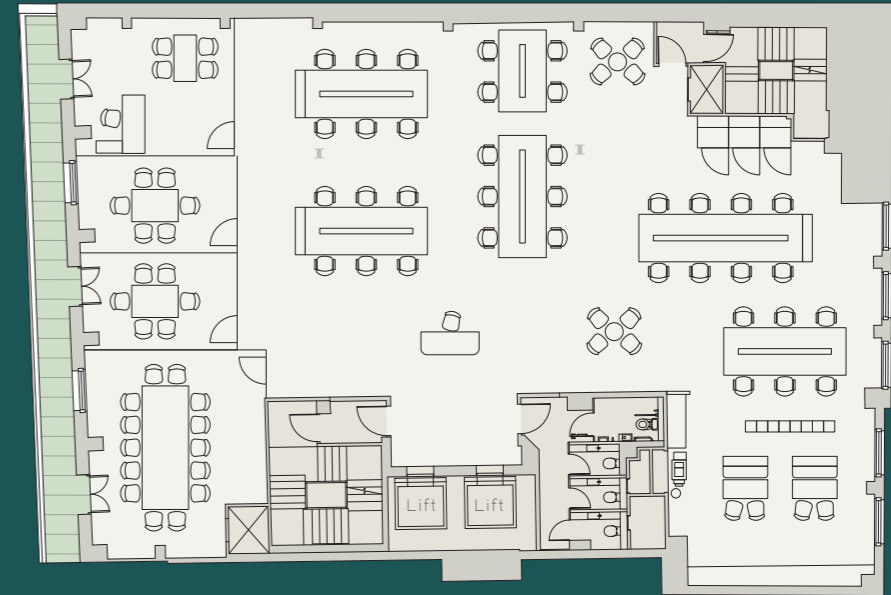
OPEN - A

Open Plan Workstations	36
Private Offices	1
Meeting Rooms	3
Large Break-out Spaces	1
Phone Booths	3
Printing / Post Room	1
Teapoints	1

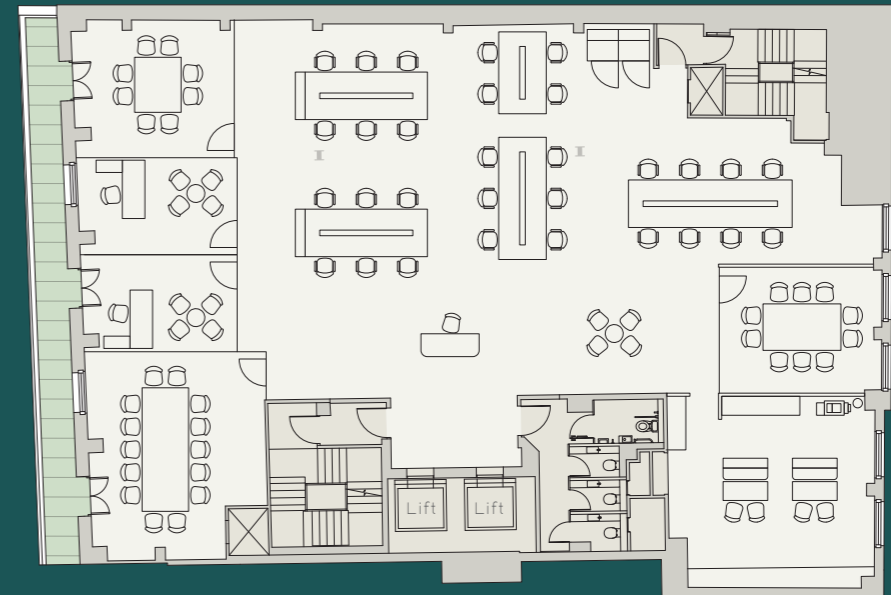
OPEN - B

Open Plan Workstations	30
Private Offices	2
Meeting Rooms	3
Large Break-out Spaces	1
Phone Booths	2
Printing / Post Room	1
Teapoints	1

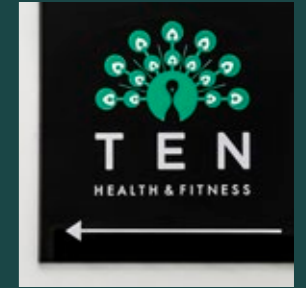
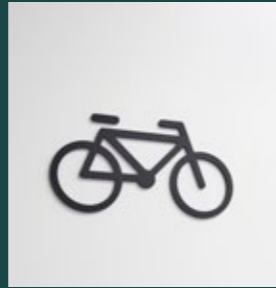
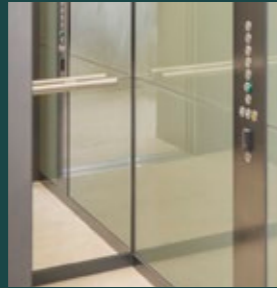
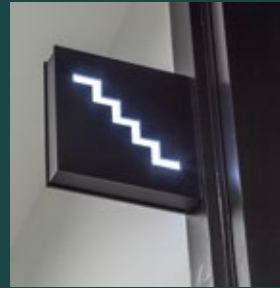
OPEN - A



OPEN - B



SPECIFICATION



OCCUPANCY

Means of escape density:
1 person/6 m²

Occupation density:
1 person/10 m²

Lift Provision:
Two x 8-person passenger lifts

Sanitary provision:
1 person/10 m²

FLOOR LOADINGS

Lower Ground Floor:
5.00 kN/m² + 1.00 kN/m² for partitions

Ground Floor:
5.00 kN/m² + 1.00 kN/m² for partitions

First Floor to Fifth Floor:
5.00 kN/m² + 1.00 kN/m² for partitions

Roof:
5.00 kN/m² in areas with a concrete slab
and 2.50 for others.

Raised floors, ceiling and services
equipment

- Lower Ground Floor
0.50 kN/m²

- Ground Floor to Fifth Floor
1.15 kN/m²

FLOOR VOIDS

Raised floor zone: As existing
(circa 120mm clear void)

Services Ceiling Zone:
Varies as existing (circa 400mm clear void
with areas of downstand beams)

STRUCTURE

Basement – Reinforced concrete frame
with precast concrete floors

Lower Ground Floor to Sixth Floor –
Steel frame with precast concrete floors

INTERNAL OFFICE FINISHES

Walls:
Emulsion paint finished plaster

Floors:
600 x 600mm accessible medium duty
metal raised floor with carpet tile finish

Ceilings:
Emulsion painted plasterboard margin
Concealed grid suspended PPC metal
plank system

Windows:
Double Glazed Units refinished internally
and externally

Light Fittings:
LED lighting designed in accordance with
the spirit of CIBSE LG7

Doors:
Solid core timber doors

Skirting:
Planted painted MDF skirting

RECEPTION

Walls:
Emulsion paint finished plaster
Shell gris limestone, honed finish
Bespoke timber cladding

Floors:
Shell Gris Limestone, honed finish

Ceilings:
Emulsion painted plasterboard

Desk:
Block desk in hot rolled steel by Isomi

TOILETS AND SHOWERS

3 no. superloos and 1 no. accessible
superloo per floor

2 no. showers with WC and 1 no. accessible
superloo on the Ground Floor

2 no. showers with WC, 1 no. WC
superloo on the Lower Ground Floor

Wall hung white vitreous china WC pans
with pipework and cisterns concealed
behind IPS panels

Walls:
Porcelain-tiled and emulsion-painted

Floors:
Porcelain tiles

Ceilings:
Emulsion-painted plasterboard with
recessed lighting

Hand Basins:
Corian vanity tops

Mirrors:
Wall mounted mirror over each vanity
top with concealed fixings and LED
feature lighting behind

Cubicles:
Veneer finish full height cubicle system

Black stainless steel ironmongery
and accessories

CYCLING FACILITIES

Secure cycle store accessed via stair
with integrated bike slide

30 standard cycle spaces

3 Brompton lockers

Locker room with 18 lockers

4 no. showers with WC and
underfloor heating

LIFTS

2 x 8-person passenger lifts serving
Lower Ground Floor to Fifth Floor

Access to Sixth Floor via 1 no.
passenger lift

Walls:
Back painted glass smoked mirror
to rear wall

Hot rolled steel cladding panels

Floor:
Shell Gris Limestone, honed finish

Ceiling:
Backlit acid etched perspex panel

MECHANICAL INSTALLATIONS

Cooling and Heating

Office Area:
VRF type air conditioning system
consisting of ceiling void mounted units
located to BCO zoning recommendations

DESIGN PARAMETERS

External Temperatures

Summer:
30°C dry bulb

21.9°C wet bulb

Winter:
-4°C saturated

Internal Temperatures

Office:
Winter 20°C +/-2°C

Summer 24°C +/-2°C

Reception:
Winter 20°C +/-2°C

Toilets:
Winter 19°C min

Illumination Levels

Office:
300 – 500 lux average illuminance at
working plane above FFL

WCs and showers:
150 – 200 lux average illuminance
at floor level

Reception:
150 – 200 lux average illuminance
at floor level

Lobbies:
200 lux maintained illuminance
at floor level

Heat Gain Allowance

Lighting:
8 W/m² office areas

Small Power:
25 W/m² for office area terminal
unit sizing

Occupants:
Sensible – 70 W per person
Latent – 45 W per person

Ventilation Rates

Office:
12 litres/s/person + 10% fresh air supply

WCs:
10 air changes per hour extract

EPC

The building has an EPC rating of B (50)

CBRE

HARRY TENTORI
harry.tentori@cbre.com
07787 698421

ALEX KERR
alex.kerr@cbre.com
07557 353990

RX
LONDON

JORDAN ADAIR
jordan.adair@rx.london
07880 552710

SOPHIE BARTLETT
sophie.bartlett@rx.london
07802 338295

Misrepresentation Act 1967

The joint agents, for themselves and for the vendors or lessors of this property, whose agents they are, give notice that: These particulars are produced in good faith, but are set out as a general guide only, and do not constitute any part of a contract. No person in the employment of the joint agents has any authority to make or give any representation or warranty whatever in relation to this property. Unless otherwise stated all rents or prices quoted are exclusive of VAT which may be payable in addition. June 2023

siren | +44 (0)20 7478 8300 | sirendesign.co.uk | 1011822

