



RX
LONDON

49 Albemarle St,
London, W1S 4JR

Progressive real estate.
On every level.



The building

Description

49 Albemarle Street offers a brand-new, high quality office space in Mayfair. The available floor has been newly fully fitted (Cat A+) by the landlord. The space is available on fully managed and inclusive arrangement from the landlord. The floor comprises 1,307 sq ft to accommodate two meeting rooms, informal breakout space, 12 open-plan desks, with demised WCs, kitchenette and a private terrace.

Term

A new lease for a term by arrangement.

Financials - Fully Managed

Rent (inclusive) £25,000 pcm

Location

Albemarle Street is situated in-between the highly sought after area of Mayfair and St James's, just a stones throw away from Berkeley Square. The area offers a variety of high-end restaurants, cafés and bars.

Specification

- Newly refurbished floor
- High spec
- Provided as Cat A +
- Excellent natural light
- Passenger lift
- Demised kitchen
- Private terrace
- Available fully managed - inclusive rent



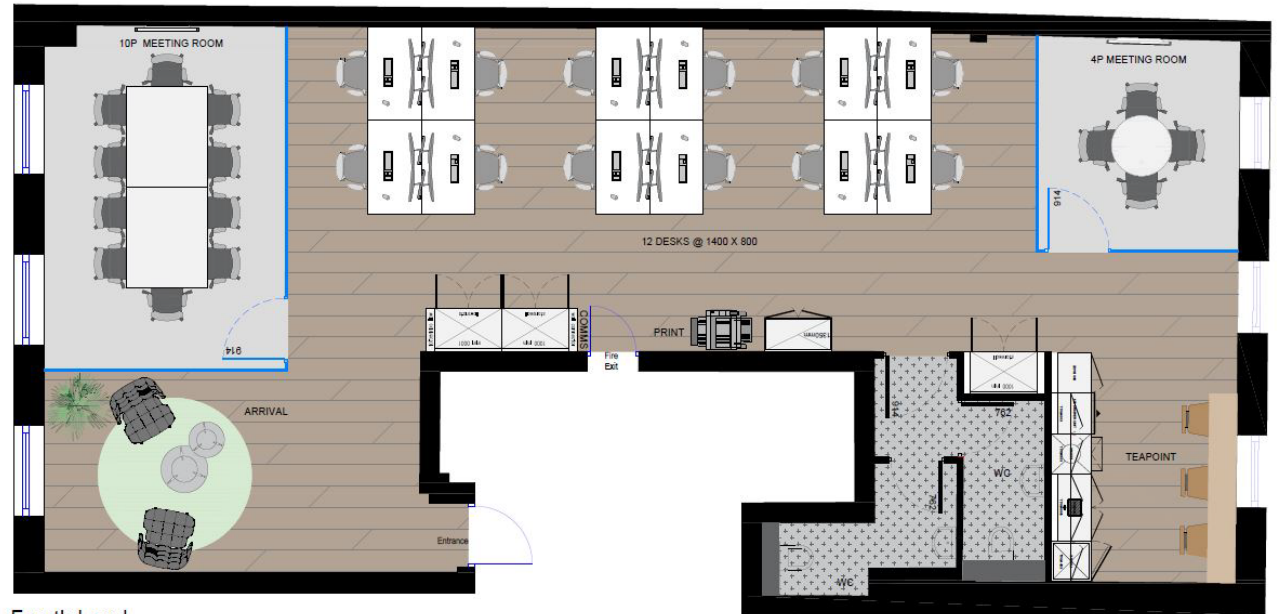
Schedule of Areas

Floor	sq ft	sq m	Status
Fourth	1,307	121.42	Available
Total	1,307	121.42	Available

Floor Plan

Indicative floor plan

1,307 sq ft / 121.42 sq m



Fourth Level

For indicative purposes only. Not to scale.



Progressive real estate.
On every level.

Jordan Adair
+44(0)7880 552 710
jordan.adair@rx.london

Imogen Purvis
+44 (0)7377 978 348
Imogen.purvis@rx.london

@rxlondon
info@rx.london rx.london

Jack Rose
+44 (0)7590 814 753
jack.rose@rx.london

Important Notice

1. Particulars: These particulars are not an offer or contract, nor part of one. You should not rely on statements by RX London in the particulars or by word of mouth or in writing ("information") as being factually accurate about the property, its condition or its value. Neither RX London nor any joint agent has any authority to make any representations about the property, and accordingly any information given is entirely without responsibility on the part of the agents, seller(s) or lessor(s).

2. Photos etc: The photographs show only certain parts of the property as they appeared at the time they were taken. Areas, measurements and distances given are approximate only.

3. Regulations etc: Any reference to alterations to, or use of, any part of the property does not mean that any necessary planning, building regulations or other consent has been obtained. None of the services or appliances have been tested and no warranty is given or is to be implied that they are in working order. A buyer or lessee must find out by inspection or in other ways that these matters have been properly dealt with and that all information is correct.

4. VAT: The VAT position relating to the property may change without notice.

RX London is a limited liability partnership registered in England with registered number 12905015. Our registered office is as follows: RX London 1st Floor, 71 Broadwick Street, London, W1F 9PD