



6 Knightswood, Hereford, HR1 1UZ

Asking Price £285,000



6 Knightswood, Hereford, HR1 1UZ

Trivett Hicks is pleased to offer this four bedroom semi detached family home, located to the east of Hereford City in this sought after location. The property has good access to nearby amenities to include local colleges, pharmacy, Tesco Express and petrol station, fast food takeaways, off license and a hairdressers.

The property would benefit from some improvement, mostly cosmetic. The accommodation offers: entrance hall, living room, fitted kitchen, dining room, cloakroom all to the ground floor. To the first floor four bedrooms and a family bathroom.

The property benefits from oil fired central heating, double glazing, garage, off road parking for several cars and gardens.

FULL DETAILS

ENTRANCE HALL

Radiator, power point and door to:

FITTED KITCHEN 12'4" x 7'4" (3.78m x 2.26m)

Fitted with a matching range of base and eye level units with worktop space over, stainless steel sink unit, tiled splashbacks, plumbing for automatic washing machine, space for fridge/freezer and cooker, double glazed window to the rear aspect, power points and double glazed door to the rear garden, door to:

DINING ROOM 12'4" x 9'11" (3.78m x 3.03m)

Double glazed window to the rear aspect, radiator, power points, double glazed double doors to the rear garden, folding door to:

LIVING ROOM 15'10" max x 13'10" (4.84m max x 4.22m)

Double glazed window to the front aspect, radiator, TV point, power points, central heating thermostat, under stairs storage cupboard, door to:

CLOAKROOM

Obscure double glazed window to the side aspect, fitted with two piece suite comprising, wash hand basin and low-level WC.

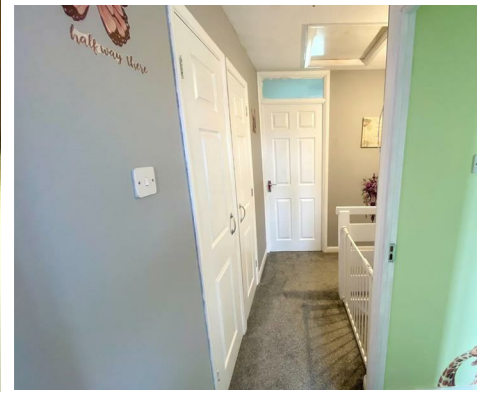
FROM ENTRANCE HALL STAIRS LEAD TO THE FIRST FLOOR

FIRST FLOOR

LANDING

Power point, access to the roof space, door to:

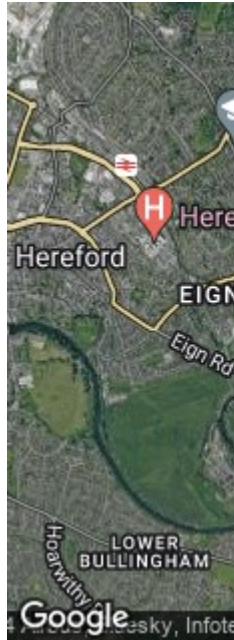




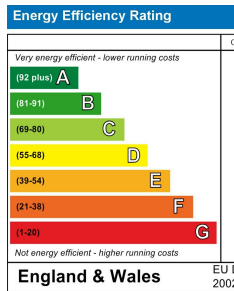
Floor Plan



Area Map



Energy Efficiency



These particulars, whilst being intended to provide a general impression of the property, do not constitute any part of an offer or any statements of representation or warranty. No person in this office shall be held liable for any inaccuracy. No person in this office shall be held liable for any inaccuracy or warranty in respect of the property.

Hereford
T 01432 274300
E hereford@trivett-hicks.com
 10 St. Peters Street
 Hereford
 HR1 2LE

Directors

Jason Hicks MNAEA
 Jeremy Trivett

TrivettHicks Ltd Registered Office

SME House, Unit 1, Holme Lacy Industrial Estate, Herefordshire HR2 6DR. Registered No 4380917