



2, Islands Brow, Laffak, WA11 9LA

Reduced To £160,000

*David
Davies* *Collection*

2, Islands Brow, Laffak, WA11 9LA

- EPC:D
- Council Tax Band:B
- Fantastic Corner Plot
- Brand New Carpets Throughout
- Attached Garage & Driveway Parking
- Leasehold
- Three Bedroom Semi Detached Property
- No Chain Property
- Freshly Painted
- Popular Residential Area

David Davies Sales & Lettings is delighted to welcome to market this three bedroom semi detached family home. Situated on a fabulous corner plot, it is a great opportunity for first time buyers or any home mover.

The ground floor comprises of; entrance porch, large open plan living/dining room which provides access to the rear garden through the French doors and a spacious kitchen.

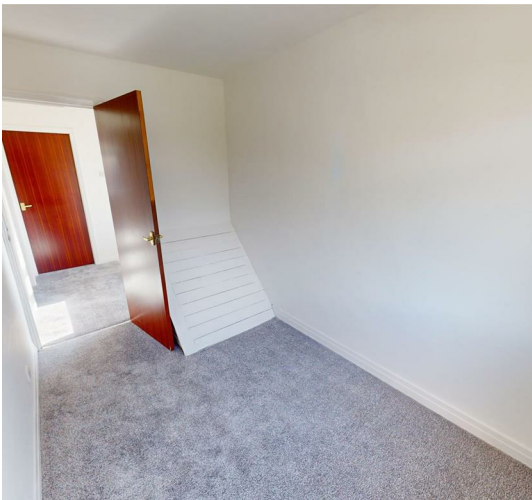
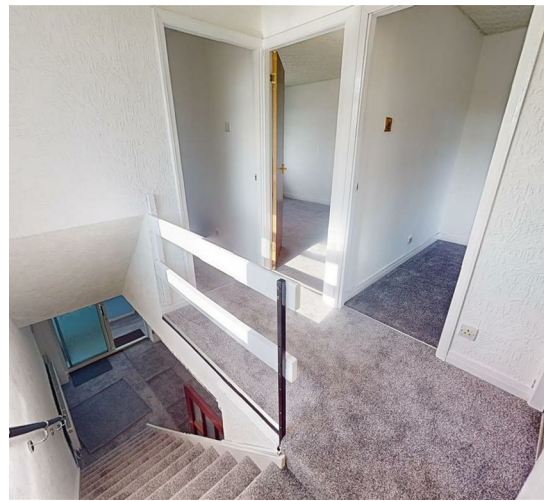
To the first floor there are three bedrooms, two of which are easy doubles and a modern family bathroom with brand new, never used before toilet, sink basin and bath.

Externally there are gardens to the front, side and rear with an attached garage. There is driveway parking for at least two cars. The property is offered with no onward chain and is in move in condition with brand new carpets fitted throughout and freshly painted in neutral colours!

Located prominently on Islands Brow, the property allows easy access the centre of St Helens. Ideally positioned close to the East Lancashire Road (A580) giving access to both Liverpool and Manchester. Public transport is easily accessible from the property. Haresfinch Park is within a short walking distance, along with local schools and amenities.

EPC:D







David Davies

Our family owned Independent Estate Agency was established in 1981 and provides a **refreshingly professional service** combining traditional values with a modern approach.

David Paul Davis

You may download, store and use the material for your own personal use and research. You may not republish, retransmit, redistribute or otherwise make the material available to any party or make the same available on any website, online service or bulletin board of your own or of any other party or make the same available in hard copy or in any other media without the website owner's express prior written consent. The website owner's copyright must remain on all reproductions of material taken from this website.

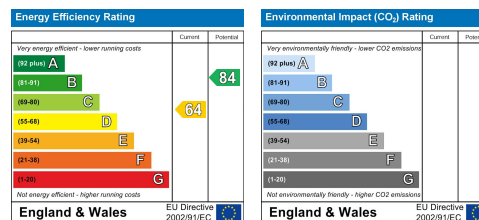
ALLISONS

For life's meaningful moments

A better **mortgage deal** made a good deal easier

Talk to our independent mortgage specialists on **01744 885555** or visit **allisonsfinancial.com**

Allisons Financial Planning Ltd is authorised and regulated by the Financial Conduct Authority.



Information on tenant permitted fee's can be accessed via the link below www.daviddaviesestateagent.co.uk/tenant

22 Church Road, Rainford, St Helens, WA11 8HE
T: 01744 885753
sales@daviddaviesestateagent.co.uk
lettings@daviddaviesestateagent.co.uk
www.daviddaviesestateagent.co.uk

