

KAN MOVE

Estate Agents

2 bed End Terrace House for sale - £84,950

Bridge Street - Bishop Auckland



Council Tax Band: A

EPC Rating: D

Situated within walking distance to the market place of Bishop Auckland and the well known tourist attraction KYNREN, A two bedroom end terraced house sold with SITTING TENANT (please enquire for more rental income details) Property comprises of spacious lounge, kitchen and a separate utility, first floor bathroom, a rear yard and side paved garden with double timber gates offering off street parking....(please note the shed is not included in the sale) Viewing by appointment only



1 Bathrooms

2 Beds

- TWO BEDROOM END TERRACED HOUSE
- SOLD WITH SITTING TENANT
- GAS FIRED CENTRAL HEATING
- PAVED GARDEN TO THE SIDE
- YARD TO REAR
- DOUBLE GLAZED

SCAN FOR DETAILS

Entrance

UPVC entrance door into vestibule with stairs to first floor landing.

Lounge 15' 0" x 12' 0" (4.57m x 3.65m)

UPVC Double glazed window to front, feature inset fire place, understairs storage cupboard.

Kitchen 8' 0" x 9' 0" (2.44m x 2.74m)

UPVC Window to rear, wall and base units, stainless steel sink unit with mixer tap, electric hob and oven, plumbing for washing machine, space for fridge freezer.

Utility room

UPVC double glazed window and door to rear yard. cupboard the housing boiler

First Floor Landing

Landing, loft hatch

Bedroom One 13' 0" x 9' 0" (3.96m x 2.74m)

UPVC double glazed window to front

Bedroom Two 9' 0" x 8' 0" (2.74m x 2.44m)

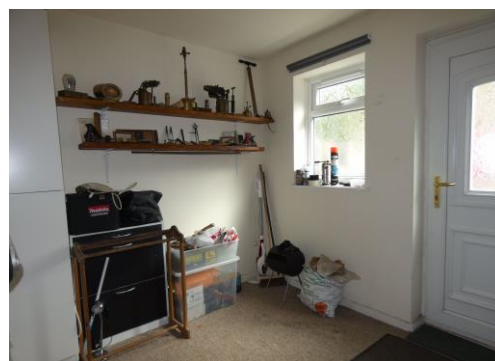
UPVC double glazed window to rear

Family Bathroom

P-Shaped bath with mixer tap shower over, pedestal wash hand basin, low level W/C, chrome heated towel rail.

Externally

A Rear yard with a paved garden to the side with timber fence and double gates which offers off street parking. ** please note the shed is not included**

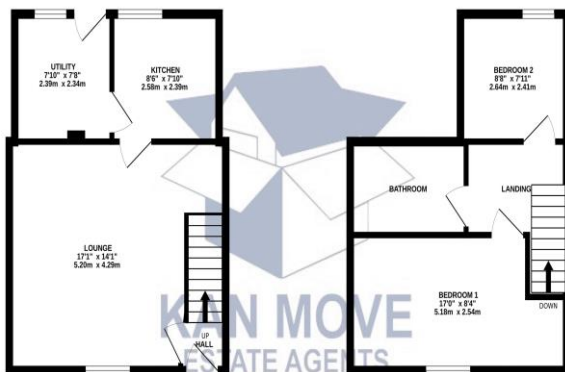


Energy Efficiency Rating

| Score | Energy rating | Current | Potential |
|-------|---------------|---------|-----------|
| 92+ | A | | |
| 81-91 | B | | 82 B |
| 69-80 | C | | |
| 55-68 | D | 61 D | |
| 39-54 | E | | |
| 21-38 | F | | |
| 1-20 | G | | |

GROUND FLOOR

1ST FLOOR



4 BRIDGE STREET BA018025

While every effort has been made to ensure the accuracy of the floor plan, measurements of floor, ceiling, height and area are approximate and not intended to be used for any purpose other than to provide a general impression of the property. The actual, precise and accurate measurements should be used for any purpose other than to provide a general impression of the property. Measurements are taken to the best of our knowledge and are not intended to be used for any purpose other than to provide a general impression of the property. Measurements are taken to the best of our knowledge and are not intended to be used for any purpose other than to provide a general impression of the property.



KAN MOVE
Estate Agents

Kan Move Limited - Company no. 11972803
38 High Street, Spennymoor, Co. Durham, DL16 6DB
01388417270
info@kanmove.com
kanmove.com