

66 Pointelle House, 190 London Road, Wallington, SM6
7FW



2



2



1

Guide price £350,000

WH WATSON HOMES
Estate Agents

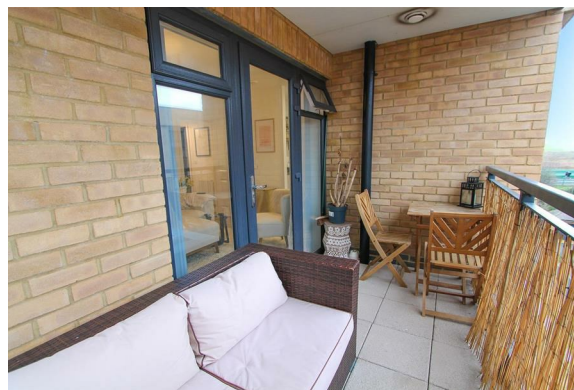
66 Pointelle House, 190
London Road
Wallington, SM6 7FW

Watson Homes are delighted to present this stunning two bedroom luxury modern apartment, located in the popular New Mill Quarter development in Hackbridge. This superb home boasts a beautifully designed open plan living, kitchen and dining area, ideal for entertaining family and friends, and a large private balcony which offers the perfect place for relaxing after a long day!

The property is finished to a high specification throughout, with a contemporary kitchen equipped with integrated appliances, two luxury bathrooms (one en-suite), and two well proportioned bedrooms. Furthermore, there is a secure gated parking space, providing you with peace of mind.

Pointelle House offers excellent access to local shops and amenities. There are great transport links with Hackbridge mainline train station only a short walk away with it's fast links into Central London. For those looking for local green space to enjoy, Beddington Park and the Wandle Trail are close by. Don't miss the opportunity to make this elegant flat your new home. Contact us today to arrange a viewing and experience the luxury and comfort this property has to offer.

- Accommodation
- Video phone entry system, door into communal hallway. Stairs and lifts to 4th floor.
- Front door into
- Entrance Hall
- Videophone entry system, laminate flooring, space and plumbing for washing machine/dryer, radiator.
- Bedroom One
- Wardrobe with mirrored sliding doors, radiator, fitted carpet, double glazed obscure window to front aspect, door into
- En-suite Shower Room
- Modern suite comprising of shower





cubicle with sliding door, thermostatic shower, wash hand basin with chrome mixer tap, enclosed WC, tiled walls and flooring, extractor fan, heated chrome towel rail.

Bedroom Two

Radiator, fitted carpet, double glazed window to front aspect



Bathroom

Modern three piece suite comprising of panel enclosed bath with shower screen and chrome mixer tap, thermostatic shower, wash hand basin with chrome mixer tap, enclosed WC, heated chrome towel rail, tiled walls and flooring

Open Plan Living Dining and Kitchen Area



Living Area

Radiator, laminate flooring, double glazed window and door leading out to private balcony.

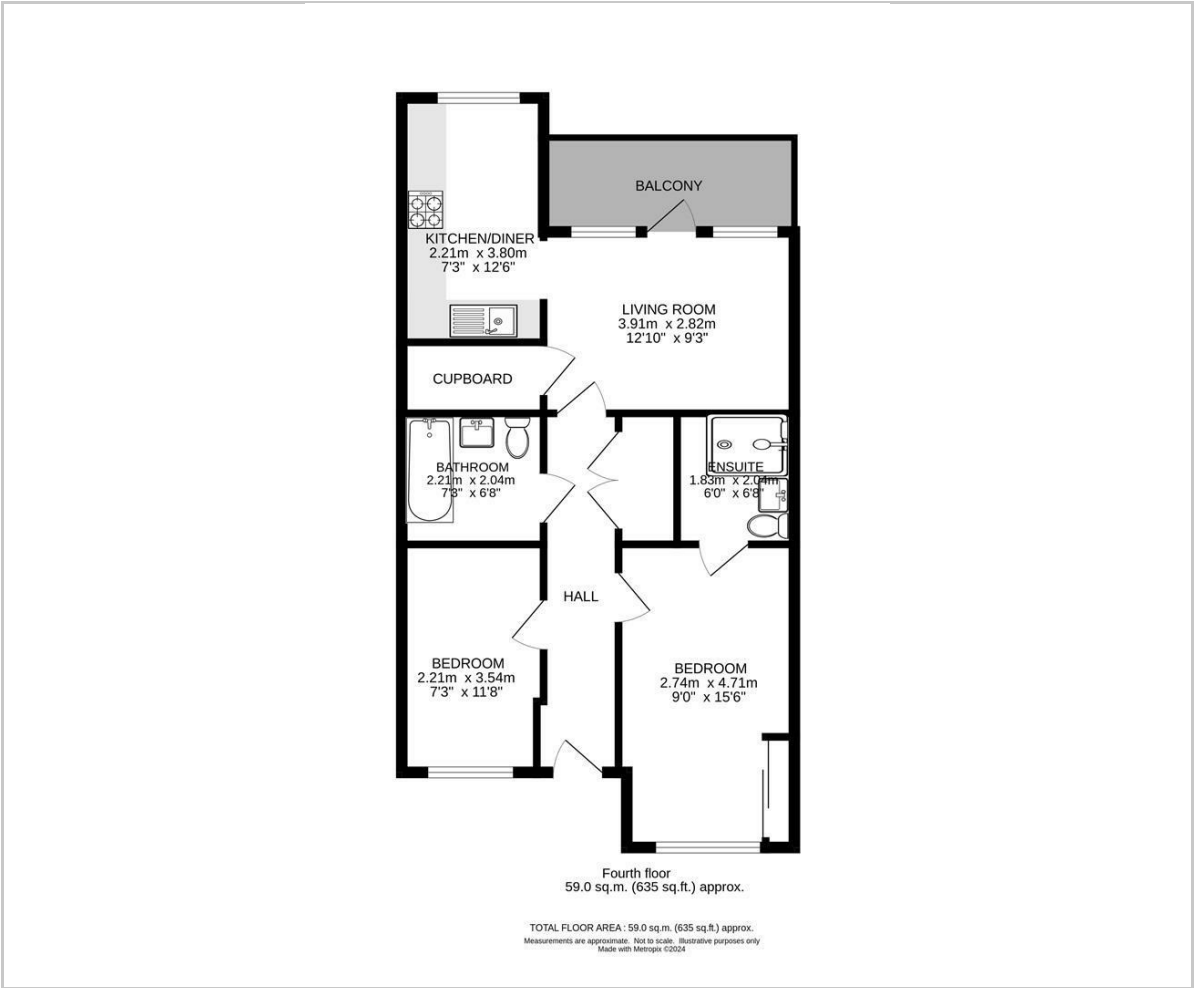
Kitchen Dining Area

Range of modern kitchen units and drawers, worksurface, inset stainless steel sink with chrome mixer tap, integrated oven and electric hob with extractor fan above, integrated fridge, freezer and dishwasher, laminate flooring, double glazed window to rear aspect with bespoke fitted shutters.



Secure gated parking

Floor Plan

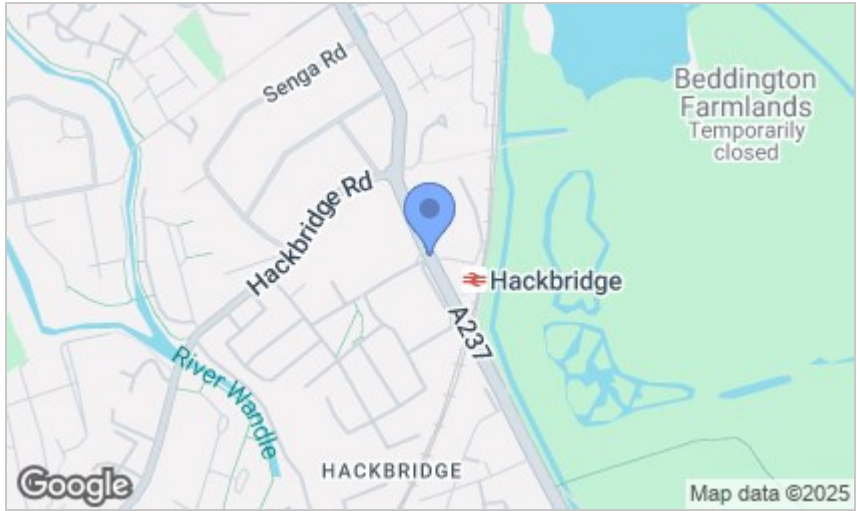


Viewing

Please contact our Watson Homes Carshalton Beeches Office on 020 4537 3222 if you wish to arrange a viewing appointment for this property or require further information.

These particulars, whilst believed to be accurate are set out as a general outline only for guidance and do not constitute any part of an offer or contract. Intending purchasers should not rely on them as statements of representation of fact, but must satisfy themselves by inspection or otherwise as to their accuracy. No person in this firms employment has the authority to make or give any representation or warranty in respect of the property.

Area Map



Energy Efficiency Graph

