



8 Eleonora Terrace Lind Road, Sutton, SM1 4PU



Guide price £220,000

WH WATSON HOMES
Estate Agents

NO ONWARD CHAIN & LONG LEASE

Watson Homes is delighted to introduce this one-bedroom apartment in the sought-after Lind Road. Situated on the first floor, this property offers convenience and comfort within easy reach of Sutton Mainline station and convenient town centre.

This apartment is offered in good order and with the bonus of no onward chain, making it an attractive option for those looking to move swiftly. Additionally, the property benefits from a lengthy 960-year lease, ensuring long-term peace of mind. Resident parking.

Don't miss out on this fantastic opportunity to own this lovely apartment. Contact us today to arrange a viewing and make this apartment your new home!

Accommodation

Part glazed door into communal hallway. Stairs to all floors. Front door into

Entrance Hall

Two storage cupboards, (one housing immersion heater and water meter), laminate flooring.

Bathroom

Three-piece suite comprising of panel enclosed bath with shower screen and chrome taps with shower head attachment, pedestal wash handbasin with chrome taps, WC, tiled walls, laminate flooring, obscure window to front aspect.

Bedroom

Built-in shelving and storage, laminate flooring, window to rear aspect, ceiling electric heating.

Open plan Living Dining Room

Laminate flooring, window to rear aspect, ceiling electric heating, security phone entry system.

Kitchen

Range of white gloss fitted kitchen units and drawers, laminate worksurface, inset stainless steel sink with chrome mixer tap, space for cooker, tall fridge/freezer and washing machine, tiled splashback, laminate flooring, window to front aspect.

Outside

Designated covered parking bay

ROOM MEASUREMENTS (Maximum measurements)

Living Room 13'10 x 10'7

Kitchen 9'11 x 7'1

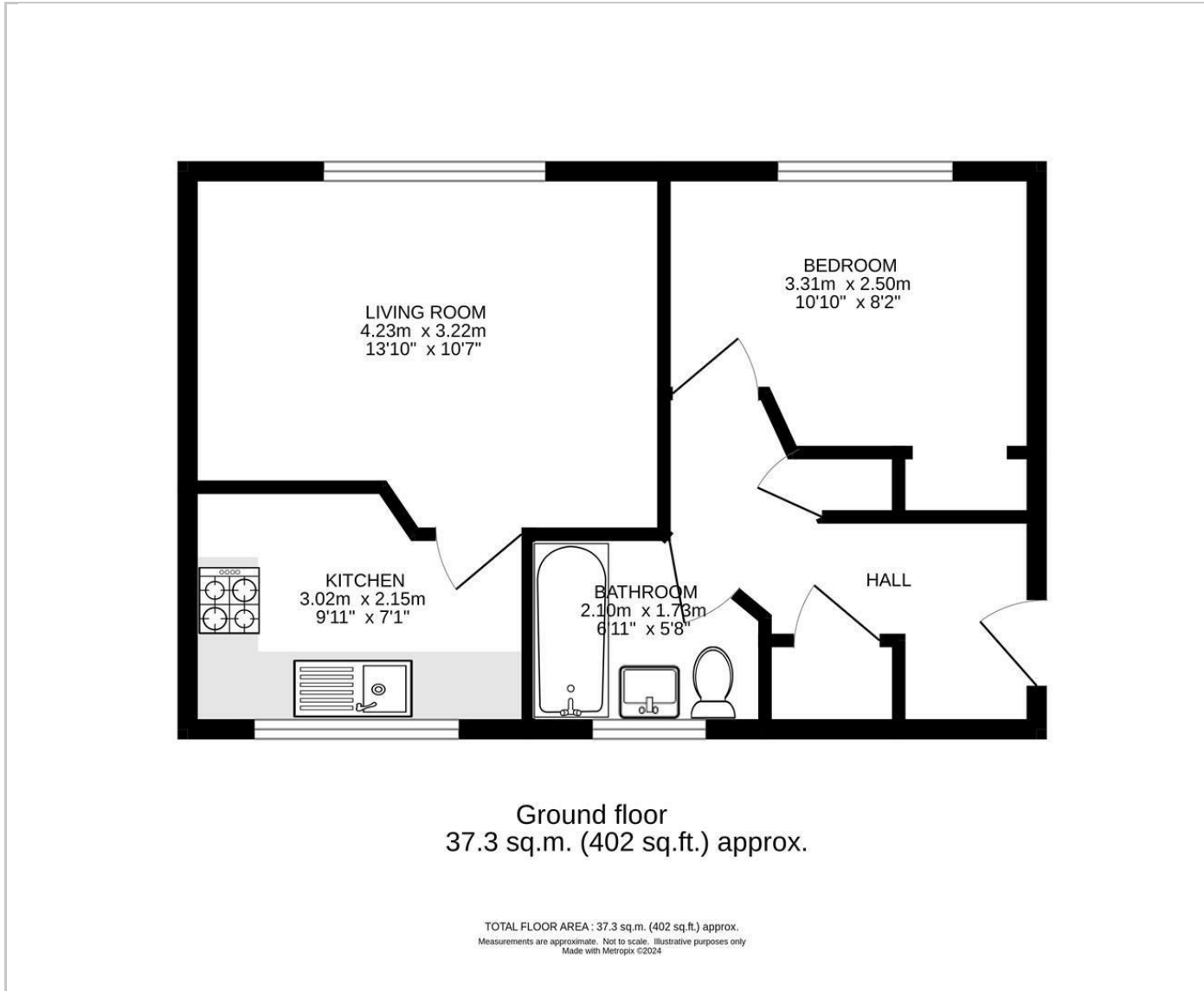
Bedroom 11'0 x 8'0

Bathroom 10'10 x 8'2

No Onward Chain



Floor Plans



Area Map



Energy Performance Graph

