



20 Forest Dene Court Cedar Road, Sutton, SM2 5LP



Guide price £100,000

WH WATSON HOMES
Estate Agents

20 Forest Dene Court Cedar Road

Sutton, SM2 5LP

Retirement flat for the over 60's! Watson Homes are pleased to offer this second floor retirement apartment located in the heart of Sutton, close to all the local shops, amenities and transport links. Forest Dene Court is an affordable, convenient lift serviced development with a well maintained communal garden and great communal facilities with a residents lounge, laundry room and communal kitchen. There is an on site Development Manager and the property also offers resident and visitors parking.

Accommodation

Front door into

Entrance Hall 3' x 8'10"

With storage cupboard, fitted carpets, wall mounted phone and Careline alarm.

Living / Dining room 10'7" x 15'5"

Fitted carpet, wall mounted electric heater, double glazed windows.

Kitchen 7'4" x 5'4"

Range of fitted units and drawers, with single drainer stainless steel sink with chrome mixer tap, space for electric oven, space for tall fridge freezer, double glazed window, tiled walls.



Bedroom 8'10" x 12'3"

Fitted carpets, wall mounted electric heater, built in wardrobes with mirrored doors, double glazed window.

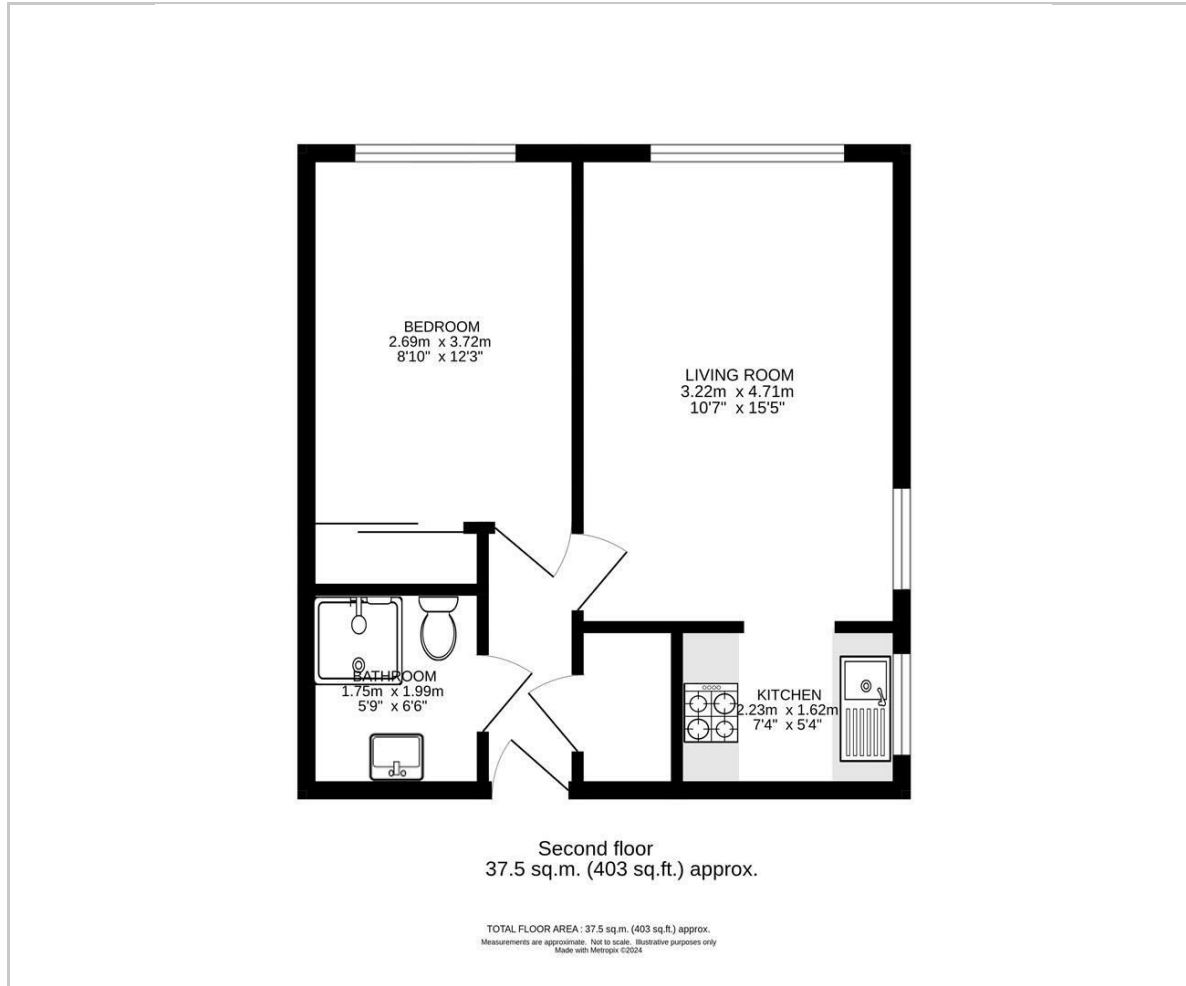
Bathroom 5'9" x 6'6"

Large walk in shower with hand rail & seat, fitted vanity unit with chrome mixer tap, low level wc with push button flush, heated towel rail, extractor fan.

Communal Facilities

Including a large residents lounge, laundry room & communal kitchen. The property also has an attractive communal garden with lawn and large patio area, car park with residents and guest parking.

Floor Plan



Viewing

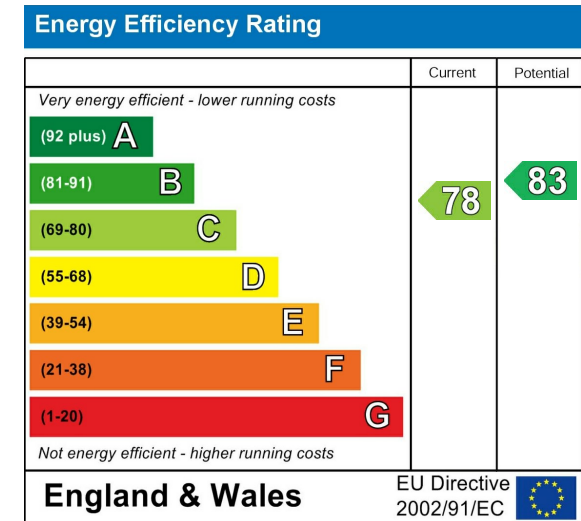
Please contact our Watson Homes Carshalton Beeches Office on 020 4537 3222 if you wish to arrange a viewing appointment for this property or require further information.

These particulars, whilst believed to be accurate are set out as a general outline only for guidance and do not constitute any part of an offer or contract. Intending purchasers should not rely on them as statements of representation of fact, but must satisfy themselves by inspection or otherwise as to their accuracy. No person in this firm's employment has the authority to make or give any representation or warranty in respect of the property.

Area Map



Energy Efficiency Graph



58 Banstead Road, Surrey, SM5 3NL

Email: email@watsonhomesproperty.com Tel: 020 4537 3222

www.watsonhomesproperty.com

WH WATSON HOMES
Estate Agents