



**74 Brisbane Street. Waverley Court**  
, Largs, KA30 8QN

**Offers over £90,000**





**74 Brisbane Street.**  
**Largs, KA30 8QN**

Within walking distance to Largs Town Centre and Largs promenade this well presented main door flat within the popular Waverley Court development is sure to appeal to a variety of buyers. On entering the property there is a hallway with stairs leading to the living spaces which consist of a living room with electric fire and large storage cupboard, kitchen with hill views, floor and wall mounted units, double bedroom with mirrored wardrobes and storage cupboard and shower room with mains powered shower, WC, sink with vanity unit and heated towel rail.

Largs has a variety of cafes, bars, restaurants and independent shops as well as good transport links to Glasgow and Ayrshire with the Isle of Cumbrae is only a short ferry trip away.

Gas central heating  
Double glazing  
Council Tax Band C

**Entrance Hallway**  
11'4 x 6'0 (3.45m x 1.83m)

**Landing**  
5'10 x 3'3 (1.78m x 0.99m)

**Hall**  
10'7 x 2'9 (3.23m x 0.84m)

**Kitchen**  
8'9 x 5'9 (2.67m x 1.75m )

**Living Room**  
11'8 x 14'0 (3.56m x 4.27m)

**Shower Room**  
6'6 x 5'4 (1.98m x 1.63m)



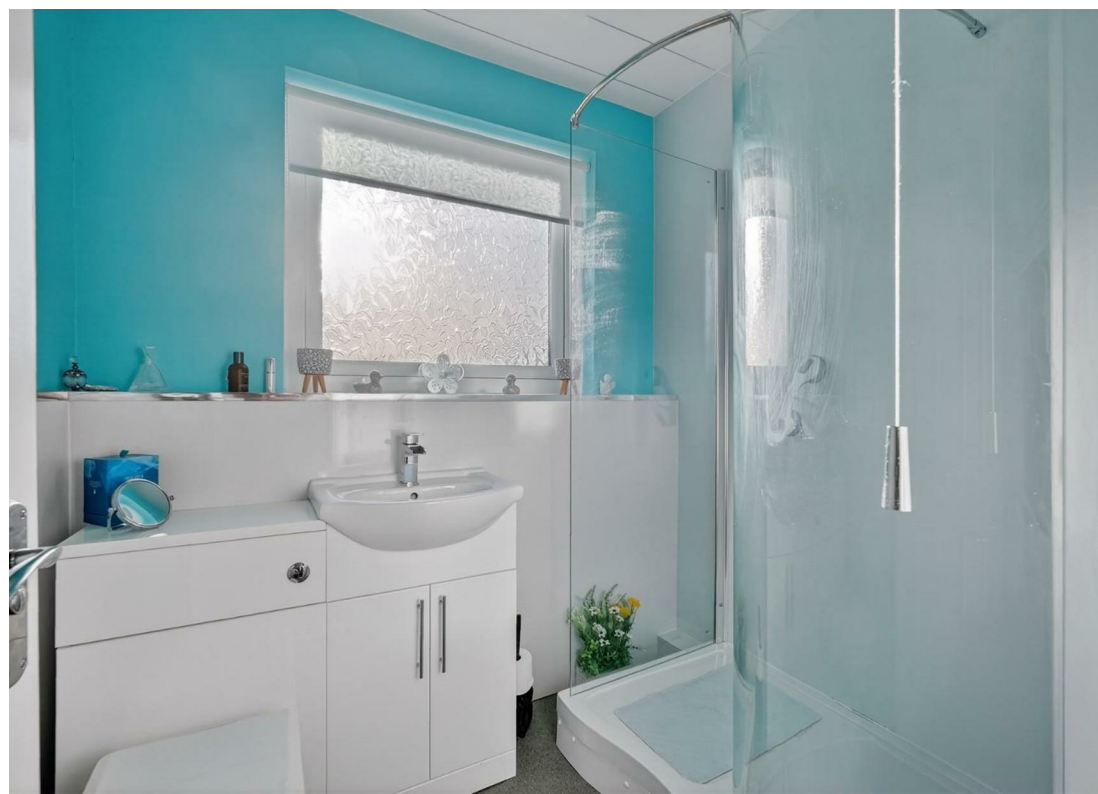




## Bedroom

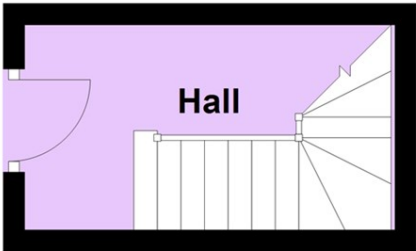
13'7 from back of wardrobes x 10'0  
(4.14m from back of wardrobes x  
3.05m)

## Outside



Floor Plan

Flat Entrance

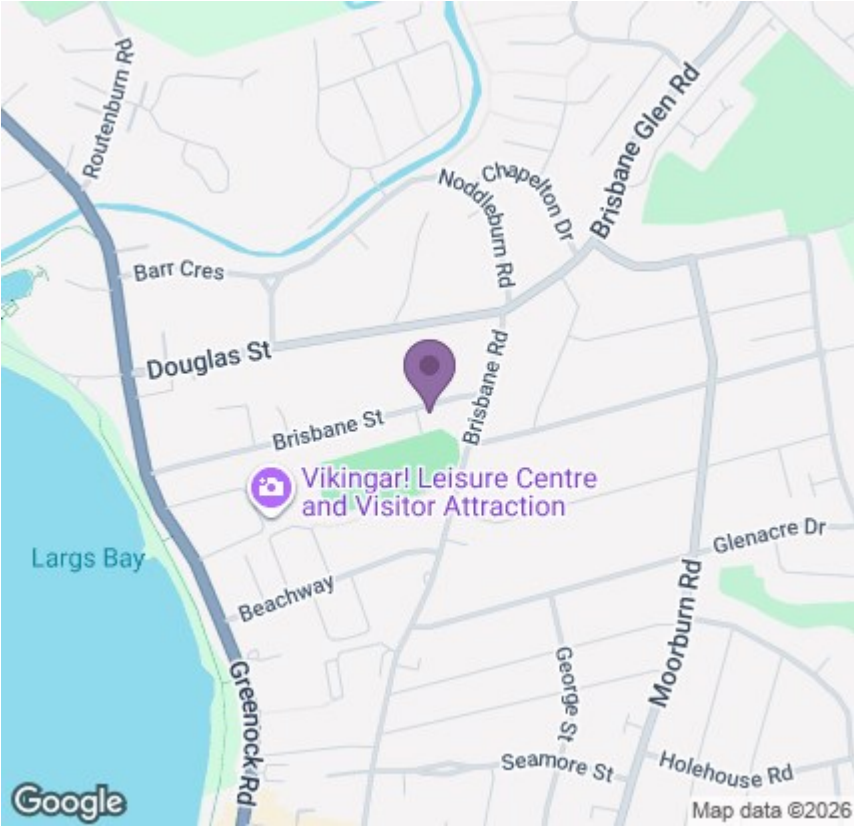


Viewing

Please contact our Largs Office Office on 01475673663 if you wish to arrange a viewing appointment for this property or require further information.

These particulars, whilst believed to be accurate are set out as a general outline only for guidance and do not constitute any part of an offer or contract. Intending purchasers should not rely on them as statements of representation of fact, but must satisfy themselves by inspection or otherwise as to their accuracy. No person in this firms employment has the authority to make or give any representation or warranty in respect of the property.

Area Map



Energy Efficiency Graph

