



10c Howard Street

Millport, Isle Of Cumbrae, KA28 0AY

Offers over £55,000

Icons representing property features: a bed icon with '1', a bathtub icon with '1', a sofa icon with '1', and a menu icon.

10c Howard Street

Millport, Isle Of Cumbrae, KA28 0AY

NEW TO MARKET ... First floor flat, 10c Howard Street, Millport KA28 0AY

PRICE: Offers Over £55,000

Competitively priced first floor two apartment flat within a two storey and attic flat a short distance to Millport Town centre and amenities. The bright flat comprises hall, bright living room, spacious kitchen with recessed sleeping area and shower room, communal garden and drying green at the rear. The flat forms an ideal first time buy/holiday home/buy to let in a quiet location and viewing is recommended. EER Rating Band D. Council tax Band A.

The seaside Town of Millport is just a 10 minute ferry journey from Largs and offers a variety of local services including Primary School, Health Centre, Cottage Hospital, Library, golf course, bowling green and award winning blue flag beach. Glasgow is around an hour away and there are regular public transport connections available from Largs to Glasgow, Ayr, Paisley and the West of Scotland.

Entrance

Hall

7'8 x 5'1 (2.34m x 1.55m)

Showerroom

5'9 x 4'4 (1.75m x 1.32m)

Living Room

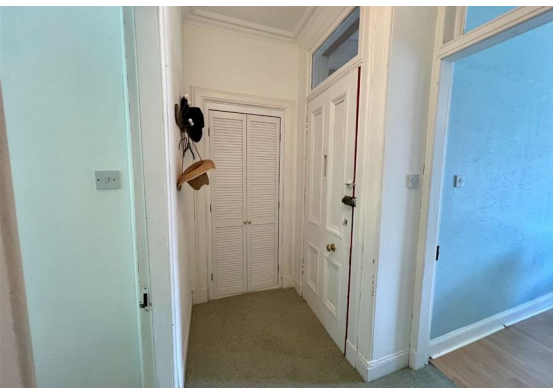
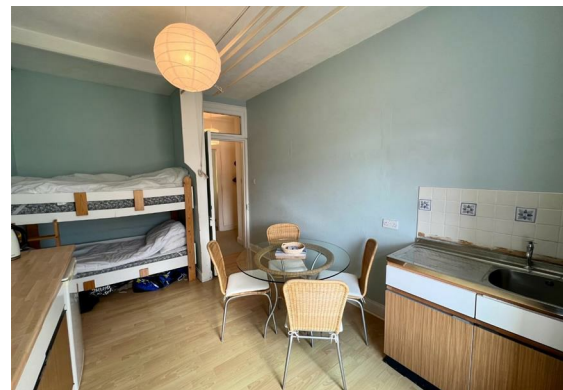
12'7 x 10'6 (3.84m x 3.20m)

Kitchen

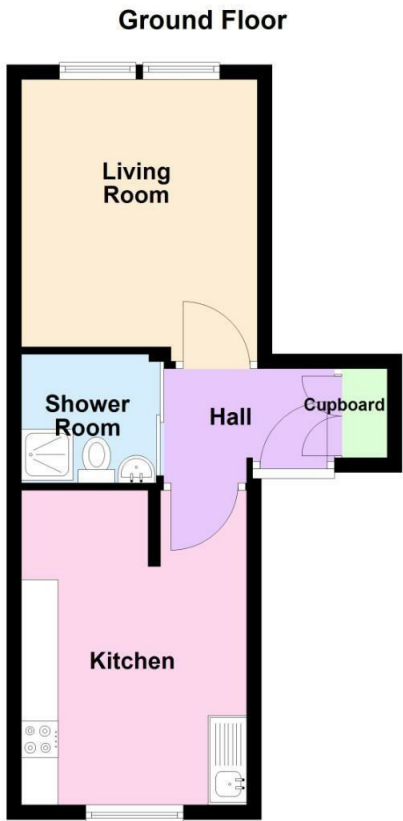
14'1 x 9'8 (4.29m x 2.95m)

Garden & Outbuildings





Floor Plan



Viewing

Please contact our Largs Office Office on 01475673663 if you wish to arrange a viewing appointment for this property or require further information.

These particulars, whilst believed to be accurate are set out as a general outline only for guidance and do not constitute any part of an offer or contract. Intending purchasers should not rely on them as statements of representation of fact, but must satisfy themselves by inspection or otherwise as to their accuracy. No person in this firms employment has the authority to make or give any representation or warranty in respect of the property.

Area Map



Energy Efficiency Graph

