



Top Floor Flat, 10 Guildford Street
Millport, Isle Of Cumbrae, KA28 0AE

Offers over £90,000



Top Floor Flat, 10 Guildford Millport, Isle Of Cumbrae, KA28 0AE

Top Floor Flat, 10 Guildford Street,
Millport, Isle of Cumbrae KA28 0AE
Price: Offers over £90,000 Council Tax
Band A. EER Rating E.

Top floor flat centrally located opposite the mini-golf in Millport Town Centre. This cosy flat offers a spacious and bright living and dining room offering expansive panoramic sea and Town views, shower room with corner shower cubicle, one bedroom with views to the rear gardens and Bute Terrace and main bedroom with far-reaching sea views. This well maintained property benefits from new double-glazed windows to sea-facing rooms and new front door within the last year. To the rear of the property are the communal gardens and drying green with communal outhouse. The property also includes a private cellar, first after the washhouse. This is an ideal holiday home/holiday let and viewing is highly recommended.

Access & Entrance

Hallway

14'5" x 6'2" at widest (4.39m x
1.88m at widest)

Living / Dining Room

21'2" x 8'7" (6.45m x 2.62m)

Galley Kitchen

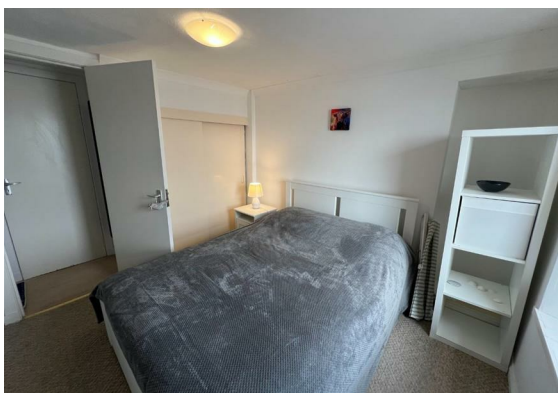
6'3" x 6'6" (1.91m x 1.98m)

Bedroom 1

9'5" x 9'5" (2.87m x 2.87m)

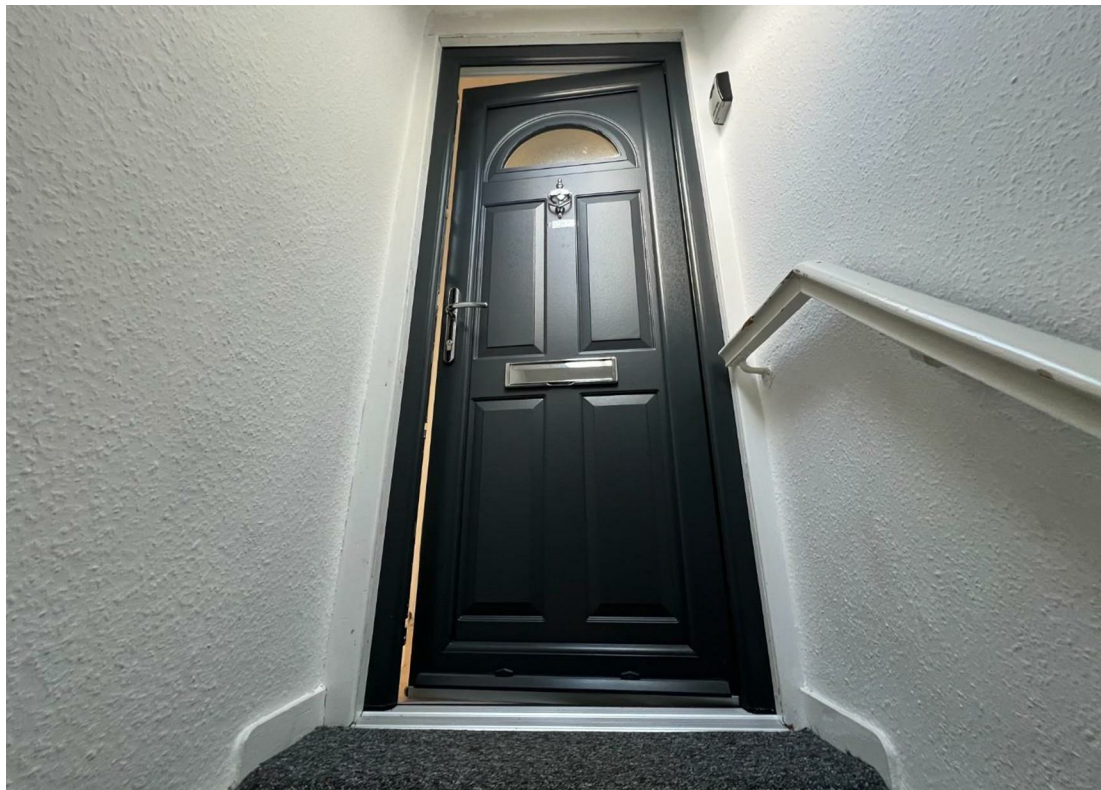
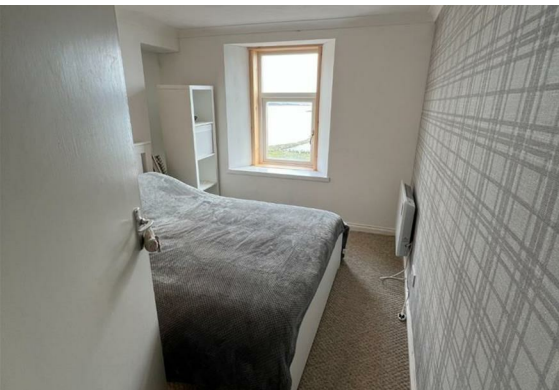
Bedroom 2

7'4" x 10'2" (2.24m x 3.10m)



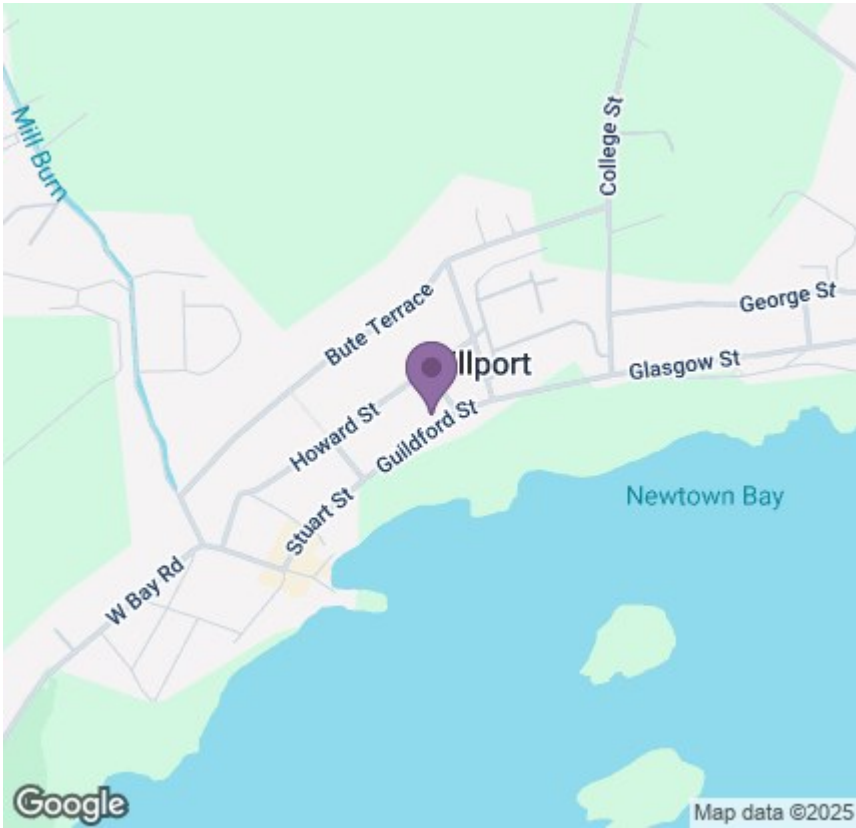


Shower Room
8'6" x 6'9" (2.59m x 2.06m)
Gardens & Outbuildings



Floor Plan

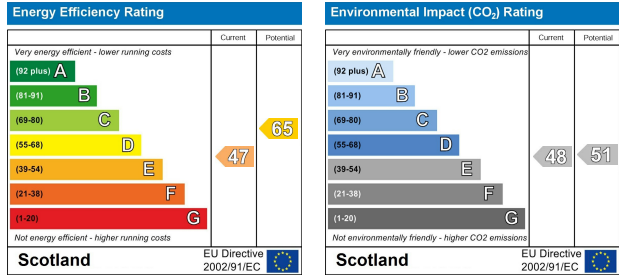
Area Map



Viewing

Please contact our Largs Office Office on 01475673663 if you wish to arrange a viewing appointment for this property or require further information.

Energy Efficiency Graph



These particulars, whilst believed to be accurate are set out as a general outline only for guidance and do not constitute any part of an offer or contract. Intending purchasers should not rely on them as statements of representation of fact, but must satisfy themselves by inspection or otherwise as to their accuracy. No person in this firms employment has the authority to make or give any representation or warranty in respect of the property.