



First Floor Flat 22D George Street
Millport, Isle Of Cumbrae, KA28 0BE

Offers over £65,000



First Floor Flat 22D George Millport, Isle Of Cumbrae, KA28 NRE

CLOSING. DATE. THURSDAY 10 APRIL AT
2PM

22D George Street, Millport KA28 OBE
Price: Offers Over £65,000 Council Tax
Band A EE Rating Band E.

Attractive well-presented and maintained first floor flat in sandstone tenement, minutes from Newton Beach, Garrison, Millport Town Centre and amenities. The spacious property comprises hall, bright open plan living room and kitchen, generous double bedroom, shower room with recess housing washing machine and storage. The property benefits from double glazing, ample storage, private cellar and well laid out communal rear garden. The flat forms an ideal first time buy/holiday home/buy to let and viewing is highly recommended.

Hall

12'05" x 7'84" (l-shaped longest & widest) (3.66m'1.52m" x 2.13m'25.60m" (l-shaped longest & w)

Bedroom

11'6" x 11'5" (3.35m'1.83m" x 3.35m'1.52m")

Living Room

9'9 x 9'9" (2.74m'2.74m x 2.74m'2.74m")





Kitchen

9'5" x 6'1" (2.74m'1.52m" x 1.83m'0.30m")

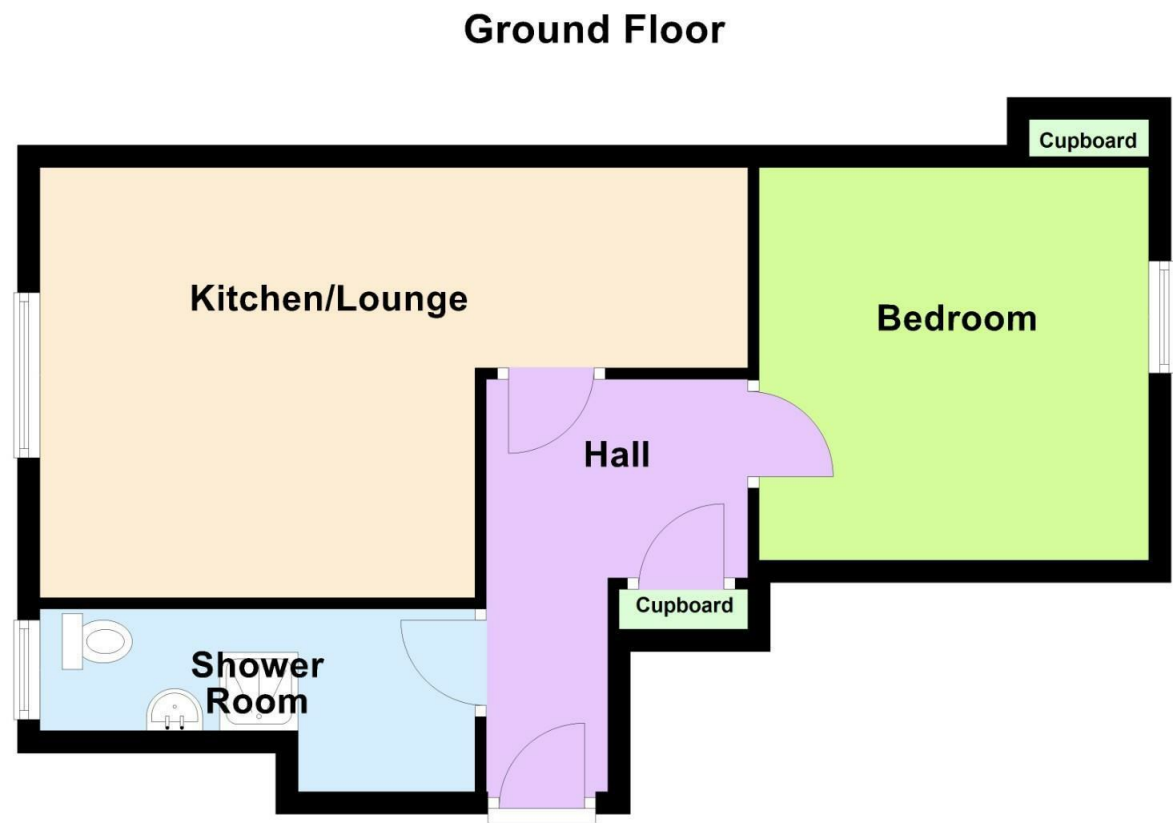
Shower Room

12'9" x 4'8" (3.66m'2.74m" x 1.22m'2.44m")

Gardens and Outbuildings



Floor Plan

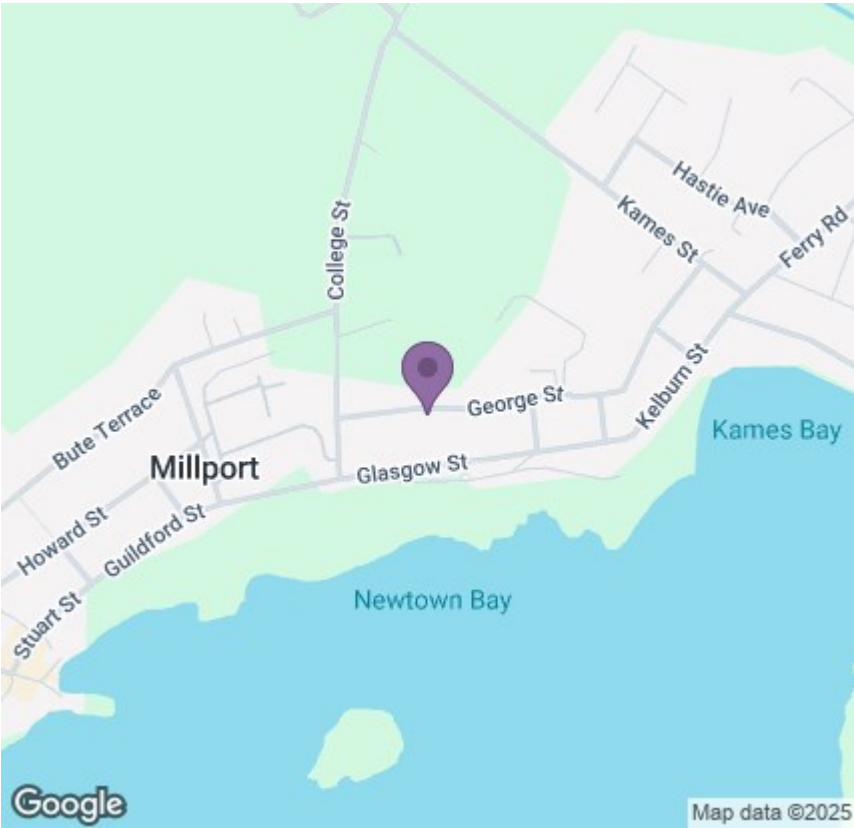


Viewing

Please contact our Largs Office Office on 01475673663 if you wish to arrange a viewing appointment for this property or require further information.

These particulars, whilst believed to be accurate are set out as a general outline only for guidance and do not constitute any part of an offer or contract. Intending purchasers should not rely on them as statements of representation of fact, but must satisfy themselves by inspection or otherwise as to their accuracy. No person in this firms employment has the authority to make or give any representation or warranty in respect of the property.

Area Map



Energy Efficiency Graph

