



**Seaview Cottage, 24 West Bay**  
Millport, KA28 0HA

**Offers over £65,000**





## Seaview Cottage, 24 West Millport, KA28 0HA

CLOSING DATE TUESDAY 8 APRIL AT. 12  
NOON

Seaview Cottage, 24 West Bay Road,  
Millport KA28 0HA, Isle of Cumbrae  
PRICE : Offers Over £65,000

This unique small cottage, located within the garden of Seaview House in the popular area of West Bay, is an ideal weekend retreat for those seeking a quiet space on the Isle of Cumbrae on the edge of the town of Millport. With its own porch entrance into a kitchen/dining space, with shower room and storage room on the main floor. Wooden steps lead up to a mezzanine with sleeping area, before a further step up into the living room space, with bay window and views out to the small private garden space and out to West Bay and the Firth of Clyde, with views over to the wee Eileans and mainland in distance. Sale of contents can be considered (including sofa bed). Council Tax Band: A EER Rating: F

**Porch**  
3'72" x 4'08" (0.91m x 1.42m)

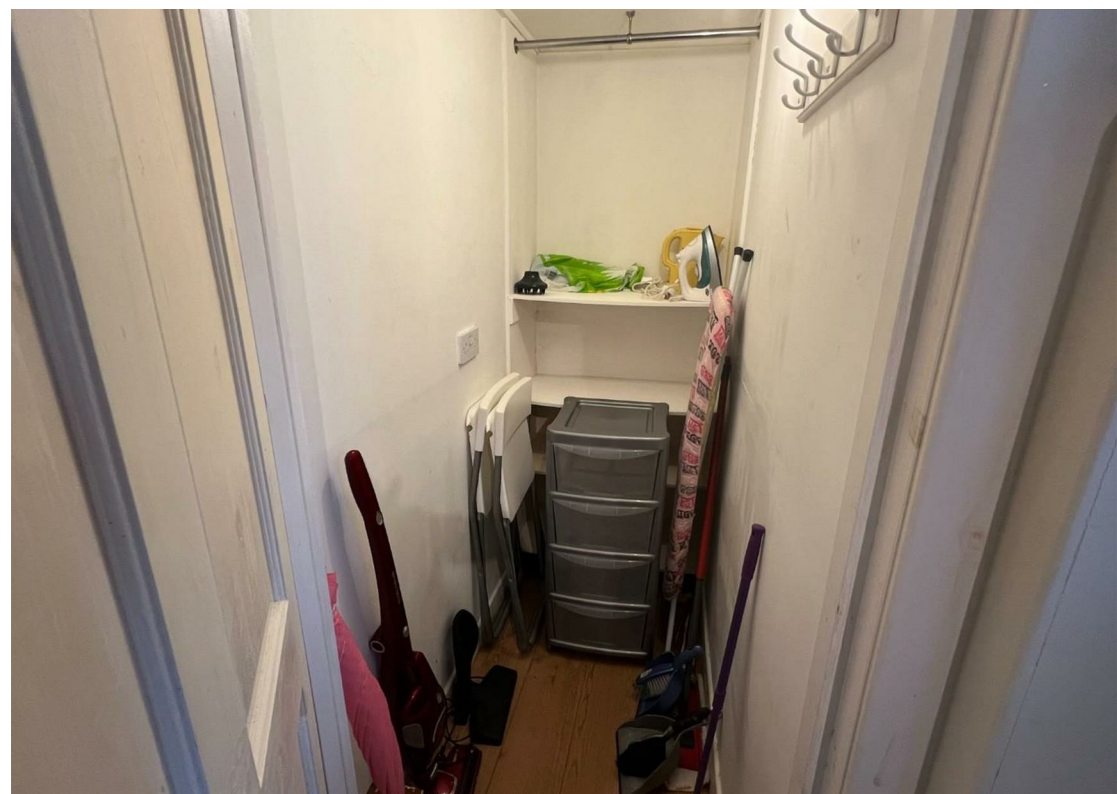
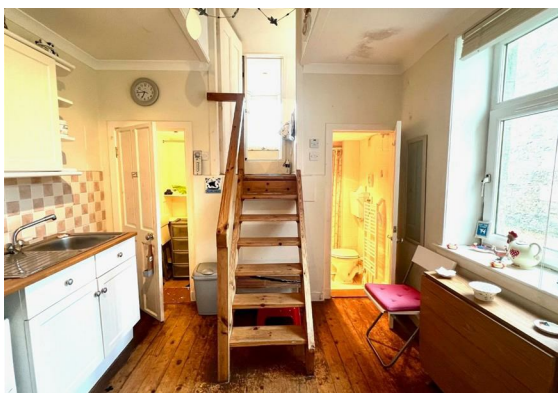
**Kitchen / Dining**  
11'20" x 9'91" (3.35m x 2.74m)

**Shower Room**  
6'04" x 4'54" (1.93m x 1.22m)

**Sleeping Area**  
6'16" x 10'36" (1.83m x 3.05m)

**Lounge**  
9'47" x 12'17" (2.74m x 3.66m)

**Garden and Outbuildings**







Floor Plan

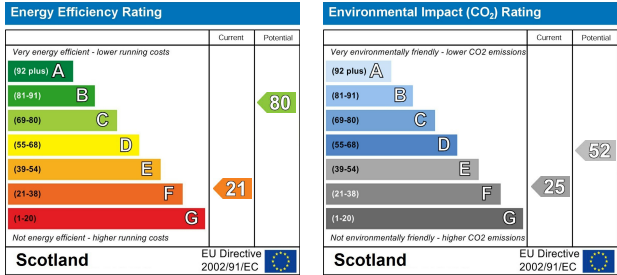
Area Map



Viewing

Please contact our Largs Office Office on 01475673663 if you wish to arrange a viewing appointment for this property or require further information.

Energy Efficiency Graph



These particulars, whilst believed to be accurate are set out as a general outline only for guidance and do not constitute any part of an offer or contract. Intending purchasers should not rely on them as statements of representation of fact, but must satisfy themselves by inspection or otherwise as to their accuracy. No person in this firms employment has the authority to make or give any representation or warranty in respect of the property.