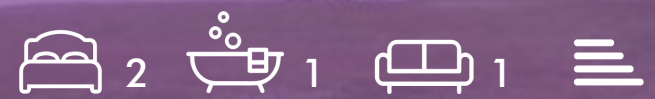




**13 Holmwood**  
, Largs, KA30 8RY

**Offers over £175,000**



## 13 Holmwood , Largs, KA30 8RY

Commanding breathtaking and uninterrupted sea views towards the Firth of Clyde including Arran and Great Cumbrae, 13 Holmwood is an impressively spacious two bedroomed flat positioned on the fourth floor of this super development and only meters from the waters edge.

The accommodation is very well maintained and consists of hallway, lounge opening up to the balcony, two double bedrooms, fitted kitchen and bathroom. There is excellent storage and brand new carpets throughout and the added convenience of a lift to all floors and secure entry for added security. Both bedrooms and the lounge have sea views and with parking and a garage this flat is perfect for many sectors of the market so early viewing is recommended to avoid disappointment.

Externally the garden grounds are beautifully maintained with a woodland backdrop to the back and the sea to the front. The town centre is a 15 minute walk away alternatively there is a regular bus service with a bus stop nearby.

**Hall**  
21'2 x 5' (6.45m x 1.52m)

**Lounge**  
17'5 x 19' (5.31m x 5.79m)

**Bedroom One**  
11' x 11' (3.35m x 3.35m)

**Bedroom Two**  
9' x 11' (2.74m x 3.35m)

**Kitchen**  
9'8 x 8'7 (2.95m x 2.62m)

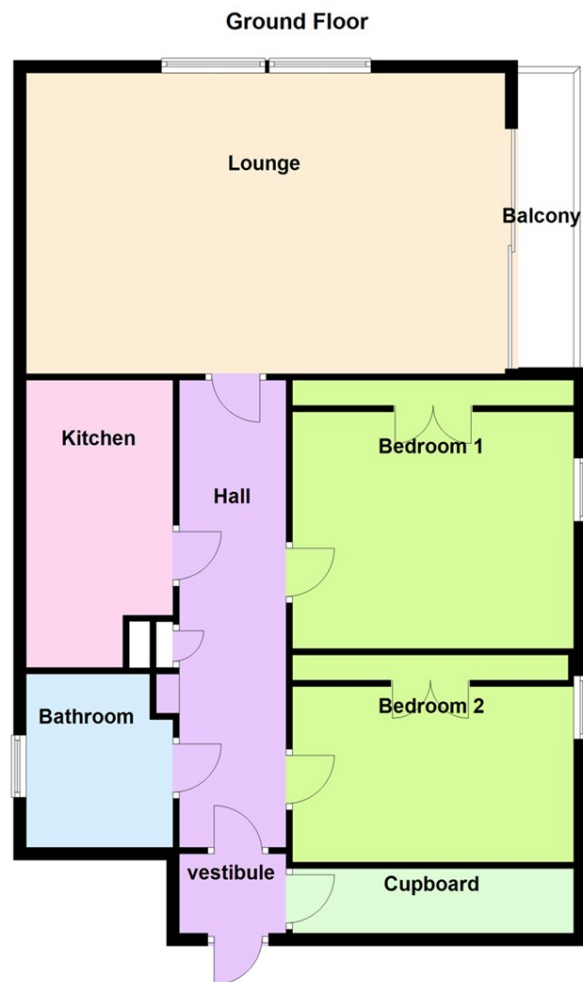




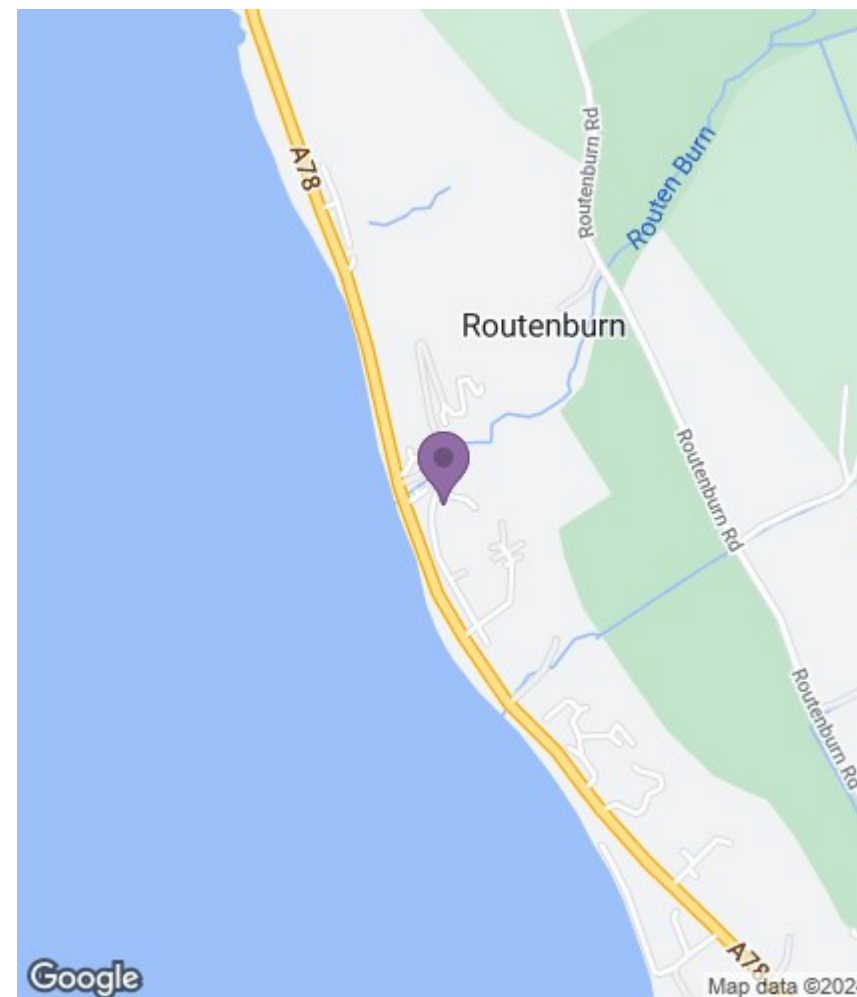
**Bathroom**  
6' x 7'10 (1.83m x 2.39m)  
**Outside**



## Floor Plan



## Area Map



## Viewing

Please contact our Largs Office on 01475673663 if you wish to arrange a viewing appointment for this property or require further information.

These particulars, whilst believed to be accurate are set out as a general outline only for guidance and do not constitute any part of an offer or contract. Intending purchasers should not rely on them as statements of representation of fact, but must satisfy themselves by inspection or otherwise as to their accuracy. No person in this firm's employment has the authority to make or give any representation or warranty in respect of the property.