




Andrew Pearce
PINNER

GAYTON COURT, GAYTON ROAD, HARROW, HA1 2HD

£425,000



This charming 1930s mansion-style first floor apartment, located in a well-maintained period block near Harrow Town Centre, offers a perfect blend of classic elegance and modern convenience.

Fully modernised in 2019, the apartment has been thoughtfully upgraded with new wiring, plumbing, heating, and flooring, while maintaining its period charm. The interiors are presented in fresh, neutral tone, with high quality fixtures and flooring.

The stylish and contemporary kitchen is a standout feature, boasting high-quality, in-vogue units, sleek granite countertops, and integrated appliances. The kitchen also features a water softener. The apartment's layout includes a generously sized front-facing living room that benefits from abundant natural light.

The large main bedroom provides a comfortable and peaceful retreat, while a good-sized second bedroom offers flexibility for use as a guest room or home office. The apartment is complemented by a beautifully designed three-piece bathroom, featuring contemporary tiled walls and flooring. Other benefits include gas central heating and sound insulating double glazing.

Outside, the apartment block is set amid attractive, well-kept communal grounds with manicured lawns, providing a pleasant outdoor space for residents. The development also includes residents' permit parking.

Located just a short walk from Harrow Town Centre, this property offers easy access to a variety of shopping and transport options. Harrow on the Hill Metropolitan Line station is within walking distance, providing excellent transport links to central London and beyond. This well-rounded property is ideal for those looking for a blend of period charm, modern comfort, and a prime location.

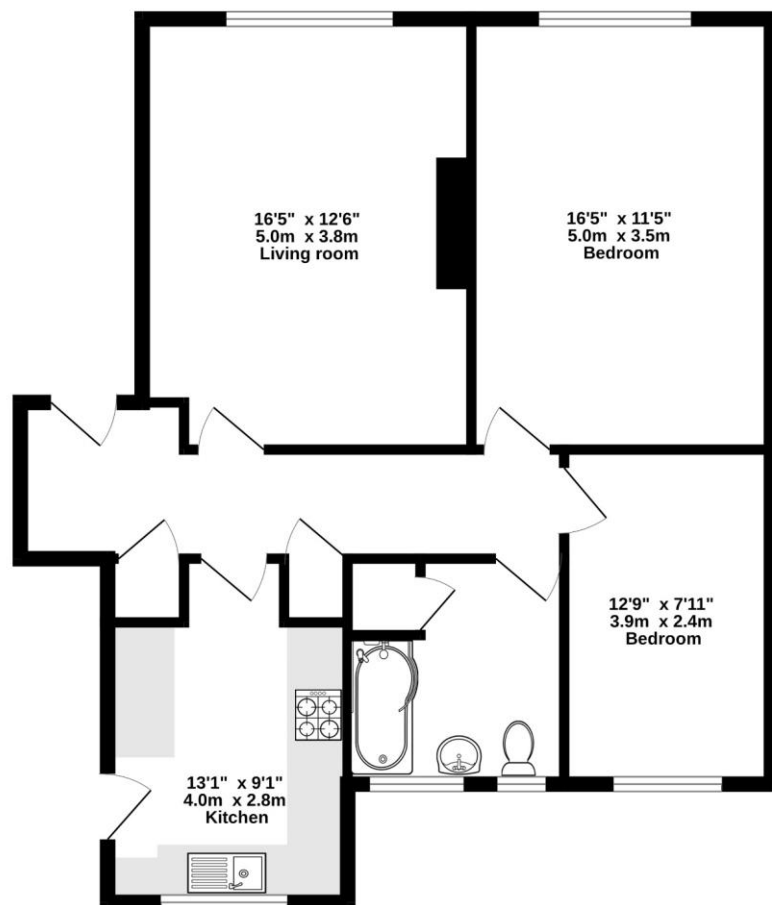
Service charge: £3360 approx.

Ground rent: £50 per annum

Lease years: 946



FIRST FLOOR
772 sq.ft. (71.7 sq.m.) approx.



TOTAL FLOOR AREA : 772 sq.ft. (71.7 sq.m.) approx.

Whilst every attempt has been made to ensure the accuracy of the floorplan contained here, measurements of doors, windows, rooms and any other items are approximate and no responsibility is taken for any error, omission or mis-statement. This plan is for illustrative purposes only and should be used as such by any prospective purchaser. The services, systems and appliances shown have not been tested and no guarantee as to their operability or efficiency can be given.
Made with Metropix 5.0.2025



