

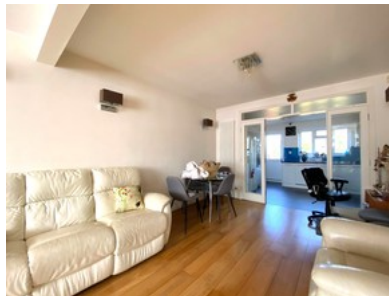
High Worple Rayners Lane






EST 2010
ANDREW PEARCE
— ESTATE AGENCY —



- ✓ Two Mins Walk To Station & High Street
- ✓ Rear Extension
- ✓ Downstairs W/c & Shower Room
- ✓ Garage
- ✓ Off-street Parking
- ✓ Four Piece Bathroom Suite
- ✓ Two Large Double Bedrooms
- ✓ Utility Room
- ✓ Metropolitan & Piccadilly Line
- ✓ Chain Free



Bedroom  3 Bathroom  2 Reception  2

Guide Price

£669,950