



Andrew Pearce
PINNER

DINGLES COURT, UXBRIDGE ROAD, PINNER, HA5 3RT

£155,000



This immaculately presented one bedroom second floor flat with Juliet balcony, is ideally located on the sought after Dingles Court development in Pinner. Set in beautiful communal gardens with playing fields, allotments, and ancient woodlands nearby.

Alongside its proximity to Harrow, Pinner and Watford you can enjoy a wide range of restaurants, shopping and recreational facilities. The Metropolitan Line is nearby and there are regular bus services for local travel.

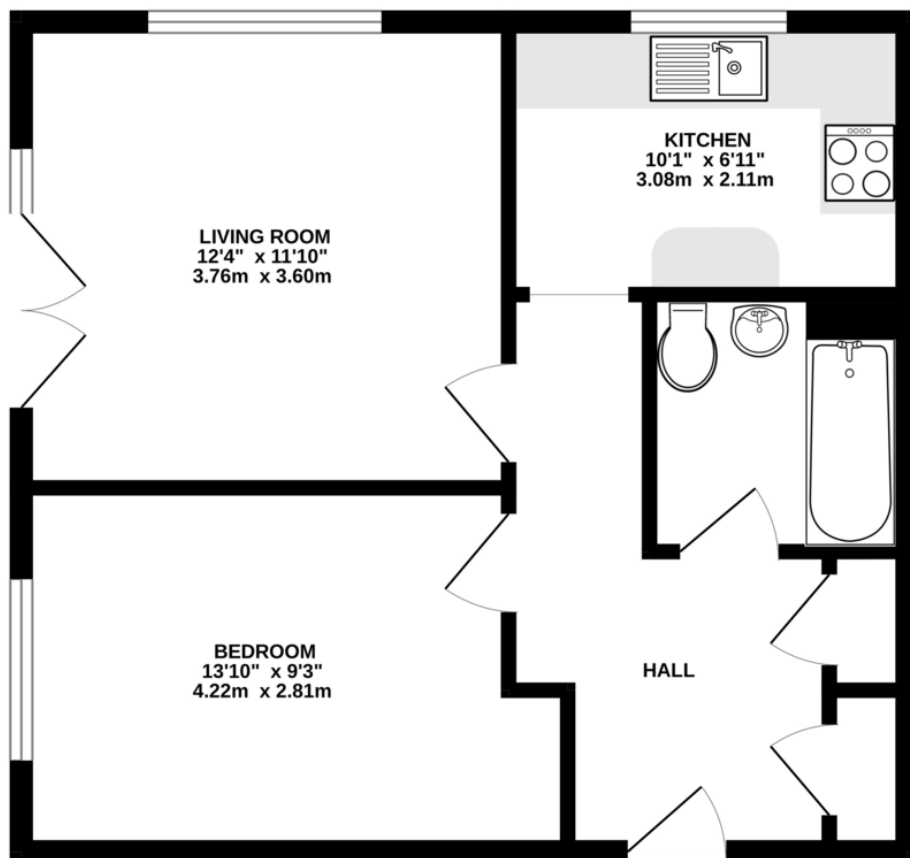
The development features non allocated off road parking, security entry-phone system with CCTV, pull cord alarm system and a professional onsite scheme manager during office hours. As well a lift to all floors.

Fixed price of £155,000 for a 70% Share.
For the over 55's

- Immaculately presented one bedroom apartment.
- Dual aspect allowing lots of natural light into the lounge.
- Recently fitted kitchen & bathroom.
- Refurbished throughout.
- Close to Pinner & Hatch End high streets.
- Over 55's only
- £155,000 for a 70% share



GROUND FLOOR
470 sq.ft. (43.7 sq.m.) approx.



TOTAL FLOOR AREA : 470 sq.ft. (43.7 sq.m.) approx.

Whilst every attempt has been made to ensure the accuracy of the floorplan contained here, measurements of doors, windows, rooms and any other items are approximate and no responsibility is taken for any error.

