



Plot 2, Sandybank View Stourbridge Road, Wootton, Bridgnorth, Shropshire, WV15 6EE

BERRIMAN
EATON

Plot 2, Sandybank View Stourbridge Road, Wootton, Bridgnorth, Shropshire, WV15 6EE

STABLES AND GRAZING LAND TO RENT BY SEPARATE AGREEMENT, UP TO 5 ACRES. PART EXCHANGE CONSIDERED.
Exclusive development of just four high quality new homes with outstanding far reaching countryside views.
Photographs are indicative of the house type shown and are for illustrative purposes only, finishes may vary.
Assisted Move or Part Exchange considered ask for details.

LOCATION

Situated only four miles from the historic market town of Bridgnorth with its wealth of facilities including supermarkets, individual shops, a large variety of restaurants, public houses and cafes. The town is also home to the Severn Valley Steam Railway, Cliff Railway linking High and Low Town and The Castle Walk offering superb river and valley views.

The town also caters for education for all age groups. There is also a medical centre and hospital.

DESCRIPTION

Sandybank comprises four high quality family homes with a wealth of versatile family accommodation set over three floors.

Each property is offered for sale with a 10 year build warranty also energy efficiency is a the heart of the homes design and construction and results in a predictive energy performance of XX.

Sandybank offers probably some of the finest panoramic views in Shropshire and is ideally placed to enjoy some spectacular sunsets.

ACCOMMODATION

Entrance Hall

Study/Playroom

Living room leading through double doors to

Superb Open Plan Kitchen/Dining/Family Space fitted to a high standard with bi-fold doors onto the garden

Separate Utility

Cloakroom

4 Double Bedrooms the master having bifold doors onto a balcony making the most of the fabulous views

2 En-suites

Family Bathroom

Second Floor

Double Bedroom with Ensuite

Loft Room and further storage room

The layout of the accommodation and its versatility is a major feature of the properties. The main Bedroom on the first floor would work equally as another sitting room with its balcony making the most of the far reaching views.

OUTSIDE

Large driveway parking.

Terraced Gardens with plenty of space for alfresco dining, entertaining and chilling with family and friends.

Only three properties are available for sale please give us a call to arrange a time to view the show home

Estate fees apply amount to be confirmed.

SERVICES

Mains electric mains water and shared private drainage

COUNCIL TAX BAND tbc – Shropshire

POSSESSION Vacant possession will be given on completion.

VIEWING Please contact the Worcester Office.

The property is FREEHOLD.

Broadband – Ofcom checker shows Standard

Mobile – Ofcom checker shows all four of the main suppliers cover the area

Ofcom provides an overview of what is available, potential purchasers should contact their preferred supplier to check availability and speeds.

<https://w3w.co/however.worker.alike>

Tettenhall Office

01902 747744

tettenhall@berrimaneaton.co.uk

Bridgnorth Office

01746 766499

bridgnorth@berrimaneaton.co.uk

Wombourne Office

01902 326366

wombourne@berrimaneaton.co.uk

Lettings Office

01902 749974

lettings@berrimaneaton.co.uk

Worcestershire Office

01562 546969

worcestershire@berrimaneaton.co.uk

www.berrimaneaton.co.uk

£695,000

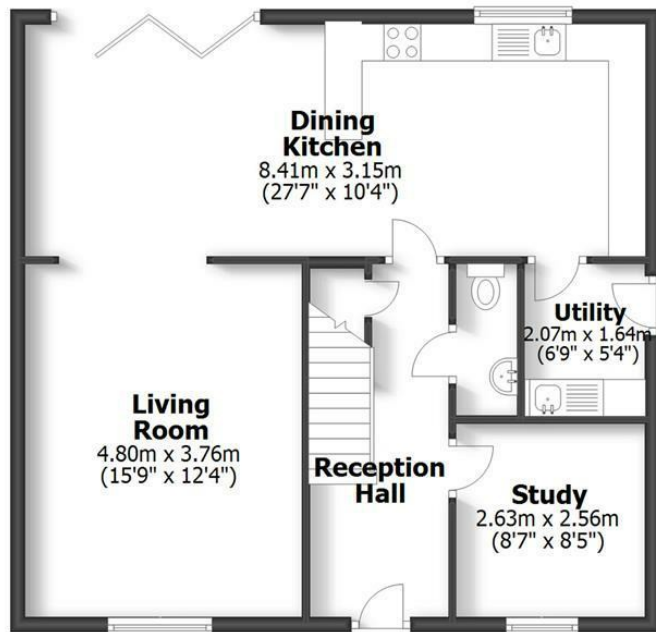
EPC: B

IMPORTANT NOTICE: Every care has been taken with the preparation of these Particulars but they are for general guidance only and complete accuracy cannot be guaranteed. Areas, measurements and distances are approximate and the text, photographs and plans are for guidance only. If there is any point which is of particular importance please contact us to discuss the matter and seek professional verification prior to exchange of contracts.

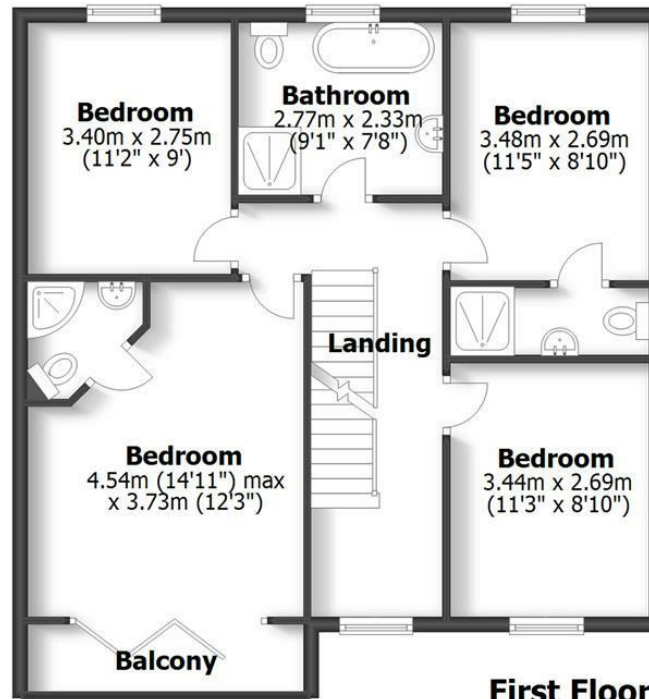


SANDY BANK
WOOTTON, BRIDGNORTH

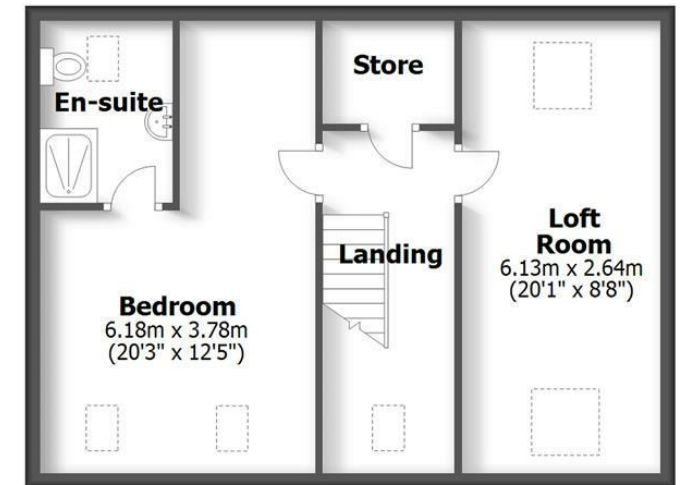
HOUSE: 186.9sq.m. 2,012.0sq.ft.
TOTAL: 186.9sq.m. 2,012.0sq.ft.
 INTERNAL FLOOR AREAS ARE APPROXIMATE
 FOR GENERAL GUIDANCE ONLY - NOT TO SCALE
 POSITION & SIZE OF DOORS, WINDOWS, APPLIANCES
 AND OTHER FEATURES ARE APPROXIMATE



Ground Floor



First Floor



Second Floor

