



166 Fylde Road, Southport
Southport


**NICHOLLS
& BARNES**
ESTATE AGENTS

In Excess of **£315,000**

166 Fylde Road

Southport

Delightful detached bungalow with three double bedrooms, large lounge, dining room, spacious kitchen, and shower room. Extensive corner plot with contemporary paved landscaping, enclosed rear garden and detached garage. No onward chain for a stress-free move.

Council Tax band: D

Tenure: Freehold

- Detached Bungalow
- Three Double Bedrooms
- Two Reception Rooms
- Modern Shower Room
- Enclosed Rear Garden
- Paved Landscaped Gardens
- Detached Single Garage
- Extensive Corner Plot
- Desirable Residential Location
- No Chain



GARDEN

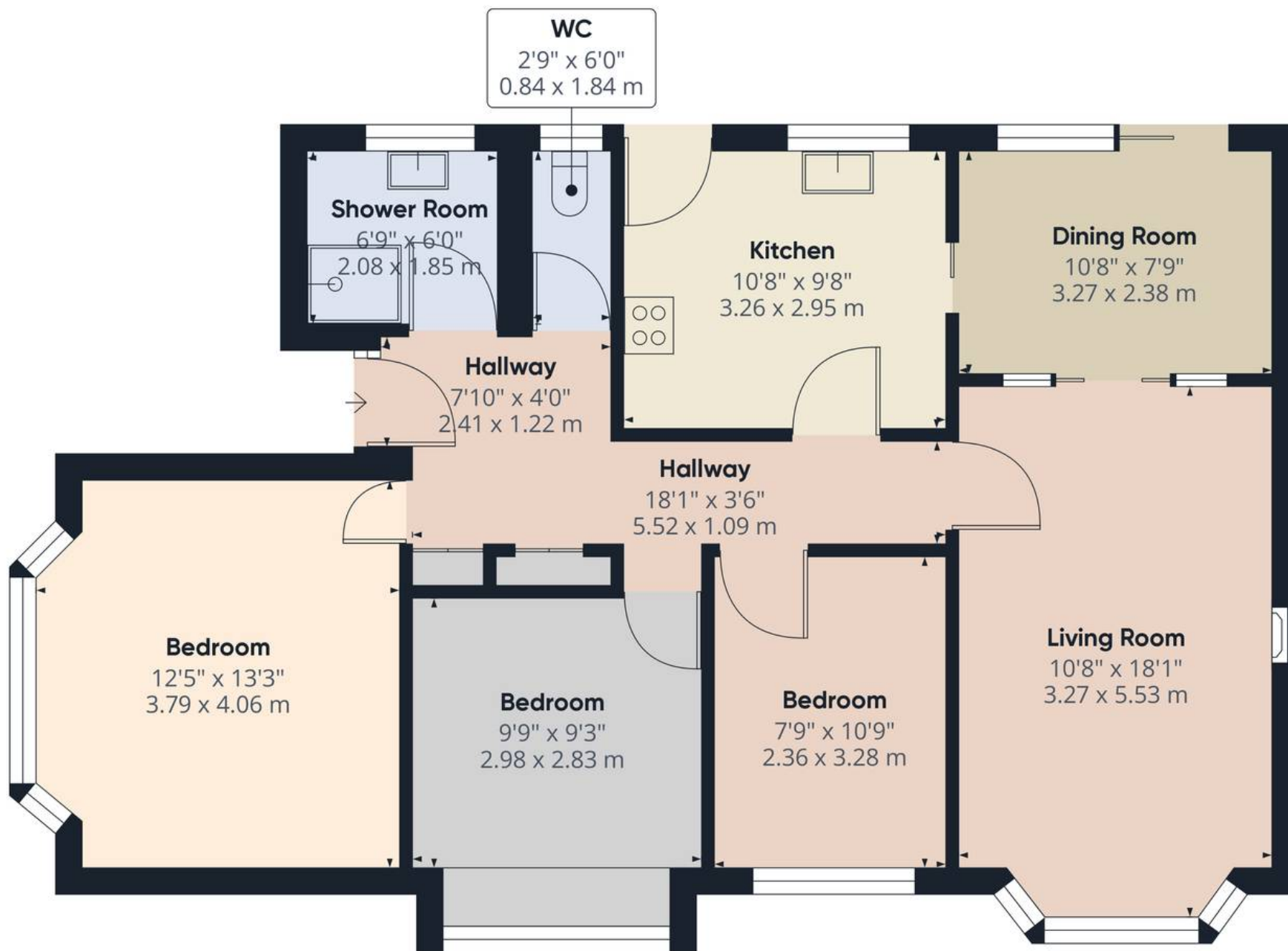
DRIVEWAY

2 Parking Spaces

GARAGE

Single Garage





Approximate total area⁽¹⁾

904.17 ft²
84 m²

(1) Excluding balconies and terraces

While every attempt has been made to ensure accuracy, all measurements are approximate, not to scale. This floor plan is for illustrative purposes only.

Calculations are based on RICS IPMS 3C standard.

GIRAFFE360



Nicholls and Barnes

43 Hoghton Street, Southport - PR9 0PG

01704 541 414 • sales@nichollsandbarnes.net • nichollsandbarnes.net



**NICHOLLS
& BARNES**

ESTATE AGENTS

