



20 Burlington Road, Southport
Southport


**NICHOLLS
& BARNES**
ESTATE AGENTS

In Excess of £675,000

20 Burlington Road

Southport

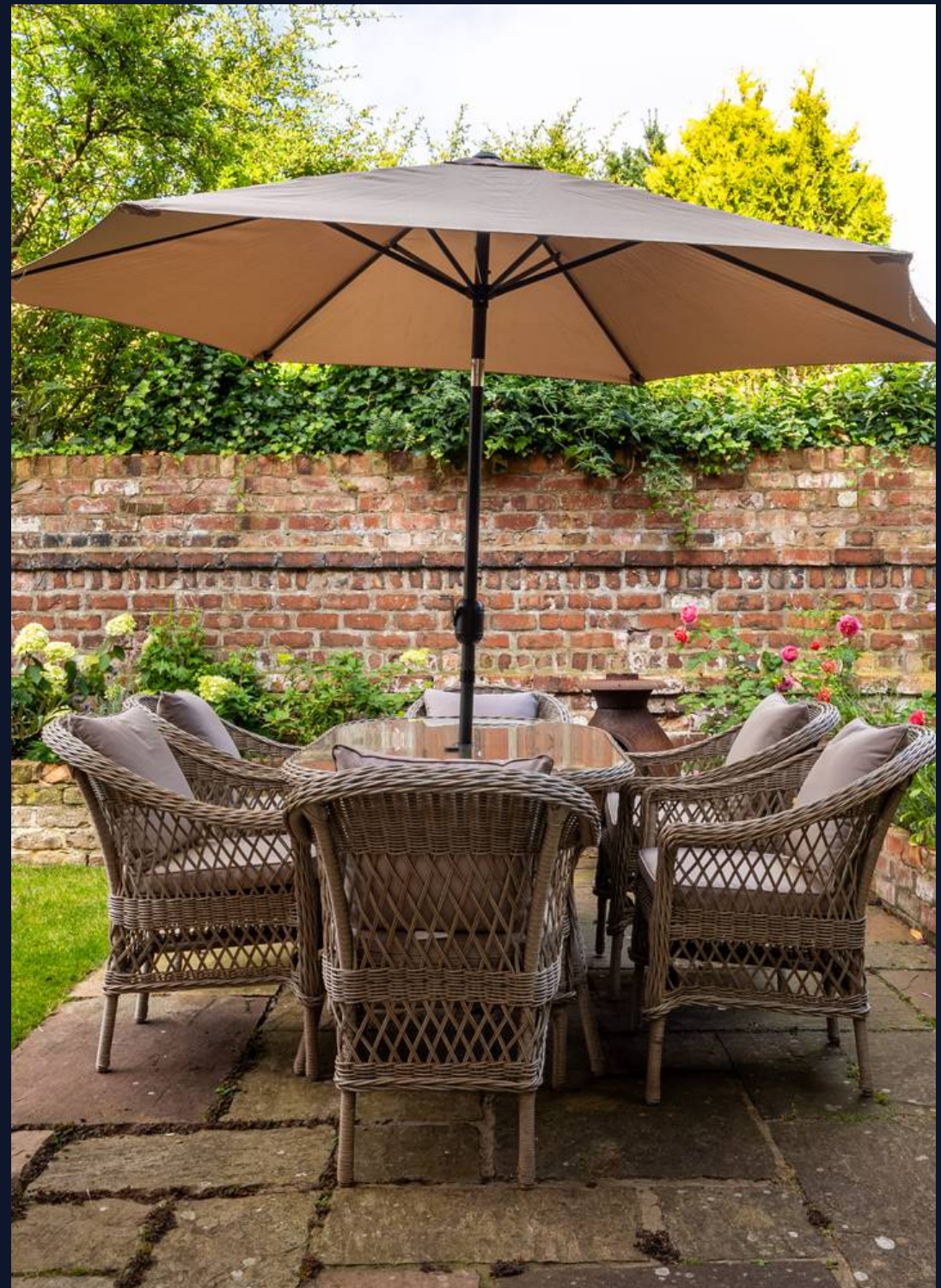
Council Tax band: D

Tenure: Freehold

EPC Energy Efficiency Rating: E

EPC Environmental Impact Rating: F

- Exquisite Six Bedroom Family Home
- Three Floors of Accommodation
- Elegantly Decorated
- Open Plan Kitchen Diner
- Downstairs Shower Room
- Utility Room
- Period Features Throughout
- Private Rear Garden & Patio
- Sought After Location
- Off-Street Parking

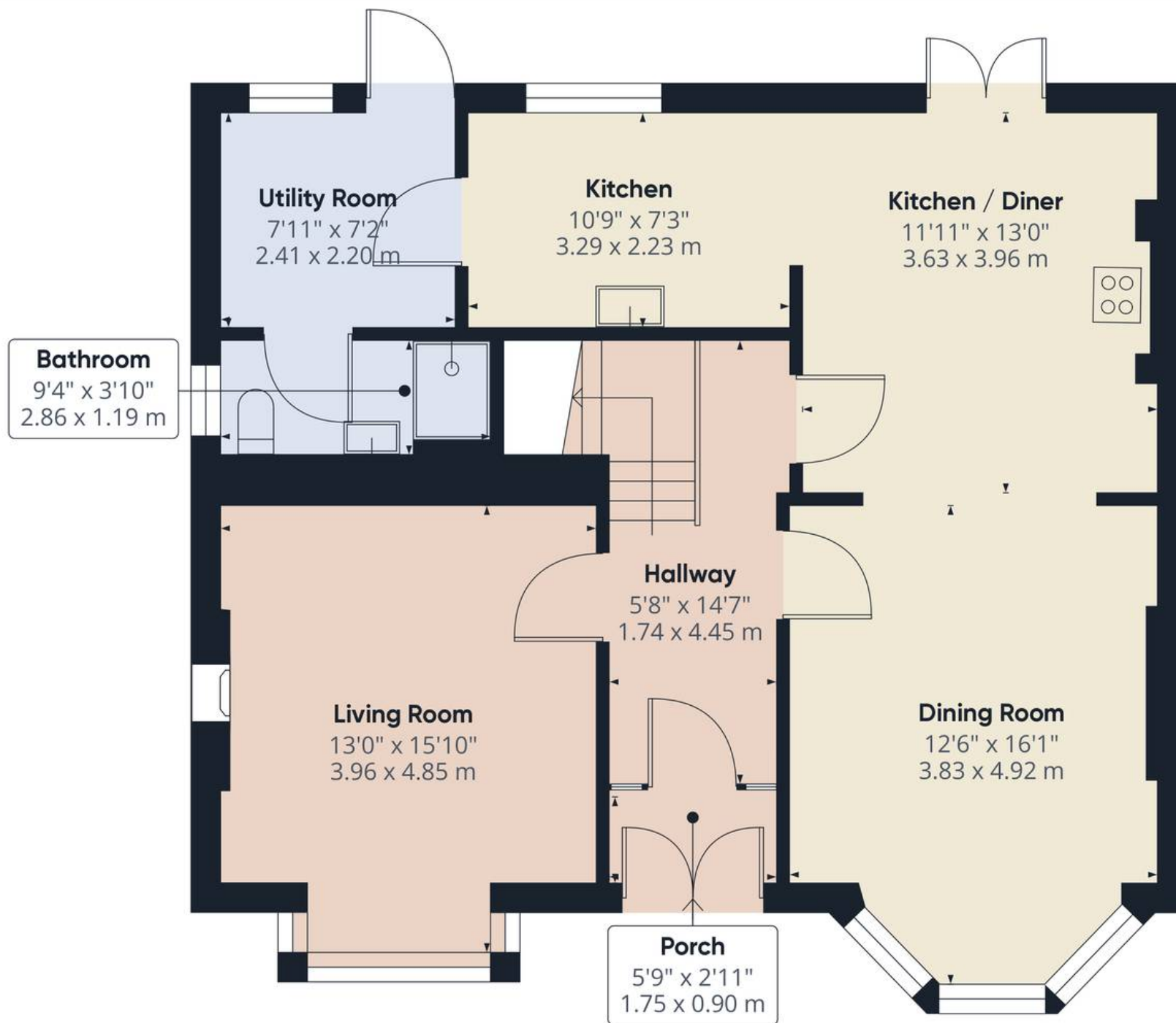


REAR GARDEN

OFF STREET

2 Parking Spaces





Floor 0

Approximate total area⁽¹⁾

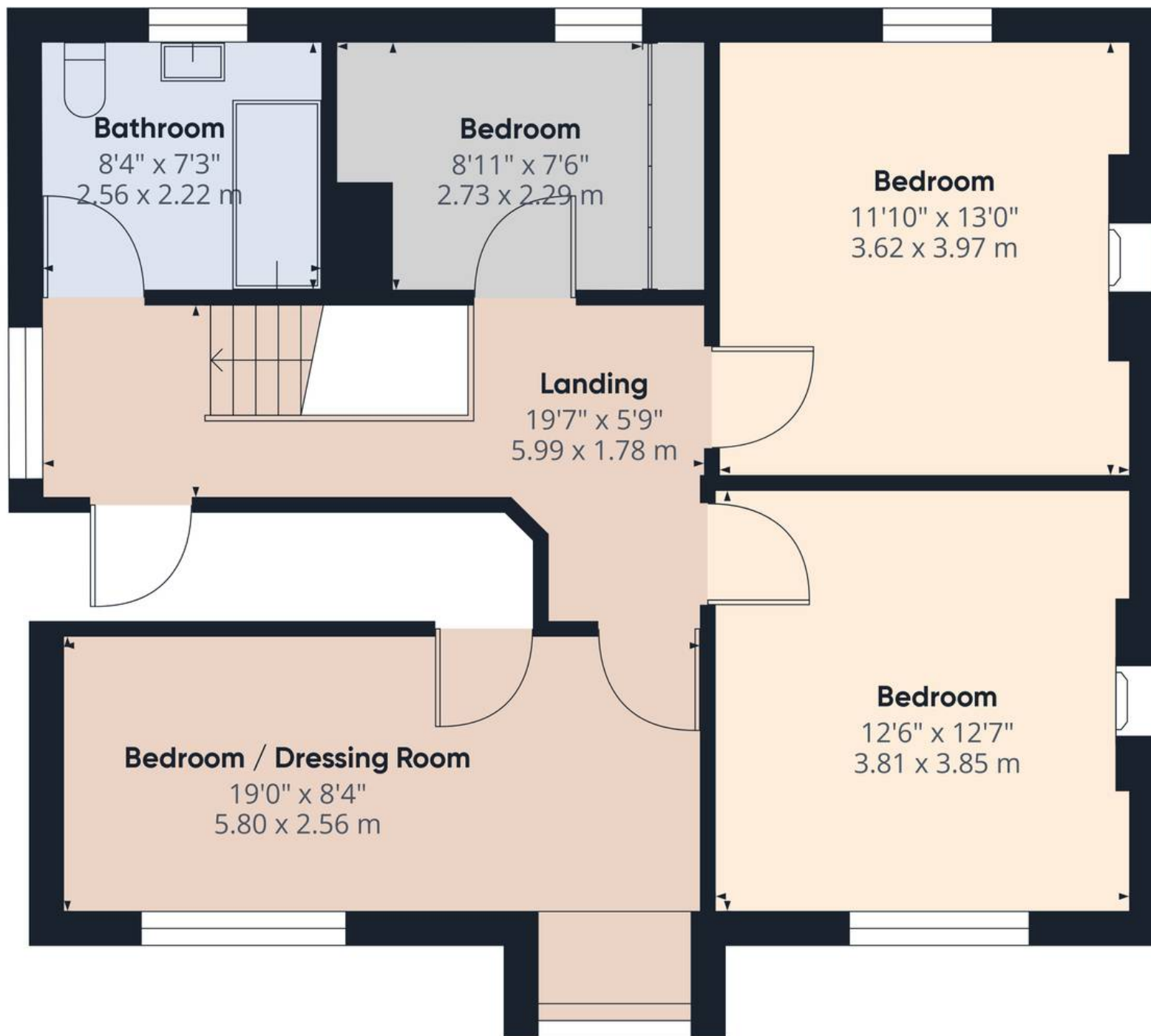
837.76 ft²

77.83 m²

(1) Excluding balconies and terraces

While every attempt has been made to ensure accuracy, all measurements are approximate, not to scale. This floor plan is for illustrative purposes only.

GIRAFFE360



Floor 1

Approximate total area⁽¹⁾

733.78 ft²

68.17 m²

(1) Excluding balconies and terraces

While every attempt has been made to ensure accuracy, all measurements are approximate, not to scale. This floor plan is for illustrative purposes only.

GIRAFFE360



Nicholls and Barnes

Nicholls & Barnes Estate Agents, 43 Hoghton Street, Southport PR9 0PG

01704 541 414 • sales@nichollsandbarnes.net • nichollsandbarnes.net



**NICHOLLS
& BARNES**

ESTATE AGENTS

