



 **2**
Bedrooms

 **1**
Bathroom



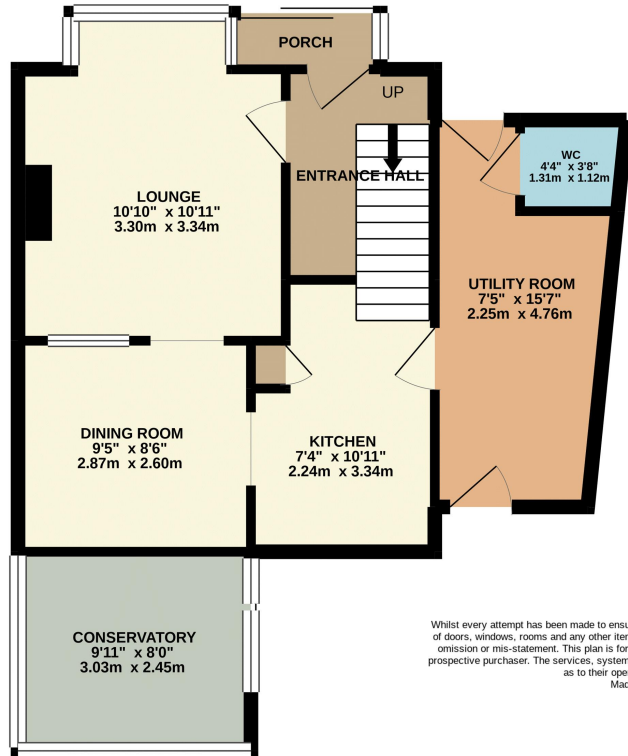
A well presented end of terrace house with lounge, dining room, kitchen, large utility, 2 double bedrooms and a shower room. The property offers plenty of parking to the front and an easily maintained rear garden to the rear.

- End of Terrace House
- 2 Bedrooms
- EPC Rating D | Council Tax Band B
- 2 Receptions
- Parking & Garden
- 1 MONTHS RENT & 1 MONTHS RENT AS DEPOSIT UPFRONT

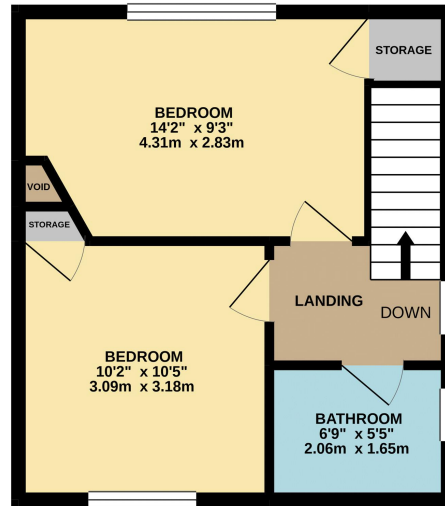




GROUND FLOOR



1ST FLOOR



Whilst every attempt has been made to ensure the accuracy of the floorplan contained here, measurements of doors, windows, rooms and any other items are approximate and no responsibility is taken for any error, omission or mis-statement. This plan is for illustrative purposes only and should be used as such by any prospective purchaser. The services, systems and appliances shown have not been tested and no guarantee as to their operability or efficiency can be given.
Made with Metropix ©2021

Score	Energy rating	Current	Potential
92+	A		
81-91	B		87 B
69-80	C		
55-68	D	68 D	
39-54	E		
21-38	F		
1-20	G		

