



4

Bedrooms



1

Bathroom







We are delighted to present this attractive stone terrace house located in one of the most requested Milton roads and situated opposite Ashcombe Park. The property boasts spacious family accommodation which can only be fully appreciated by viewing internally. The accommodation briefly comprises; entrance hall, lounge, sitting room/bedroom, large kitchen/dining room with utility room off. Upstairs there are 4 bedrooms and a family bathroom. There is ample parking in front of the property plus front and rear gardens.

The house is opposite Ashcombe park, offering playing / recreational space - perfect for dog walkers. Ashcombe Park Road is located between Milton and Weston-Super-Mare town centre and boasts a host of amenities including multiple shops and cafes nearby, including a Co-op within walking distance. Milton train station is nearby, offering viable transport options for commuters to Bristol etc. There is a bus stop at the end of the road with active routes across W-S-M, as well as a direct route to the popular seaside town centre.

This attractive 4-bedroom property is sure to get the phones ringing!



- Older Style Terrace
- Council Tax Band D
- Popular Road
- Ample Off Street Parking
- EPC Rating E
- Great Family Home

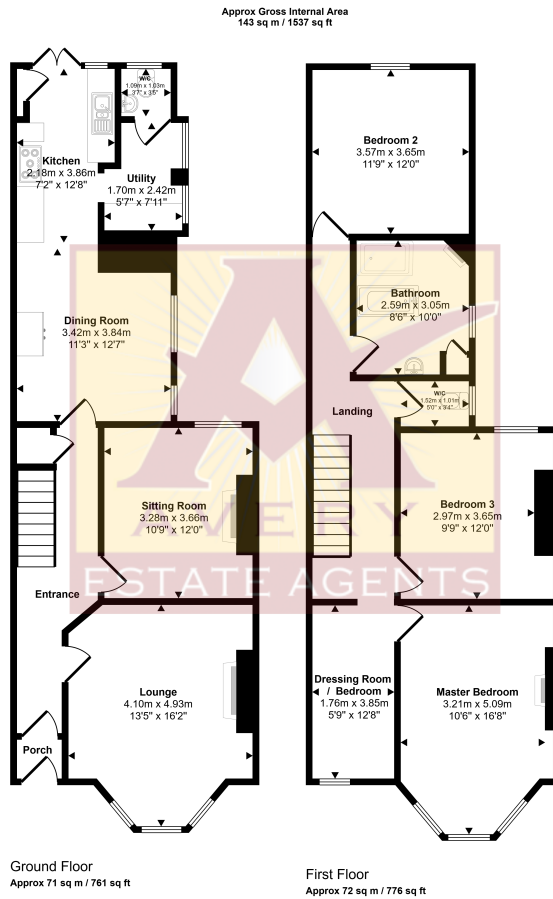













This floorplan is only for illustrative purposes and is not to scale. Measurements of rooms, doors, windows, and any items are approximate and no responsibility is taken for any error, omission or mis-statement. Icons of items such as bathroom suites are representations only and may not look like the real items. Made with Made Snappy 360.

Energy Efficiency Rating		
	Current	Potential
Very energy efficient - lower running costs		
(92+) <b>A</b>		<b>82</b>
(81-91) <b>B</b>		
(69-80) <b>C</b>		
(55-68) <b>D</b>		
(39-54) <b>E</b>	<b>41</b>	
(21-38) <b>F</b>		
(1-20) <b>G</b>		
Not energy efficient - higher running costs		
England, Scotland & Wales		EU Directive 2002/91/EC 

Address: Milton, BS23

