



## WHITE HOUSE FARM, THE GAREY

RAMSEY, IM7 2EE

**£795,000**  
FREEHOLD

A delightful detached Manx Extended Cottage Sat In The Picturesque Quiet Rural Area of The Garey just outside of Ramsey. This 4 Bed Property Sits in 6 Acres of Agriculture Land



- Beautiful Detached 4 Bed 2 Bathroom Manx Cottage
- Sat In 6 Acres of Flat Useable Land With Water To Them
- Lovely Sunny Conservatory that leads to Side Patio
- Oil Fired Central Heating
- Suits Generational Living With Separate Annex or can easily be combined
- Large Garden Area
- Large Freestanding Area Ideal For Patio, Large Barn or Further Sheds
- Plenty of Off Road Parking



### Overview

White House Farm is a 200 Year old Brick Built Manx Cottage Sat in 6 Acres of Flat Agriculture Land in the lovely rural setting of The Garey just a short distance from Ramsey Town. This delightful detached house offers a unique blend of historical character and modern living. With its origins dating back to before 1900, the property exudes a sense of timeless elegance, making it a truly special home.

Downstairs Boasts a spacious sitting room that has double doors leading to a small modern kitchen. Also a set of double doors lead to a lovely sunny conservatory that allows you to step out onto a good sized patio area. A second lounge can be used as a snug at the front of the cottage. Upstairs boasts 3 good sized Double Bedrooms and a Modern Bathroom.

This property benefits from the current extension that has a kitchen, 2 further reception rooms with stairs that lead up to a further double bedroom with an en-suite toilet. This extension is accessed currently from downstairs but easily accessible fort possible conversion to integrate from upstairs as well.

This charming home presents a wonderful opportunity for anyone looking to embrace the

unique lifestyle that the Isle of Man has to offer. With its historical charm and spacious living areas, this property is sure to capture the hearts of prospective buyers. Do not miss the chance to make this enchanting house your new home.

### Additional Information

The Land is primarily flat and there is plenty of space to erect stabling as land suitable for horses

Please call 685611 for current rates

School Catchment Area - Ramsey Grammar School

Inclusions - To Be Advised

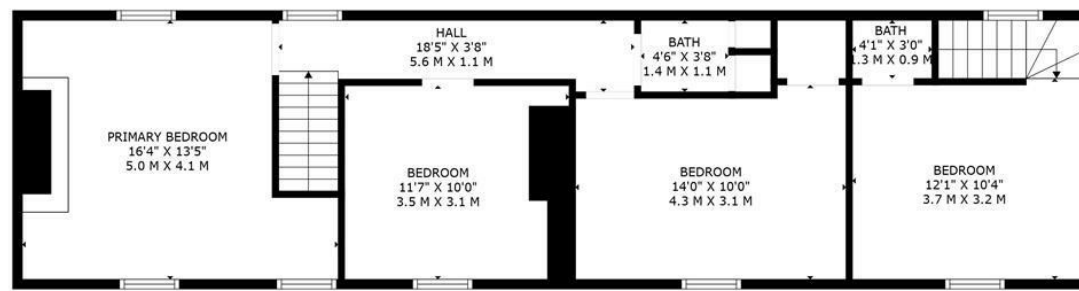
Oil Fired Central Heating

Septic Tank

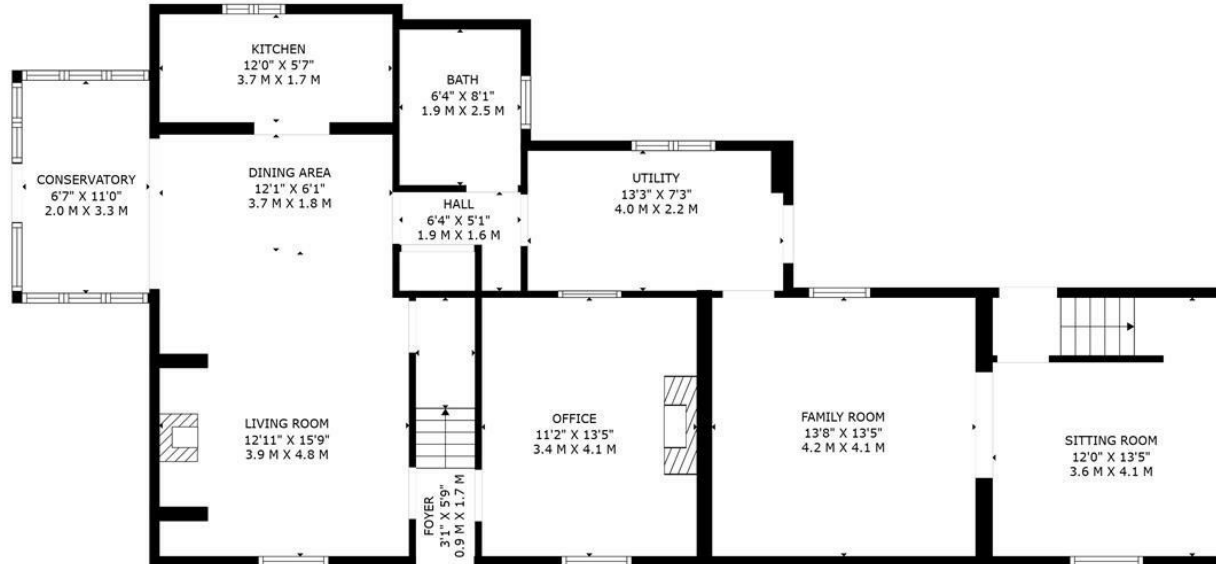
### Directions

Travelling out of Ramsey on Bowring Road towards the Grove Museum. Take your first left onto Jurby Road. Continue on this road for approximately 1 1/4 Miles then turn left at the signpost "Garey Ford" Follow the road round and approx half a mile down the road just past the newbuild property White House Farm can be found on your right.





FLOOR 2



FLOOR 1



**TOTAL: 1917 sq. ft, 178 m2**  
 FLOOR 1: 1181 sq. ft, 110 m2, FLOOR 2: 736 sq. ft, 68 m2

FLOOR PLAN CREATED BY INVISION MEDIA & MARKETING. MEASUREMENTS DEEMED HIGHLY RELIABLE BUT NOT GUARANTEED.