

5, PERWICK ROAD

PORT ST MARY, IM9 5PA

£750,000
FREEHOLD

An opportunity to purchase an extremely Spacious Detached property having uninterrupted panoramic Sea Views. Located in Pt St Mary, a short distance from all village amenities.



- Unique Detached Property having Uninterrupted Panoramic Sea and Coastal Views, Some Modernisation Required.
- Very Spacious, Light Entrance Hall. Cloakroom
- Large Sitting Room with Direct Sea Views, Good Size Balcony
- Fitted Kitchen with Two Dining Areas and Sea Views
- Master Bedroom having Sea Views with Large En-Suite, Two Further Ground Floor Bedrooms with Showers
- Lower Ground Floor with Dining Room, Bedroom and a Further Room/Potential En-Suite
- Double Glazed, Oil Central Heating
- Double Garage, Large Parking Area
- Old Swimming Pool Decked Over with Changing Area



Overview

Situated in one of the most desirable roads on the island, used to be called 'Millionaires row' the property overlooks a golf course and direct sea and coastal views yet a short distance to local schools, shops, restaurants and Pt St Mary amenities. A very spacious family residence just waiting for some tender loving care to return it to its former glory

Additional Information

- Oil Central Heating
- Double Glazed
- Inclusions Tba

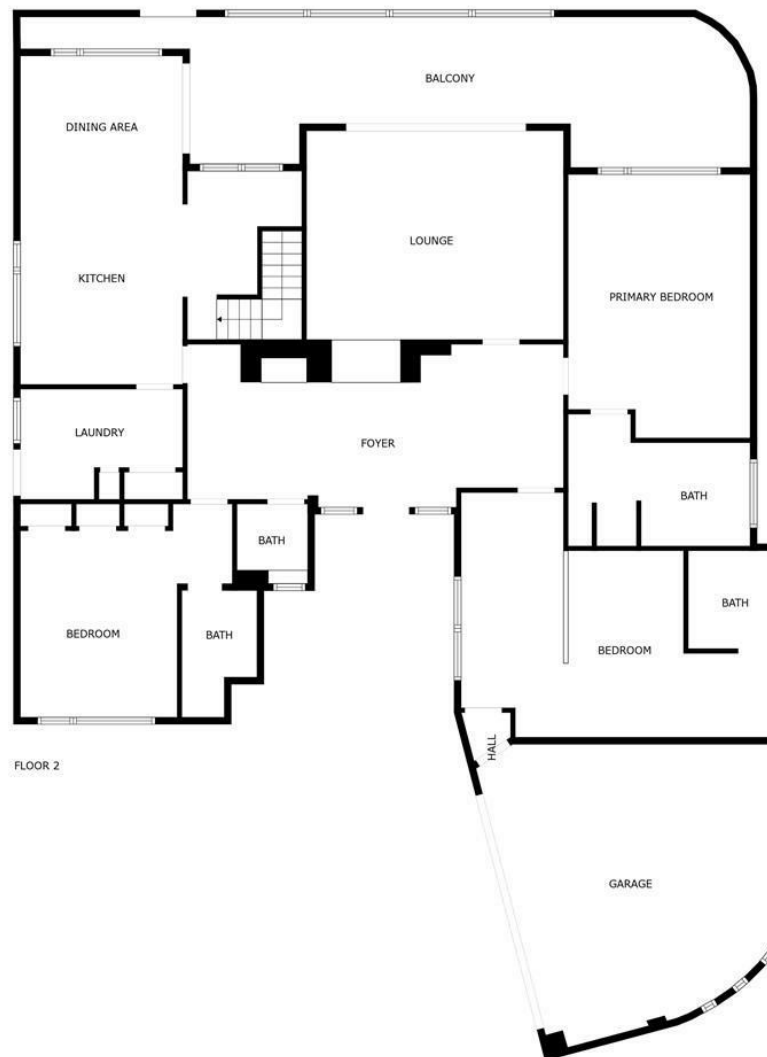
Directions

From Four roads roundabout, turn towards Pt St Mary, travelling through the village, past the school on the right onto the 'one way system' bearing right and following the road right up the hill then turning left on to Perwick Road where Shearwater, number 5 will be found on the left hand side, just past the empty plot.





FLOOR 1



FLOOR 2



FLOOR PLAN CREATED BY INVISION MEDIA & MARKETING. MEASUREMENTS DEEMED HIGHLY RELIABLE BUT NOT GUARANTEED.



Head Office Lettings
64 Duke Street
Douglas
Isle Of Man
IM1 2AR

Agents Note: Whilst every care has been taken to prepare these particulars, they are for guidance purposes only. All measurements are approximate and are for general guidance purposes only and whilst every care has been taken to ensure their accuracy, they should not be relied upon and potential buyers/tenants are advised to recheck the measurements