

FLAT 71 SLIEAU WHALLIAN PARK

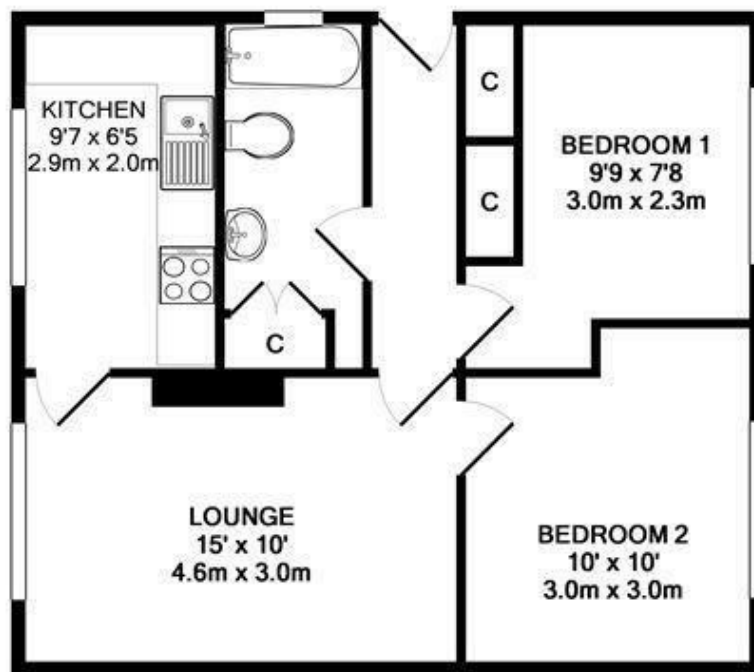
ST JOHNS, IM4 3JG

£143,000

This flat presents an excellent opportunity for those looking to settle in a serene environment without compromising on accessibility. Whether you are a first-time buyer or seeking a rental opportunity, this property is sure to impress. Embrace the charm of St Johns and make this flat your new home.

 **Plum
Properties**

T: 01624 820600
E: hello@plumproperties.im
W: www.plumproperties.im



Whilst every attempt has been made to ensure the accuracy of the floor plan contained here, measurements of doors, windows, rooms and any other items are approximate and no responsibility is taken for any error, omission, or mis-statement. This plan is for illustrative purposes only and should be used as such by any prospective purchaser. The services, systems and appliances shown have not been tested and no guarantee as to their operability or efficiency can be given
Made with Metropix ©2011



T: 01624 820600
E: hello@plumproperties.im
W: www.plumproperties.im

Head Office Lettings
1 Athol Street
Douglas
Isle Of Man
IM1 1LD

01624 820600
hello@plumproperties.im
<http://www.plumproperties.im>

Agents Note: Whilst every care has been taken to prepare these particulars, they are for guidance purposes only. All measurements are approximate and are for general guidance purposes only and whilst every care has been taken to ensure their accuracy, they should not be relied upon and potential buyers/tenants are advised to recheck the measurements