



Plum  
Properties



Plum  
Properties



Plum  
Properties

## 2 PLEASINGTON VILLAS PEEL ROAD

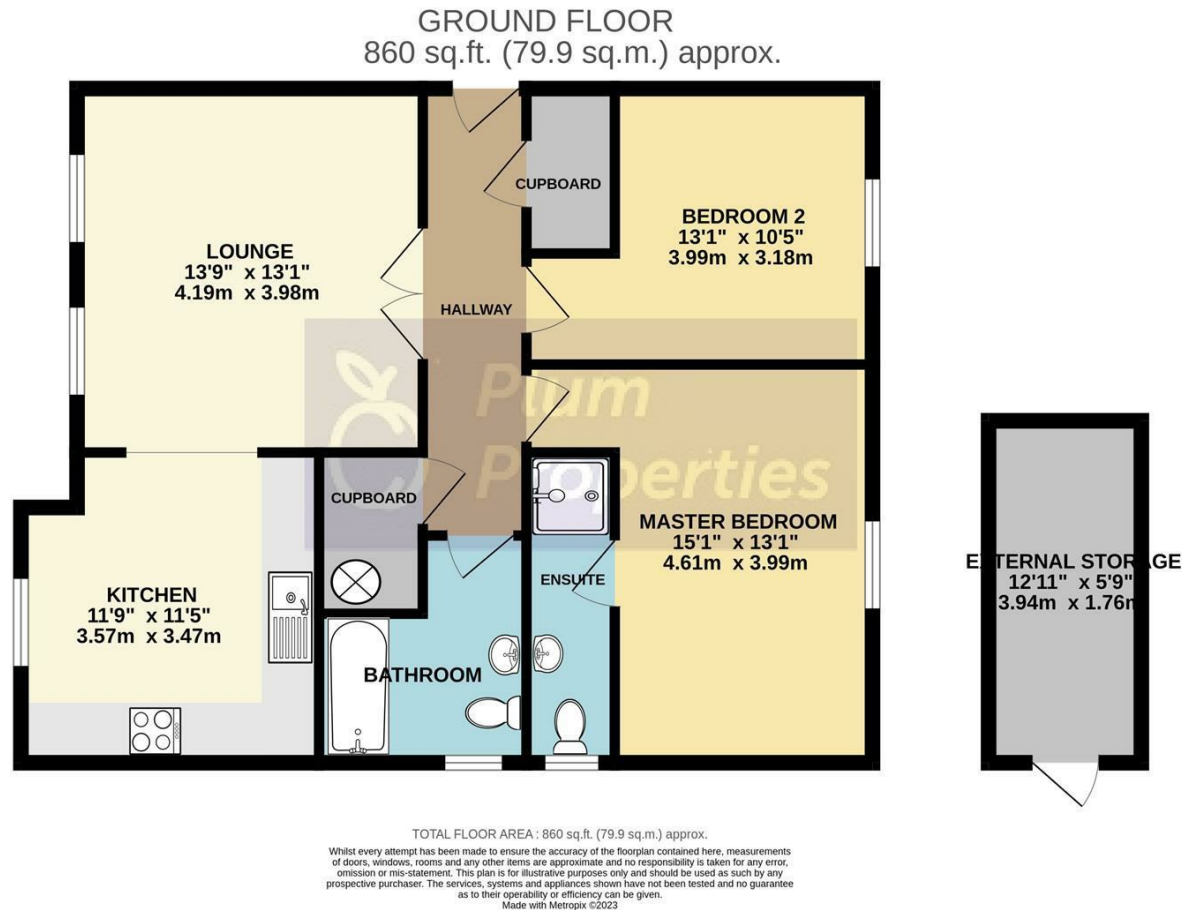
DOUGLAS, IM1 4NN

**£239,950**  
**FREEHOLD**

Luxury purpose built ground floor apartment set close to the centre of Douglas comprising lounge, kitchen, 2 bedrooms (master ensuite), bathroom, external storage area and 2 allocated parking spaces.



- Superb Purpose Built Apartment • Very Convenient Central Town Location • Ground Floor Position • 2 Double Bedrooms (1 En-Suite Shower Room) • Low Tariff Electric Heating • Wired for Satellite • uPVC Double Glazing, Allocated Private Parking for 2 Cars • Large Private Storeroom



Agents Note: Whilst every care has been taken to prepare these particulars, they are for guidance purposes only. All measurements are approximate and are for general guidance purposes only and whilst every care has been taken to ensure their accuracy, they should not be relied upon and potential buyers/tenants are advised to recheck the measurements

Head Office Sales  
64 Duke Street  
Douglas  
Isle Of Man  
IM1 2AR

