



2 PLEASINGTON VILLAS PEEL ROAD DOUGLAS, IM1 4NN

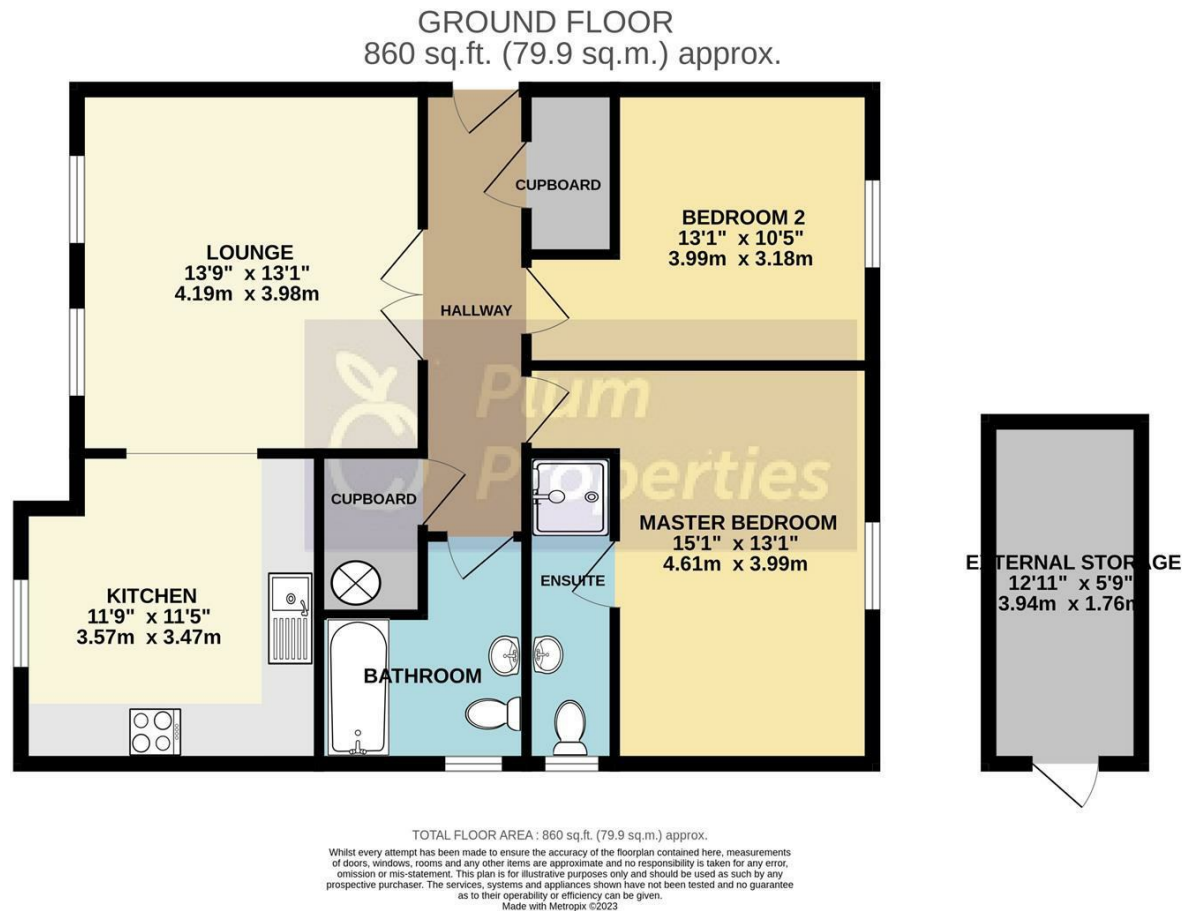
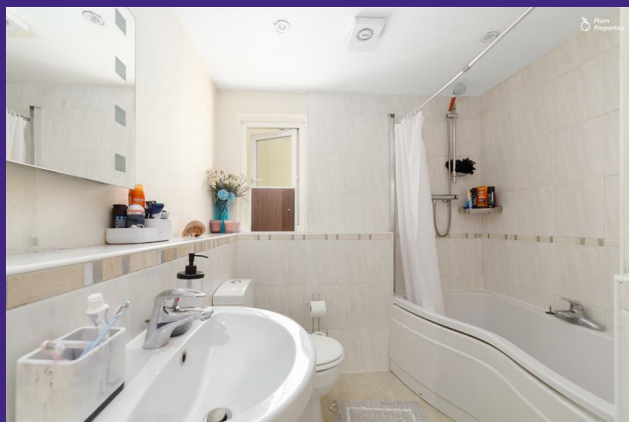
£239,950
FREEHOLD

Luxury purpose built ground floor apartment set close to the centre of Douglas comprising lounge, kitchen, 2 bedrooms (master ensuite), bathroom, external storage area and 2 allocated parking spaces.



T: 01624 820600
E: hello@plumproperties.im
W: www.plumproperties.im

- Superb Purpose Built Apartment • Very Convenient Central Town Location • Ground Floor Position • 2 Double Bedrooms (1 En-Suite Shower Room) • Low Tariff Electric Heating • Wired for Satellite • uPVC Double Glazing
- Allocated Private Parking for 2 Cars • Large Private Storeroom



Agents Note: Whilst every care has been taken to prepare these particulars, they are for guidance purposes only. All measurements are approximate and are for general guidance purposes only and whilst every care has been taken to ensure their accuracy, they should not be relied upon and potential buyers/tenants are advised to recheck the measurements

Head Office Sales
1 Athol Street
Douglas
Isle Of Man
IM1 1LD

 **Plum
Properties**

T: 01624 820600
E: hello@plumproperties.im
W: www.plumproperties.im