

3 OAK CLOSE

ONCHAN, IM3 3HR

£499,950
FREEHOLD

The location in Onchan is particularly appealing, offering a tranquil residential setting while still being within easy reach of local amenities, schools, and parks. This makes it an excellent choice for families or anyone seeking a serene lifestyle without sacrificing accessibility. This property presents a fantastic opportunity for those looking to settle in a desirable area, combining the charm of a detached home with the practicality of modern living. Whether you are a first-time buyer or looking to relocate, this house in Oak Close is certainly worth considering.



T: 01624 820600
E: hello@plumproperties.im
W: www.plumproperties.im

- Front Porch, Lounge • Modern Dining Kitchen with Bi-Fold Doors and Double French Doors to Garden • 3 Large Bedrooms (2 King Size and 1 Double) 1 Ensuite • Modern Family Bathroom • Very Well Maintained Private Rear Garden With Large lawned Area, Patio and Deck • Fabulous Summerhouse Games / Entertainment Room • Gas Fired Central Heating and uPVC Double Glazing Throughout • Garage and Parking



Overview

Situated in the charming area of Oak Close, Onchan, this delightful detached house offers a perfect blend of comfort and convenience. Built in 1982, the property boasts a well-thought-out layout, featuring three spacious bedrooms that provide ample space for relaxation and rest. The house includes a welcoming reception room, ideal for entertaining guests or enjoying quiet family evenings.

With two bathrooms, this home ensures that morning routines run smoothly, catering to the needs of both family and visitors alike. The design of the property allows for a harmonious flow between the living spaces, making it a wonderful environment for both social gatherings and peaceful retreats.

Additional Information

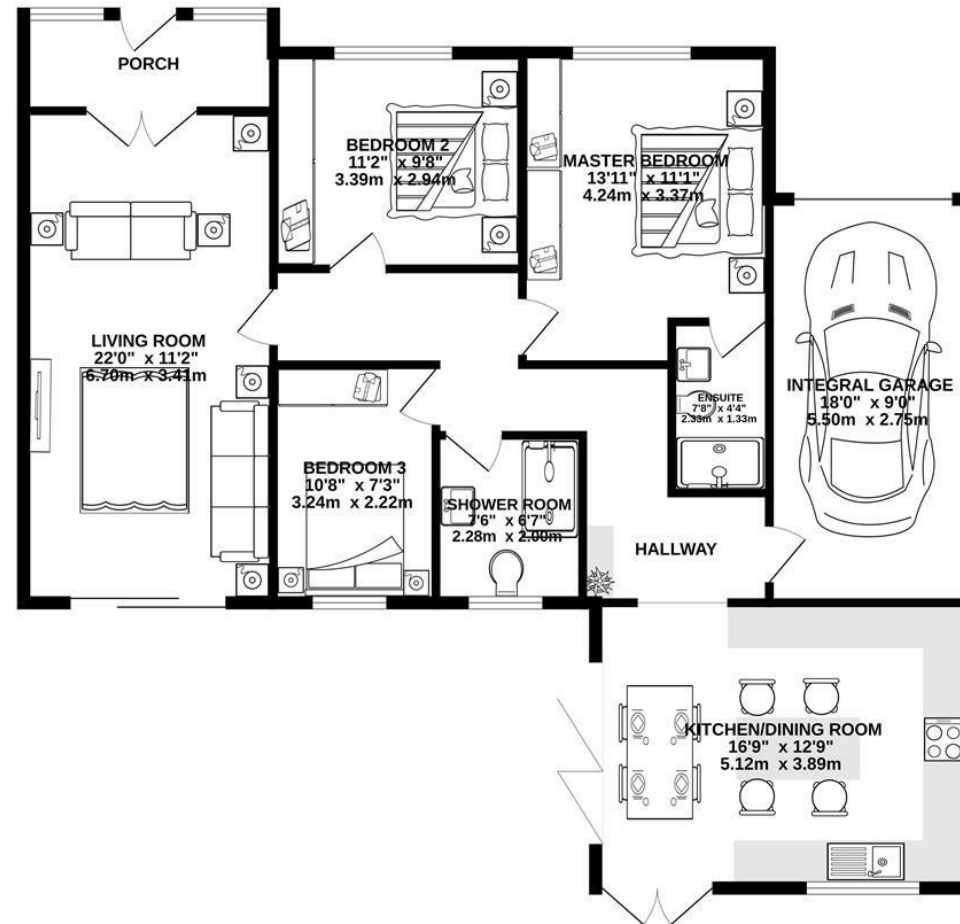
Close to Local Schools, Shops and Amenities
 Beautifully Presented Detached True Bungalow with Elevated Sea Views
 Inclusions to be advised

Directions

Travelling Through Onchan Village, Turn Right at the Traffic Lights on to Avondale Road and Continue up the Road Taking the 3rd Right After the Archibald Knox Car Park on to Birch Hill Crescent then take the 4th Right (Just before Shop) on to Maple Avenue then 2nd Right in to Oak Close where number 3 can be easily found on the Left.



GROUND FLOOR
1215 sq.ft. (112.9 sq.m.) approx.



TOTAL FLOOR AREA: 1215 sq.ft. (112.9 sq.m.) approx.

Whilst every attempt has been made to ensure the accuracy of the floorplan contained here, measurements of doors, windows, rooms and any other items are approximate and no responsibility is taken for any error, omission or mis-statement. This plan is for illustrative purposes only and should be used as such by any prospective purchaser. The services, systems and appliances shown have not been tested and no guarantee as to their operability or efficiency can be given.
Made with Metropix ©2025



Head Office Lettings
1 Athol Street
Douglas
Isle Of Man
IM1 1LD

T: 01624 820600
E: hello@plumproperties.im
W: www.plumproperties.im

Agents Note: Whilst every care has been taken to prepare these particulars, they are for guidance purposes only. All measurements are approximate and are for general guidance purposes only and whilst every care has been taken to ensure their accuracy, they should not be relied upon and potential buyers/tenants are advised to recheck the measurements