



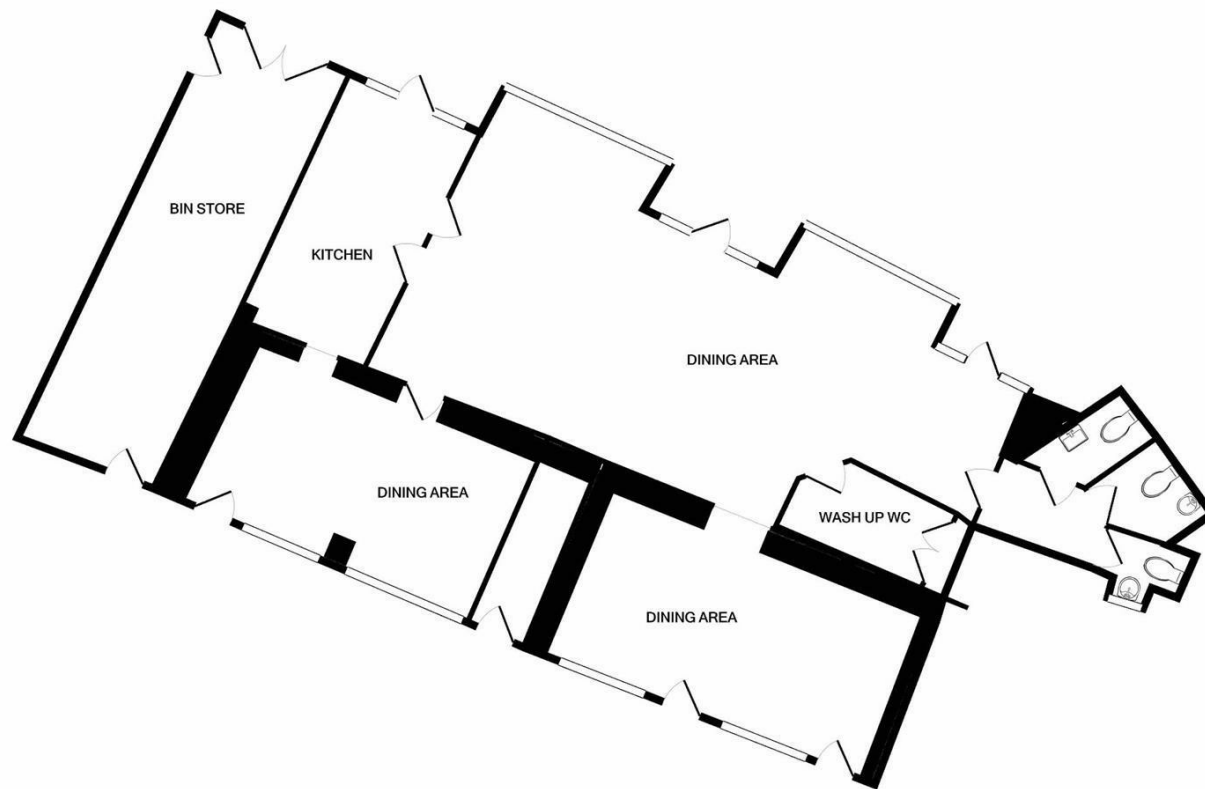
10 - 12 ARBORY STREET CASTLETOWN, IM9 1LJ

£4,065

Nestled in the heart of Castletown on Arbory Street, this commercial property presents a unique opportunity for those seeking to establish or expand their business in a vibrant and historic location. The property boasts a prime position, ensuring excellent visibility and accessibility for both locals and visitors alike.

 **Plum
Properties**

T: 01624 820600
E: hello@plumproperties.im
W: www.plumproperties.im



TOTAL APPROX. FLOOR AREA 2438 SQ.FT. (226.5 SQ.M.)
 Whilst every attempt has been made to ensure the accuracy of the floor plan contained here, measurements of doors, windows, rooms and any other items are approximate and no responsibility is taken for any error, omission, or mis-statement. This plan is for illustrative purposes only and should be used as such by any prospective purchaser. The services, systems and appliances shown have not been tested and no guarantee as to their operability or efficiency can be given
 Made with Metropix ©2021



T: 01624 820600
 E: hello@plumproperties.im
 W: www.plumproperties.im

Head Office Lettings
 1 Athol Street
 Douglas
 Isle Of Man
 IM1 1LD

01624 820600
hello@plumproperties.im
<http://www.plumproperties.im>

Agents Note: Whilst every care has been taken to prepare these particulars, they are for guidance purposes only. All measurements are approximate and are for general guidance purposes only and whilst every care has been taken to ensure their accuracy, they should not be relied upon and potential buyers/tenants are advised to recheck the measurements