



MOVILLE MAINE ROAD

PORT ERIN, IM9 6LQ

£339,000
FREEHOLD

Located in a sought-after village setting, this charming property boasts picturesque hill views, spacious living areas, and mature gardens, making it an ideal choice for first-time buyers, downsizers, or investors. Outside, the mature gardens provide a peaceful retreat, with ample space for outdoor enjoyment. Situated just a short distance from local amenities, stunning coastal walks, and excellent transport links, this home offers an exceptional lifestyle opportunity in a prime Port Erin location.



T: 01624 820600
E: hello@plumproperties.im
W: www.plumproperties.im

- Charming 2-bedroom semi-detached home in a desirable village setting
- Spacious lounge offering a bright and comfortable living space
- Well-equipped kitchen with a separate utility area for added convenience
- Family bathroom upstairs plus a handy downstairs WC
- Beautiful mature gardens, perfect for outdoor relaxation
- Scenic hill views creating a tranquil atmosphere
- Close to local shops, schools, and transport links
- Ideally located near stunning coastal walks and Port Erin's sandy beach



Overview

Nestled in the charming coastal town of Port Erin, Maine Road presents a unique opportunity for those seeking a property with character and potential. Built in 1935, this residence boasts a rich history and a timeless appeal that is sure to attract discerning buyers.

The location itself is a significant highlight. Port Erin is renowned for its stunning natural beauty, with picturesque beaches and scenic walks that are perfect for outdoor enthusiasts. The area offers a delightful blend of tranquillity and community spirit, making it an ideal place for families and individuals alike.

Additional Information

- Rates Payable £1,120 Per Annum

_ School District: Rushen Junior School, Port Erin, Castle Rushen High School, Castletown

_ Inclusions : TBC

Directions

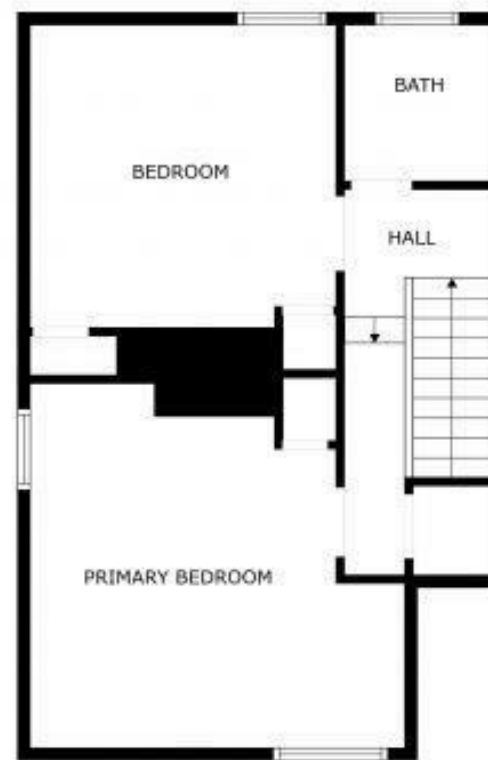
Travelling through Port Erin Four Roads roundabout, Upon entering Port Erin village turning right onto Bridson Street until stop sign.

At junction continue ahead, turn right onto Maine road where Moville will be found on the left hand side clearly names and identifiable by our For Sale Board.





FLOOR 1



FLOOR 2



T: 01624 820600
E: hello@plumproperties.im
W: www.plumproperties.im

Head Office Lettings
1 Athol Street
Douglas
Isle Of Man
IM1 1LD

Agents Note: Whilst every care has been taken to prepare these particulars, they are for guidance purposes only. All measurements are approximate and are for general guidance purposes only and whilst every care has been taken to ensure their accuracy, they should not be relied upon and potential buyers/tenants are advised to recheck the measurements