



BULRHENNY COTTAGE RICHMOND HILL DOUGLAS, IM4 1JH

£1,750 PER MONTH

Delightful semi-rural country cottage, located within the grounds of the Home of Rest for Old Horses, conveniently within reach of the centre of Douglas within ten minutes.

Available immediately on an unfurnished basis, this three bed detached cottage offers a flexible layout, with off-road parking and stunning countryside views.

The landlord will consider applicants with a pet.



T: 01624 820600
E: hello@plumproperties.im
W: www.plumproperties.im

- Available immediately on an unfurnished basis
- Semi Rural Detached Cottage, yet conveniently close to Central Douglas
- Landlord will consider applicants with a well behaved pet
- Three well proportioned Bedrooms
- Two Sitting Rooms
- Dining Hall
- Well equipped Kitchen with Utility off
- Family Bathroom
- Off-Road Parking
- Low Maintenance Grounds



Overview

Tucked away in the picturesque countryside just south of Douglas, Bulrhenny Cottage offers a charming retreat while remaining conveniently close to the city centre, only a ten-minute drive away. This delightful detached period cottage is set within the serene grounds of the Home of Rest for Old Horses, providing a unique and tranquil living environment.

Upon entering the property, you are welcomed by a convenient porch that leads into an inviting open dining hall, complete with a staircase that ascends to the upper floor. The cottage features two generously sized reception rooms, offering flexibility for your living arrangements. One room, a cosy sitting area with a feature fireplace, exudes warmth and character, while the other is a bright lounge with dual aspects and its own external door, providing the option of being utilised as an additional bedroom.

At the rear of the cottage, you will find a charming country-style kitchen equipped with an electric oven, hob, and an under-counter dishwasher. Adjacent to the kitchen is a practical utility room that houses the boiler and provides plumbing for a washing machine, ensuring convenience in daily living.

The upper floor comprises three well-proportioned bedrooms, each benefiting from delightful rural views that enhance the peaceful atmosphere of the home.

Completing the accommodation is a modern family bathroom, featuring a bath with a shower over, a vanity wash basin, and a WC.

Externally, Bulrhenny Cottage boasts a low-maintenance front garden and a parking space, with additional overflow parking available in the nearby car park. The landlord is also open to considering applicants with pets, making this property an ideal choice for families or those seeking a serene lifestyle in a beautiful setting.

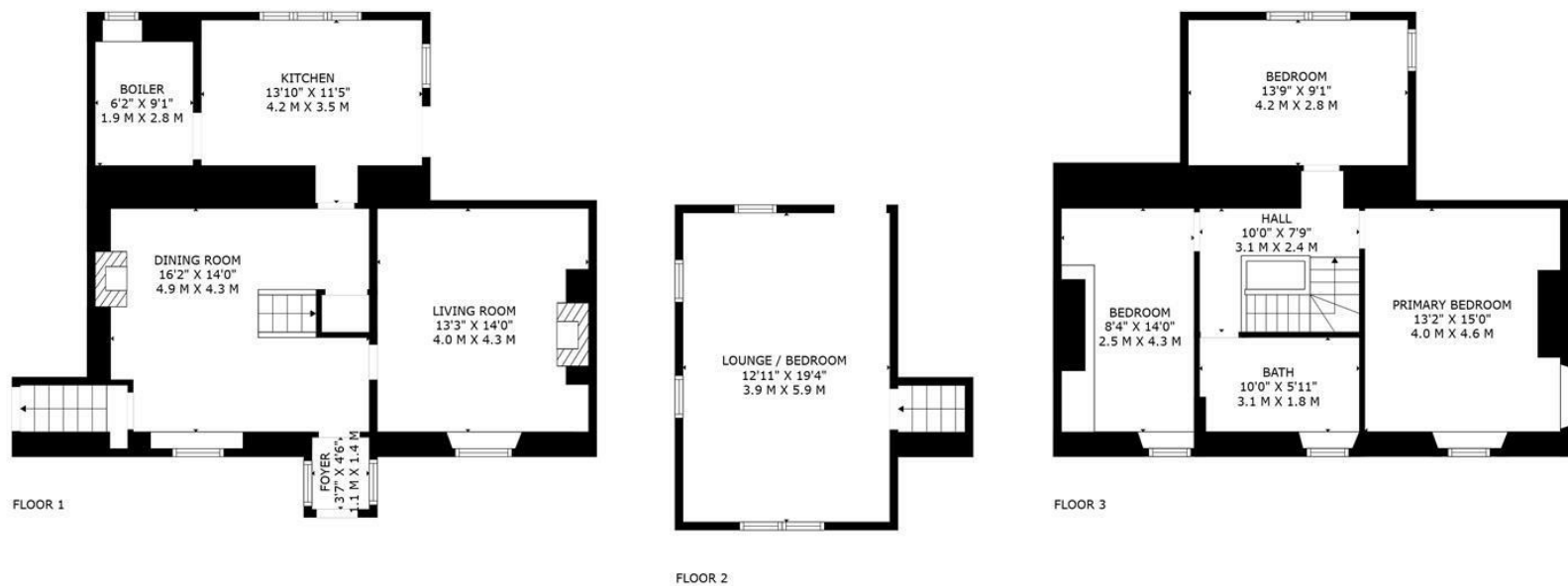
Additional Information

- Pets considered at the Discretion of the Landlord
- Oil Fired Central Heating
- Double Glazed
- Available Immediately
- Off-Road Parking

Directions

From the Quarterbridge roundabout in Douglas travel in a southerly direction along New Castletown until reaching the Cooil Road roundabout. Take the second exit continuing south for approximately half a mile until reaching the base of Richmond Hill, taking a right turn into the Home of Rest for old Horses. Pause at the electric gates until fully open and proceed to the top of the car park. Continue up the hill on foot and past the stables where a member of the Plum Properties team will meet you at Bulrhenny House.





TOTAL: 1601 sq. ft, 149 m2
 FLOOR 1: 668 sq. ft, 62 m2, FLOOR 2: 269 sq. ft, 25 m2, FLOOR 3: 664 sq. ft, 62 m2
 EXCLUDED AREAS: BOILER : 70 sq. ft, 7 m2

FLOOR PLAN CREATED BY INVISION MEDIA & MARKETING. MEASUREMENTS DEEMED HIGHLY RELIABLE BUT NOT GUARANTEED.



T: 01624 820600
 E: hello@plumproperties.im
 W: www.plumproperties.im

Head Office Sales
 1 Athol Street
 Douglas
 Isle Of Man
 IM1 1LD

Agents Note: Whilst every care has been taken to prepare these particulars, they are for guidance purposes only. All measurements are approximate and are for general guidance purposes only and whilst every care has been taken to ensure their accuracy, they should not be relied upon and potential buyers/tenants are advised to recheck the measurements