

## APARTMENT 5 8 BELMONT TERRACE

DOUGLAS, IM1 4NJ

£135,000  
FREEHOLD

Whether you are looking to invest or find a new home, this flat in Belmont Terrace presents a wonderful opportunity. Embrace the charm of Douglas and make this flat your own.

 **Plum  
Properties**

T: 01624 820600  
E: [hello@plumproperties.im](mailto:hello@plumproperties.im)  
W: [www.plumproperties.im](http://www.plumproperties.im)

• Beautifully Presented 2nd Floor  
Apartment • Spacious Lounge with Lovely  
Elevated Views • Modern Open Plan  
Kitchen • Light and Airy Double Bedroom • 3  
Piece Bathroom with P shaped Bath and Shower  
Above • Two Megaflo Hot Water  
Cylinders • Well Maintained Communal  
Areas • Up to Date Fire Regulations



### Overview

Located in the charming area of Belmont Terrace, Douglas, this delightful flat offers a perfect blend of comfort and convenience. With one well-proportioned reception room, this space is ideal for relaxation or entertaining guests. The flat features a cosy bedroom, providing a peaceful retreat at the end of the day. The bathroom is thoughtfully designed, ensuring all your needs are met. This property is perfect for individuals or couples seeking a low-maintenance lifestyle in a vibrant community. The location is advantageous, with easy access to local amenities, shops, and transport links, making it an excellent choice for those who appreciate both tranquillity and accessibility.

### Additional Information

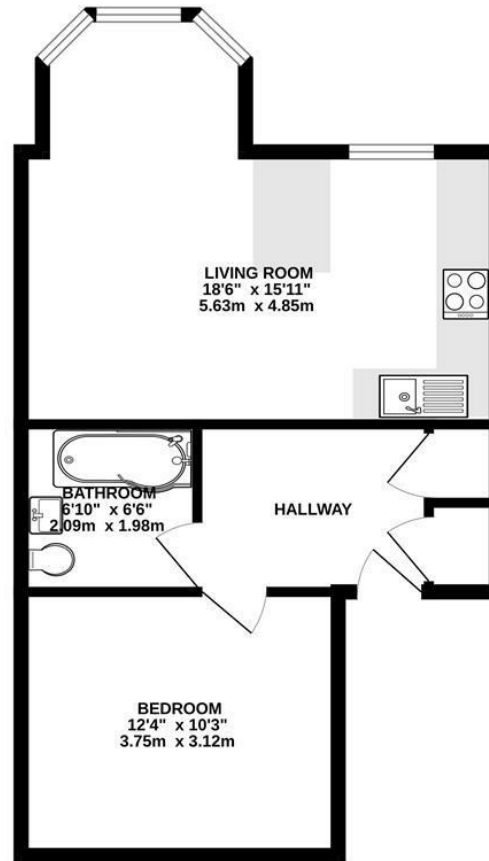
#### Directions

The Property is located on the fringe of Douglas city centre allowing a short walk to Circular Road, Athol Street and surrounding areas.





GROUND FLOOR  
481 sq.ft. (44.7 sq.m.) approx.



TOTAL FLOOR AREA: 481 sq.ft. (44.7 sq.m.) approx.

Whilst every attempt has been made to ensure the accuracy of the floorplan contained here, measurements of doors, windows, rooms and any other items are approximate and no responsibility is taken for any error, omission or mis-statement. This plan is for illustrative purposes only and should be used as such by any prospective purchaser. The services, systems and appliances shown have not been tested and no guarantee as to their operability or efficiency can be given.  
Made with Metropix ©2025



T: 01624 820600  
E: [hello@plumproperties.im](mailto:hello@plumproperties.im)  
W: [www.plumproperties.im](http://www.plumproperties.im)

Head Office Lettings  
1 Athol Street  
Douglas  
Isle Of Man  
IM1 1LD

Agents Note: Whilst every care has been taken to prepare these particulars, they are for guidance purposes only. All measurements are approximate and are for general guidance purposes only and whilst every care has been taken to ensure their accuracy, they should not be relied upon and potential buyers/tenants are advised to recheck the measurements