



GLENMORE BELMONT HILL

DOUGLAS, IM1 4NX

£615,000
FREEHOLD

This detached house is not just a property; it is a place where memories can be made and cherished for years to come. If you are seeking a family home in a desirable location, this residence on Belmont Hill is certainly worth considering.



T: 01624 820600
E: hello@plumproperties.im
W: www.plumproperties.im

• Stunning Detached Character Dormer Cottage Style Property • Deceptively Spacious and Beautifully Presented Throughout • Lovely Reception Hallway / Foyer • Well Appointed Large Lounge, Dining Room • Modern Fitted Breakfast Kitchen • Family Room / Snug / Bedroom 4 • Utility Room • Master Bedroom with Dressing Room and Ensuite Shower Room • 2 Further Bedrooms, Modern Bathroom and Shower Room Cloakroom (downstairs) • Large Private Rear Garden, Garage and Parking for Several Cars



Overview

Located in the charming area of Belmont Hill in Douglas, Isle of Man, this splendid detached house offers a perfect blend of comfort and elegance. With four spacious bedrooms, this property is ideal for families seeking a serene yet convenient lifestyle.

As you enter, you are greeted by a welcoming atmosphere that flows throughout the home. The generous living spaces are designed to accommodate both relaxation and entertaining, making it a wonderful setting for gatherings with family and friends. The well-appointed kitchen provides ample space for culinary adventures, while the adjoining dining area invites delightful meals and cherished moments.

The four bedrooms are thoughtfully designed, providing a peaceful retreat for each family member. Natural light floods the rooms, creating a warm and inviting ambiance. The property also boasts well-maintained gardens, offering a tranquil outdoor space for children to play or for adults to unwind after a long day.

Additional Information

Rateable Value: For latest rateable value please contact the Rates Office on 685661

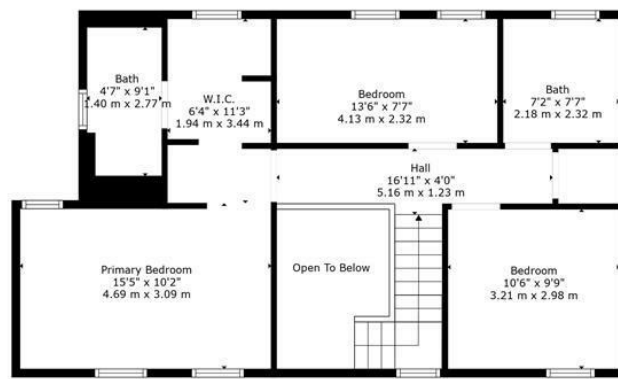
Inclusions : TBC

School District: Ballakermeen High School

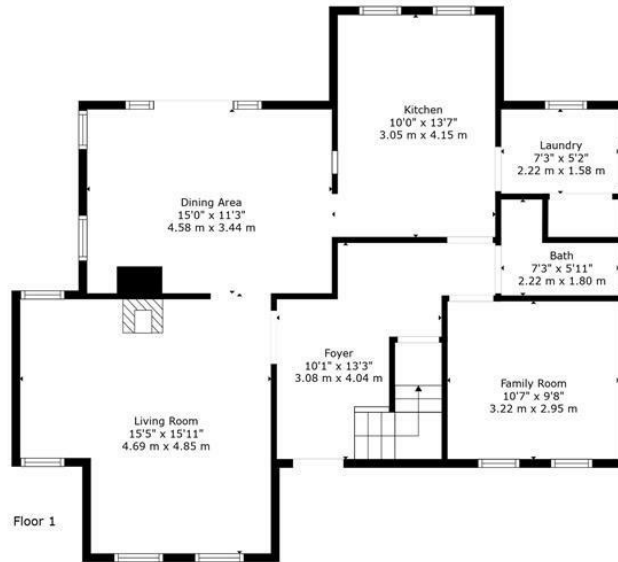
Location

Nestled in a quiet secluded location close to Douglas city centre and amenities, ideally located close to Ballakermeen high school. The property can be found at the top of Belmont Hill immediately after Eaglehurst Manor. The property and the delightful gardens are a real treat for this conveniently positioned dwelling.





Floor 2



Floor 1

TOTAL: 1386 sq. ft, 129 m2
 FLOOR 1: 860 sq. ft, 80 m2, FLOOR 2: 526 sq. ft, 49 m2
 EXCLUDED AREAS: LOW CEILING: 154 sq. ft, 15 m2, OPEN TO BELOW: 61 sq. ft, 6 m2

Floor Plan Created By Invision Media & Marketing. Measurements Deemed Highly Reliable But Not Guaranteed.



T: 01624 820600
 E: hello@plumproperties.im
 W: www.plumproperties.im

Head Office Sales
 1 Athol Street
 Douglas
 Isle Of Man
 IM1 1LD

Agents Note: Whilst every care has been taken to prepare these particulars, they are for guidance purposes only. All measurements are approximate and are for general guidance purposes only and whilst every care has been taken to ensure their accuracy, they should not be relied upon and potential buyers/tenants are advised to recheck the measurements