



## 2 GRENEA COTTAGES SHORE ROAD PORT ST MARY, IM9 5NB

**£825,000**  
**FREEHOLD**

The unique location of this home allows for easy access to the beautiful coastline, where you can enjoy leisurely walks along the shore or partake in various water activities. The charm of Port St. Mary, with its local amenities and friendly community, adds to the appeal of this exceptional property.

In summary, this waterfront house on Shore Road is a rare find, combining spacious living with stunning views and a prime location. It is an ideal choice for families or anyone looking to embrace a coastal lifestyle in the heart of Kentraugh. Do not miss the opportunity to make this remarkable property your new home. No onward chain



T: 01624 820600  
E: [hello@plumproperties.im](mailto:hello@plumproperties.im)  
W: [www.plumproperties.im](http://www.plumproperties.im)

- Luxurious Detached Waterfront Property • Coastal Location Situated In The South of The Island • Spacious Open Plan Lounge/Diner with Stunning Sea Views • Open Plan Kitchen/Diner/Family Area With Rural / Hill Views At The Rear • 4 Spacious Double Bedrooms • 3 Bathrooms And A Sauna With A Shower Room • Beautifully Crafted Wood Panelled Bar • 2 Balconies And 2 Sun Terraces • Large Beachfront Garden, Complete With Cabin & BBQ Area • Idyllic Retreat That Perfectly Encapsulates life by the Sea



## Overview

Nestled along the picturesque Shore Road in Kentraugh, Port St. Mary, this unique detached waterfront house offers an exceptional living experience. With its stunning views and tranquil surroundings, this property is perfect for those seeking a serene lifestyle by the sea.

The house boasts three spacious reception rooms, providing ample space for both relaxation and entertaining. Each room is designed to maximise natural light, creating a warm and inviting atmosphere throughout the home. The layout is ideal for family gatherings or hosting friends, ensuring that every occasion is memorable.

## Additional Information

Viewing Highly Recommended. \*\*\*\*NO ONWARD CHAIN\*\*\*\*

For Rates Payable contact The Isle of Man Treasury  
01624 658661

School District: Scoill Phurt le Moirrey, Port St Mary, Castle Rushen High School, Castletown, King Williams College, Castletown

## Directions

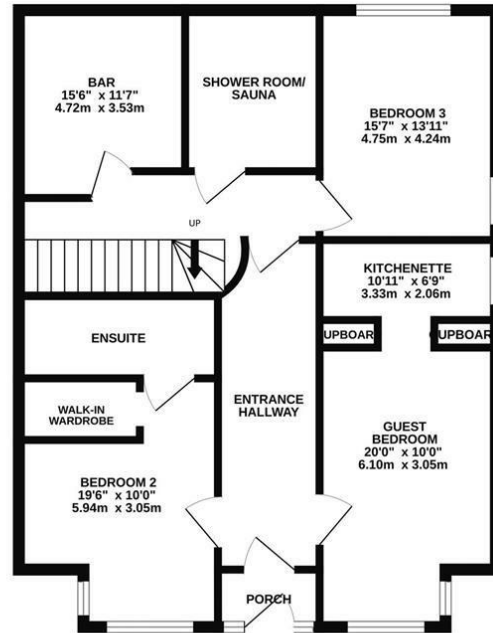
Travelling out of Port Erin continue straight through at the Four Roads roundabout, turning left at the give way onto the A5 Coast Road, continue past the Shore

Hotel and then proceed for a short distance where 2 Grenea Cottages can be located on the left hand side.

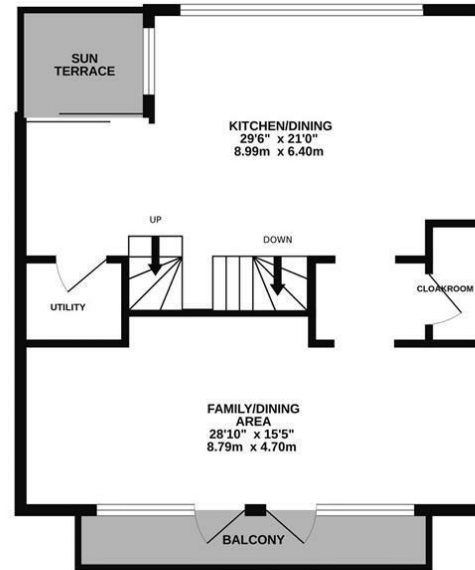




GROUND FLOOR



1ST FLOOR



2ND FLOOR



Whilst every attempt has been made to ensure the accuracy of the floorplan contained here, measurements of doors, windows, rooms and any other items are approximate and no responsibility is taken for any error, omission or mis-statement. This plan is for illustrative purposes only and should be used as such by any prospective purchaser. The services, systems and appliances shown have not been tested and no guarantee as to their operability or efficiency can be given.  
Made with Metropix ©2024