



17 HEATHER LANE, ABBEYFIELDS

DOUGLAS, IM2 7EF

£299,950
FREEHOLD

Suitable for investors and first time buyers. Well positioned semi-detached house. Situated in a quiet cul de sac residential location. Close to shops, schools and local amenities.

 **Plum
Properties**

T: 01624 820600
E: hello@plumproperties.im
W: www.plumproperties.im

• Large Lounge • Dining Kitchen • 3
Bedrooms • Family Bathroom • Gas Fired
Central Heating • uPVC Double Glazing • Good
Sized Sunny Rear Garden • Parking for 2
Cars • Viewings Highly Recommended



Overview

Nestled in the charming area of Abbeyfields, Douglas, this delightful terraced house on Heather Lane offers a perfect blend of comfort and convenience. With three well-proportioned bedrooms, this property is ideal for families or those seeking extra space. The inviting reception room provides a warm and welcoming atmosphere, perfect for relaxation or entertaining guests.

The house features a well-appointed bathroom, ensuring that all your daily needs are met with ease. Although the property does not boast extensive square footage, its thoughtful layout maximises the available space, creating a cosy yet functional home.

Additional Information

Viewings Highly Recommended

Rateable Value: For latest rateable value please contact the Rates Office on 685661

Inclusions : TBC

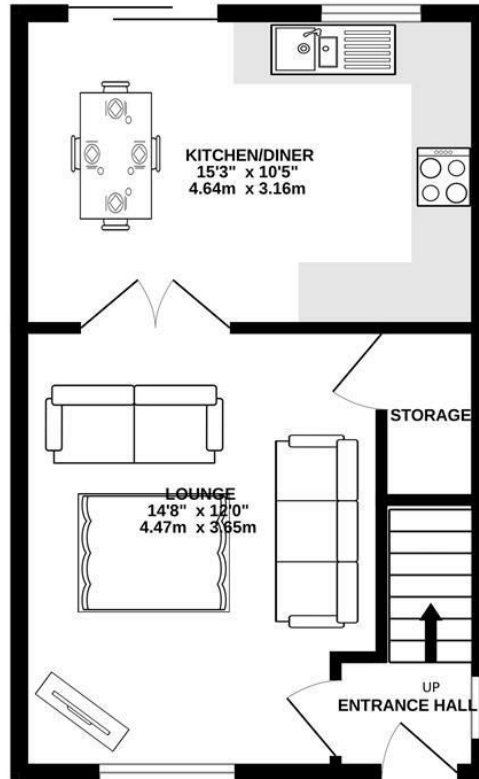
School District: Ramsey Primary School and Ramsey Grammar School

Directions

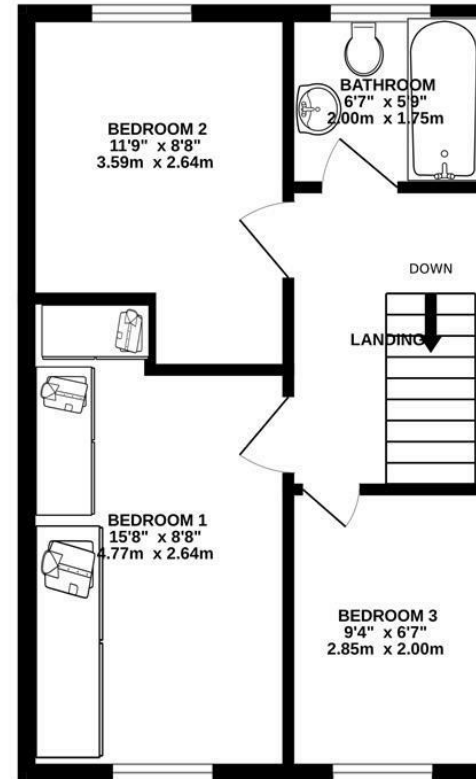
Travelling North up Johnny Wattersons Lane, Take the Last Turning on the Right in to Campion Way then Third Left in to Heather Lane Where the Property Can be Located at the Top on the Right Hand Side



GROUND FLOOR
381 sq.ft. (35.4 sq.m.) approx.



1ST FLOOR
381 sq.ft. (35.4 sq.m.) approx.



TOTAL FLOOR AREA : 763 sq.ft. (70.9 sq.m.) approx.

Whilst every attempt has been made to ensure the accuracy of the floorplan contained here, measurements of doors, windows, rooms and any other items are approximate and no responsibility is taken for any error, omission or mis-statement. This plan is for illustrative purposes only and should be used as such by any prospective purchaser. The services, systems and appliances shown have not been tested and no guarantee as to their operability or efficiency can be given.

Made with Metropix ©2025



Head Office Lettings
1 Athol Street
Douglas
Isle Of Man
IM1 1LD

T: 01624 820600
E: hello@plumproperties.im
W: www.plumproperties.im

Agents Note: Whilst every care has been taken to prepare these particulars, they are for guidance purposes only. All measurements are approximate and are for general guidance purposes only and whilst every care has been taken to ensure their accuracy, they should not be relied upon and potential buyers/tenants are advised to recheck the measurements